

IGI GEMOLOGICAL REPORT

IGI LABORATORY GROWN DIAMOND GRADING REPORT

November 14, 2019

IGI Report Number

LG389908279

Shape and Cutting Style

ROUND BRILLIANT

Measurements

6.50 - 6.53 X 4.01 MM

GRADING RESULTS

Carat Weight

1.06 Carat

Color Grade

F

Clarity Grade

VS 1

Cut Grade

EXCELLENT

ADDITIONAL GRADING INFORMATION

Polish

EXCELLENT

Symmetry

EXCELLENT

Fluorescence

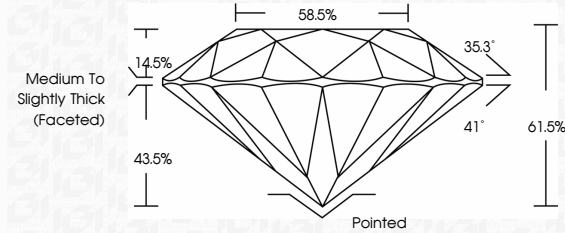
NONE

Inscription(s)

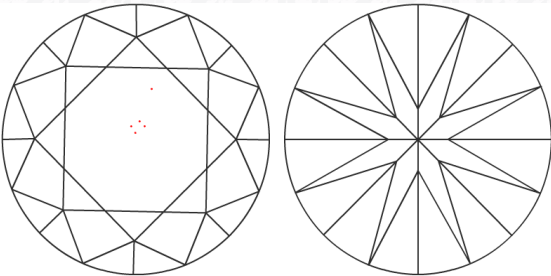
LABGROWN IGI LG389908279

ADDITIONAL INFORMATION

PROPORTIONS



CLARITY CHARACTERISTICS



KEY TO SYMBOLS

Red symbols indicate internal characteristics.  
Green symbols indicate external characteristics.

SCIENTIFIC LABORATORY FOR THE IDENTIFICATION AND GRADING  
OF DIAMONDS AND COLORED STONES

EDUCATIONAL PROGRAMS

GRADING SCALES

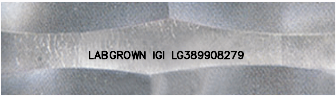
COLOR GRADING SCALE	CL COLORLESS D - F	NC NEAR COLORLESS G - J	FT FAINT K - M	VLT VERY LIGHT N - R	LT LIGHT S - Z	
CLARITY (10x) GRADING SCALE	FL FLAWLESS INTERNALLY FLAWLESS	IF FLAWLESS INTERNALLY FLAWLESS	VVS VERY VERY SLIGHTLY INCLUDED	VS VERY SLIGHTLY INCLUDED	SI SLIGHTLY INCLUDED	I INCLUDED

The Laboratory Grown Diamond (LGD) described in this Report has been analyzed, graded, and LaserScribed® by International Gemological Institute (IGI). A LGD has essentially the same chemical, physical and optical properties as a mined diamond, with the exception of being man-made (a manufactured product). LGD's are typically produced by CVD (chemical vapor deposition) or by HPHT (high pressure high temperature) growth processes and may include post-growth modifications to change the color. IGI utilizes the most advanced techniques and equipment currently available including binocular microscopes, diamond color masters, non-contact optical measuring devices, a wide range of analytical techniques including FTIR, UV-VIS-NIR, raman spectroscopy, and fluorescence analysis at various excitation wavelengths. This Report includes advanced security features. This Report is neither a guarantee, valuation nor appraisal and by making this report IGI does not agree to purchase or replace the article.  
FOR TERMS AND CONDITIONS PLEASE VISIT [WWW.IGI.ORG](http://WWW.IGI.ORG)

© INTERNATIONAL GEMOLOGICAL INSTITUTE, INC.



PHOTO ENLARGED



LASERSCRIBE SM

The gemstone described in this Identification Report ("Report") has been identified, authenticated, graded, tested, analyzed, examined and/or inscribed by International Gemological Institute ("IGI"). IGI employs and utilizes those techniques and equipment currently available to IGI, including, without limitation, 10X magnification, corrected triplet loupe, stereo zoom binocular microscope, refractometer, spectrometer, polariscope, non-contact optical measuring device, and such other instruments and/or processes as deemed appropriate by IGI. This Report includes advanced security features. A duly accredited gemologist or jeweler can advise you with respect to the importance of and interrelationship between cut, color, clarity and carat weight.  
**THIS REPORT IS NEITHER A GUARANTEE, VALUATION, NOR APPRAISAL OF THE GEMSTONE DESCRIBED HEREIN. PLEASE REVIEW THE LIMITATIONS AND RESTRICTIONS SET FORTH ONLINE. FOR ADDITIONAL INFORMATION, IMPORTANT LIMITATIONS AND DISCLAIMERS, PLEASE GO TO [WWW.IGIONLINE.COM](http://WWW.IGIONLINE.COM) OR CALL 1-888-BUY-IGI'S.**

©2016 IGI



igireport