



**INTERNATIONAL  
GEMOLOGICAL  
INSTITUTE**

**ELECTRONIC COPY**

**LABORATORY GROWN DIAMOND REPORT**

**IGI GEMOLOGICAL REPORT**

**LG407927509**

**ADDITIONAL INFORMATION**

**IGI LABORATORY GROWN  
DIAMOND ID REPORT**

IGI Report Number **LG407927509**  
 Carat Weight **0.56 Carat**  
 Color Grade **E**  
 Clarity Grade **VS 2**  
 Cut Grade **IDEAL**  
 Polish **EXCELLENT**  
 Symmetry **EXCELLENT**  
 Fluorescence **NONE**  
 Inscription(s) **LABGROWN IGI  
LG407927509**

**IGI LABORATORY GROWN  
DIAMOND ID REPORT**

IGI Report Number **LG407927509**  
 Carat Weight **0.56 Carat**  
 Color Grade **E**  
 Clarity Grade **VS 2**  
 Cut Grade **IDEAL**  
 Polish **EXCELLENT**  
 Symmetry **EXCELLENT**  
 Fluorescence **NONE**  
 Inscription(s) **LABGROWN IGI  
LG407927509**

**IGI LABORATORY GROWN DIAMOND GRADING REPORT**

Report Date **May 4, 2020**  
 IGI Report Number **LG407927509**  
 Shape and Cutting Style **ROUND BRILLIANT**  
 Measurements **5.35 - 5.37 X 3.23 MM**

**GRADING RESULTS**

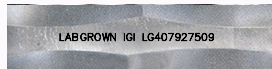
Carat Weight **0.56 Carat**  
 Color Grade **E**  
 Clarity Grade **VS 2**  
 Cut Grade **IDEAL**

**ADDITIONAL GRADING INFORMATION**

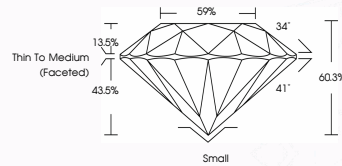
Polish **EXCELLENT**  
 Symmetry **EXCELLENT**  
 Fluorescence **NONE**  
 Inscription(s) **LABGROWN IGI LG407927509**



PHOTO ENLARGED



LASERSCRIBE<sup>SM</sup>



The Laboratory Grown Diamond (LGD) described in this Report has been analyzed, graded, and LaserScribed® by International Gemological Institute (IGI). A LGD has essentially the same chemical, physical and optical properties as a mined diamond, with the exception of being man-made (a manufactured product). LGD's are typically produced by CVD (chemical vapor deposition) or by HPHT (high pressure high temperature) growth processes and may include post-growth modifications to change the color. IGI utilizes the most advanced techniques and equipment currently available including binocular microscopes, diamond color masters, non-contact-optical measuring devices, a wide range of analytical techniques including FTIR, UV-VIS-NIR, raman spectroscopy, and fluorescence analysis at various excitation wavelengths. This Report includes advanced security features. This Report is neither a guarantee, valuation nor appraisal and by making this report IGI does not agree to purchase or replace the article.  
 FOR TERMS AND CONDITIONS PLEASE VISIT WWW.IGI.ORG © INTERNATIONAL GEMOLOGICAL INSTITUTE, INC.

For Terms & Conditions, please visit [www.igi.org](http://www.igi.org)



THIS DOCUMENT WAS PRODUCED WITH THE FOLLOWING SECURITY MEASURES: SPECIAL DOCUMENT PAPER, INK SCREENS, WATERMARK, BACKGROUND DESIGN, HOLOGRAM AND OTHER SECURITY FEATURES NOT LISTED AND DO EXCEED DOCUMENT SECURITY INDUSTRY GUIDELINES.