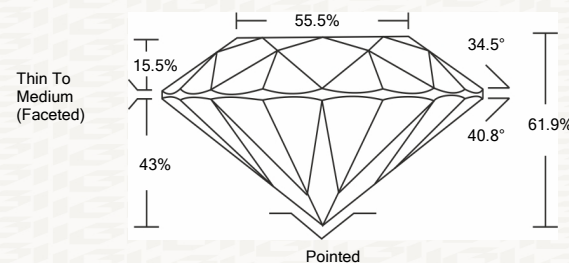




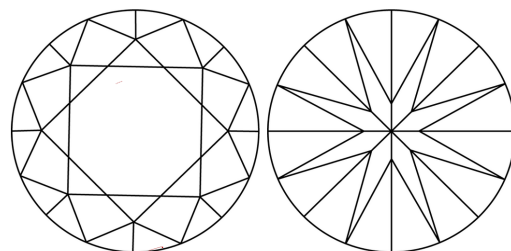
IGI GEMOLOGICAL REPORT

ADDITIONAL INFORMATION

PROPORTIONS



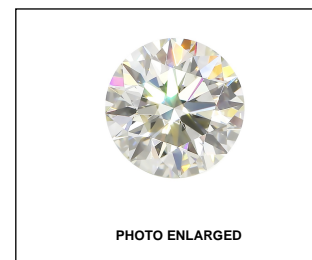
CLARITY CHARACTERISTICS



GRADING SCALES

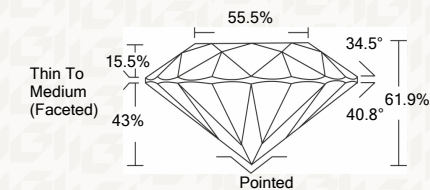
Table showing grading scales for Color (CL), Clarity (CLARITY 10x), and other categories.

The laboratory grown diamond described in this Report (Report) has been graded, tested, analyzed, examined and/or inscribed by International Gemological Institute (I.G.I.).



IGI LABORATORY GROWN DIAMOND GRADING REPORT

02/10/2020 IGI Report Number LG407961728 Shape and Cutting Style ROUND BRILLIANT Measurements 6.47 - 6.49 X 4.01 MM GRADING RESULTS Carat Weight 1.02 CARAT Color Grade F Clarity Grade VS 1 Cut Grade IDEAL



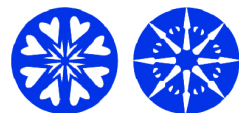
ADDITIONAL GRADING INFORMATION

Polish EXCELLENT Symmetry EXCELLENT Fluorescence NONE Inscription(s) LABGROWN IGI LG407961728

Comments: HEARTS & ARROWS This Laboratory grown diamond was created by chemical vapor deposition process (CVD) Type IIa

KEY TO SYMBOLS

Red symbols indicate internal characteristics. Green symbols indicate external characteristics.



This Report is subject to the terms and conditions

© IGI 2000, edition 2019 all rights reserved.



THE DOCUMENT WAS PRODUCED THE FOLLOWING SECURITY MEASURES: SPECIAL DOCUMENT PAPER, INK SCREENS, WATERMARK, BACKGROUND DESIGN, HOLOGRAM AND OTHER SECURITY FEATURES NOT LISTED AND DO EXCEED DOCUMENT SECURITY INDUSTRY DUDLINES



IGI

02/10/2020 IGI Report No LG407961728 ROUND BRILLIANT 6.47 - 6.49 X 4.01 MM Carat Weight 1.02 CARAT Color Grade F Clarity Grade VS 1 Cut Grade IDEAL Depth 61.9% Table 55.5% Girdle Thin To Medium (Faceted) Culet Pointed Polish EXCELLENT Symmetry EXCELLENT Fluorescence NONE Inscription(s) LABGROWN IGI LG407961728 Comments: HEARTS & ARROWS This Laboratory grown diamond was created by chemical vapor deposition process (CVD) Type IIa