



IGI GEMOLOGICAL REPORT

IGI LABORATORY GROWN DIAMOND GRADING REPORT

02/10/2020

IGI Report Number LG407961736

Shape and Cutting Style ROUND BRILLIANT

Measurements 6.76 - 6.78 X 4.07 MM

GRADING RESULTS

Carat Weight 1.12 CARAT

Color Grade F

Clarity Grade VVS 2

Cut Grade IDEAL

ADDITIONAL GRADING INFORMATION

Polish EXCELLENT

Symmetry EXCELLENT

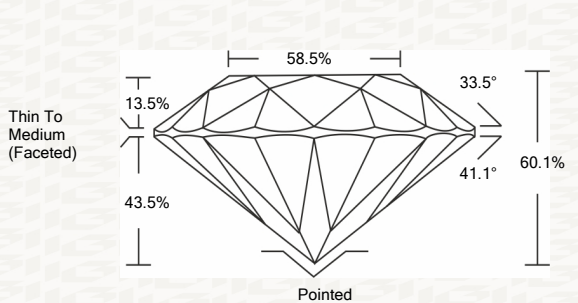
Fluorescence NONE

Inscription(s) LABGROWN IGI LG407961736

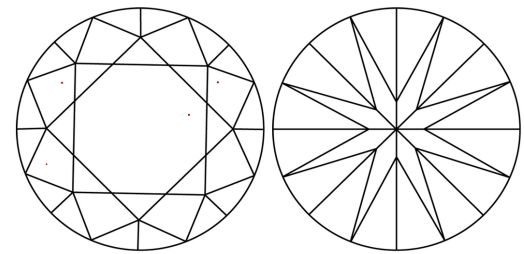
Comments: HEARTS & ARROWS This Laboratory grown diamond was created by chemical vapor deposition process (CVD) Type IIa

ADDITIONAL INFORMATION

PROPORTIONS

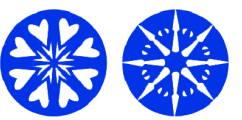


CLARITY CHARACTERISTICS



KEY TO SYMBOLS

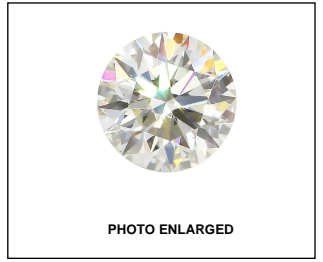
Red symbols indicate internal characteristics. Green symbols indicate external characteristics.



This Report is subject to the terms and conditions © IGI 2000, edition 2019 all rights reserved.

Table with 2 rows and 5 columns: COLOR GRADING SCALE (CL, NC, FT, VLT, LT) and CLARITY (10x) GRADING SCALE (FL, IF, VVS, VS, SI, I)

The laboratory grown diamond described in this Report (Report) has been graded, tested, analyzed, examined and/or inscribed by International Gemological Institute (IGI). A laboratory grown diamond is one that has essentially the same chemical, physical and optical properties as a mined diamond...



IGI LABORATORY GROWN DIAMOND GRADING REPORT

02/10/2020

IGI Report Number LG407961736

Shape and Cutting Style ROUND BRILLIANT

Measurements 6.76 - 6.78 X 4.07 MM

GRADING RESULTS

Carat Weight 1.12 CARAT

Color Grade F

Clarity Grade VVS 2

Cut Grade IDEAL

ADDITIONAL GRADING INFORMATION

Polish EXCELLENT

Symmetry EXCELLENT

Fluorescence NONE

Inscription(s) LABGROWN IGI LG407961736

Comments: HEARTS & ARROWS This Laboratory grown diamond was created by chemical vapor deposition process (CVD) Type IIa

Comments: HEARTS & ARROWS This Laboratory grown diamond was created by chemical vapor deposition process (CVD) Type IIa



IGI

Summary of report details including IGI Report No, Round Brilliant, 6.76 - 6.78 X 4.07 MM, 1.12 CARAT, F, VVS 2, IDEAL, 60.1%, 58.5%, Thin To Medium (Faceted), Pointed, EXCELLENT, EXCELLENT, NONE, LABGROWN IGI LG407961736, and Hearts & Arrows logo.