



IGI GEMOLOGICAL REPORT

IGI LABORATORY GROWN DIAMOND GRADING REPORT

02/28/2020

IGI Report Number LG407962016

Shape and Cutting Style ROUND BRILLIANT

Measurements 5.26 - 5.31 X 3.26 MM

GRADING RESULTS

Carat Weight 0.55 CARAT

Color Grade E

Clarity Grade VS 1

Cut Grade IDEAL

ADDITIONAL GRADING INFORMATION

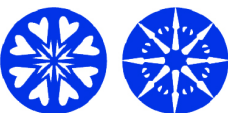
Polish EXCELLENT

Symmetry EXCELLENT

Fluorescence NONE

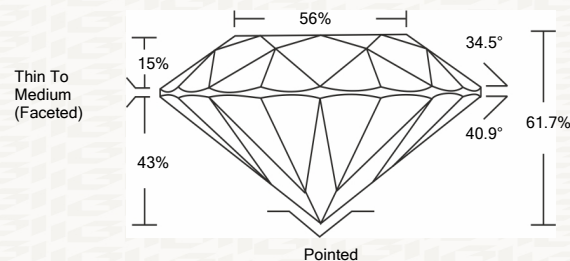
Inscription(s) LABGROWN IGI LG407962016

Comments: HEARTS & ARROWS
This Laboratory grown diamond was created by chemical vapor deposition process (CVD)
Type IIa

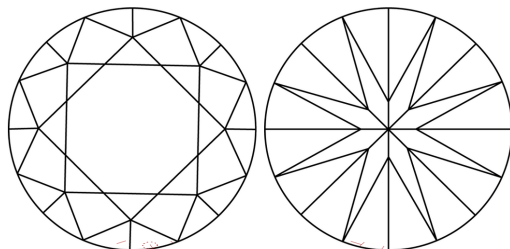


ADDITIONAL INFORMATION

PROPORTIONS



CLARITY CHARACTERISTICS



KEY TO SYMBOLS

Red symbols indicate internal characteristics.
Green symbols indicate external characteristics.

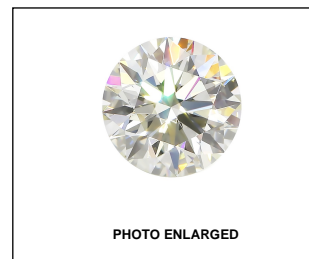
This Report is subject to the terms and conditions

© IGI 2000, edition 2019 all rights reserved.

GRADING SCALES

Table with 5 columns: COLOR GRADING SCALE (CL, NC, FT, VLT, LT) and CLARITY (10x) GRADING SCALE (FL, IF, VVS, VS, SI, I)

The laboratory grown diamond described in this Report (Report) has been graded, tested, analyzed, examined and/or inscribed by International Gemological Institute (I.G.I.).



IGI LABORATORY GROWN DIAMOND GRADING REPORT

02/28/2020

IGI Report Number LG407962016

Shape and Cutting Style ROUND BRILLIANT

Measurements 5.26 - 5.31 X 3.26 MM

GRADING RESULTS

Carat Weight 0.55 CARAT

Color Grade E

Clarity Grade VS 1

Cut Grade IDEAL

ADDITIONAL GRADING INFORMATION

Polish EXCELLENT

Symmetry EXCELLENT

Fluorescence NONE

Inscription(s) LABGROWN IGI LG407962016

Comments: HEARTS & ARROWS
This Laboratory grown diamond was created by chemical vapor deposition process (CVD)
Type IIa



IGI

Summary of report details including IGI Report No, Round Brilliant, 5.26 - 5.31 X 3.26 MM, 0.55 CARAT, E, VS 1, IDEAL, 61.7%, 65%, Thin To Medium (Faceted), Polished, EXCELLENT, EXCELLENT, NONE, LABGROWN IGI LG407962016, and HEARTS & ARROWS comment.