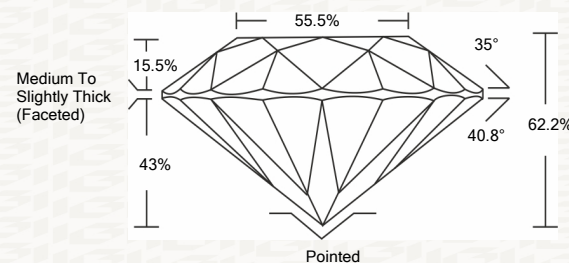




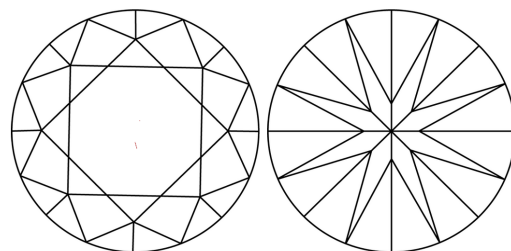
IGI GEMOLOGICAL REPORT

ADDITIONAL INFORMATION

PROPORTIONS



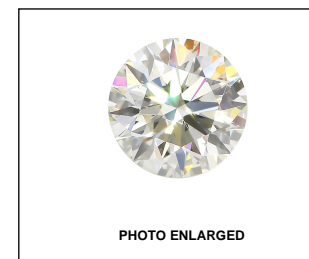
CLARITY CHARACTERISTICS



GRADING SCALES

Table with 5 columns: CL (Colorless D-F), NC (Near Colorless G-J), FT (Faint K-M), VLT (Very Light N-R), LT (Light S-Z). Rows include Color Grading Scale and Clarity (10x) Grading Scale.

The laboratory grown diamond described in this Report (Report) has been graded, tested, analyzed, examined and/or inscribed by International Gemological Institute (I.G.I.). A laboratory grown diamond is one that has essentially the same chemical, physical and optical properties as a mined diamond...

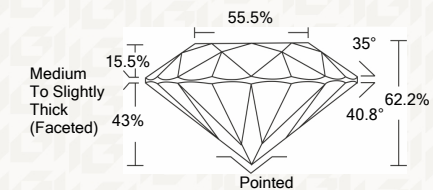


IGI LABORATORY GROWN DIAMOND GRADING REPORT

02/28/2020 IGI Report Number LG407962052 Shape and Cutting Style ROUND BRILLIANT Measurements 8.18 - 8.23 X 5.11 MM

GRADING RESULTS

Carat Weight 2.11 CARATS Color Grade G Clarity Grade VVS 2 Cut Grade IDEAL



ADDITIONAL GRADING INFORMATION

Polish EXCELLENT Symmetry EXCELLENT Fluorescence NONE Inscription(s) LABGROWN IGI LG407962052

Comments: HEARTS & ARROWS This Laboratory grown diamond was created by chemical vapor deposition process (CVD) Type IIa

IGI LABORATORY GROWN DIAMOND GRADING REPORT

02/28/2020 IGI Report Number LG407962052 Shape and Cutting Style ROUND BRILLIANT Measurements 8.18 - 8.23 X 5.11 MM

GRADING RESULTS

Carat Weight 2.11 CARATS Color Grade G Clarity Grade VVS 2 Cut Grade IDEAL

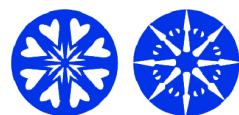
ADDITIONAL GRADING INFORMATION

Polish EXCELLENT Symmetry EXCELLENT Fluorescence NONE Inscription(s) LABGROWN IGI LG407962052

Comments: HEARTS & ARROWS This Laboratory grown diamond was created by chemical vapor deposition process (CVD) Type IIa

KEY TO SYMBOLS

Red symbols indicate internal characteristics. Green symbols indicate external characteristics.



This Report is subject to the terms and conditions

© IGI 2000, edition 2019 all rights reserved.



THE DOCUMENT WAS PRODUCED THE FOLLOWING SECURITY MEASURES: SPECIAL DOCUMENT PAPER, INK SCREENS, WATERMARK, BACKGROUND DESIGN, HOLOGRAM AND OTHER SECURITY FEATURES NOT LISTED AND DO EXCEED DOCUMENT SECURITY INDUSTRY DUDLINES



IGI

02/28/2020 IGI Report No LG407962052 ROUND BRILLIANT 8.18 - 8.23 X 5.11 MM Carat Weight 2.11 CARATS Color Grade G Clarity Grade VVS 2 Cut Grade IDEAL Depth 62.2% Table 55.5% Girdle Medium To Slightly Thick (Faceted) Polished EXCELLENT Polished EXCELLENT Symmetry EXCELLENT Fluorescence NONE Inscription(s) LABGROWN IGI LG407962052 Comments: HEARTS & ARROWS This Laboratory grown diamond was created by chemical vapor deposition process (CVD) Type IIa