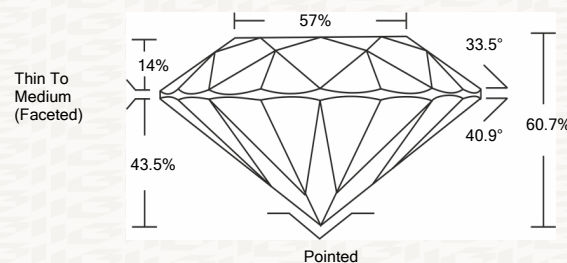




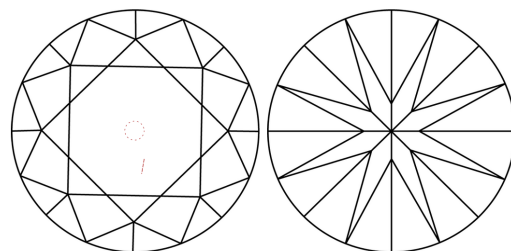
IGI GEMOLOGICAL REPORT

ADDITIONAL INFORMATION

PROPORTIONS



CLARITY CHARACTERISTICS



KEY TO SYMBOLS

Red symbols indicate internal characteristics. Green symbols indicate external characteristics.

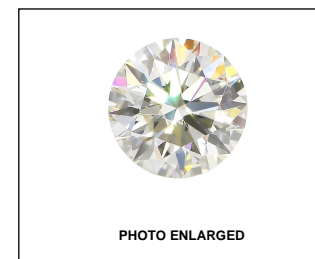
This Report is subject to the terms and conditions

© IGI 2000, edition 2019 all rights reserved.

GRADING SCALES

Table with 2 rows and 5 columns: COLOR GRADING SCALE (CL, NC, FT, VLT, LT) and CLARITY (10x) GRADING SCALE (FL, IF, VVS, VS, SI, I)

The laboratory grown diamond described in this Report (Report) has been graded, tested, analyzed, examined and/or inscribed by International Gemological Institute (IGI). A laboratory grown diamond is one that has essentially the same chemical, physical and optical properties as a mined diamond...



IGI LABORATORY GROWN DIAMOND GRADING REPORT

02/28/2020 IGI Report Number LG407962056 Shape and Cutting Style ROUND BRILLIANT Measurements 8.35 - 8.40 X 5.09 MM

GRADING RESULTS

Carat Weight 2.16 CARATS Color Grade F Clarity Grade VVS 2 Cut Grade IDEAL

ADDITIONAL GRADING INFORMATION

Polish EXCELLENT Symmetry EXCELLENT Fluorescence NONE Inscription(s) LABGROWN IGI LG407962056

Comments: HEARTS & ARROWS This Laboratory grown diamond was created by chemical vapor deposition process (CVD) Type IIa



02/28/2020 IGI Report No LG407962056 ROUND BRILLIANT 8.35 - 8.40 X 5.09 MM Carat Weight 2.16 CARATS Color Grade F Clarity Grade VVS 2 Cut Grade IDEAL Depth 60.7% Table 57% Girdle Thin To Medium (Faceted) Culet Polished EXCELLENT Symmetry EXCELLENT Fluorescence NONE Inscription(s) LABGROWN IGI LG407962056 Comments: HEARTS & ARROWS This Laboratory grown diamond was created by chemical vapor deposition process (CVD) Type IIa

IGI LABORATORY GROWN DIAMOND GRADING REPORT 02/28/2020 IGI Report Number LG407962056 Shape and Cutting Style ROUND BRILLIANT Measurements 8.35 - 8.40 X 5.09 MM GRADING RESULTS Carat Weight 2.16 CARATS Color Grade F Clarity Grade VVS 2 Cut Grade IDEAL ADDITIONAL GRADING INFORMATION Polish EXCELLENT Symmetry EXCELLENT Fluorescence NONE Inscription(s) LABGROWN IGI LG407962056 Comments: HEARTS & ARROWS This Laboratory grown diamond was created by chemical vapor deposition process (CVD) Type IIa

