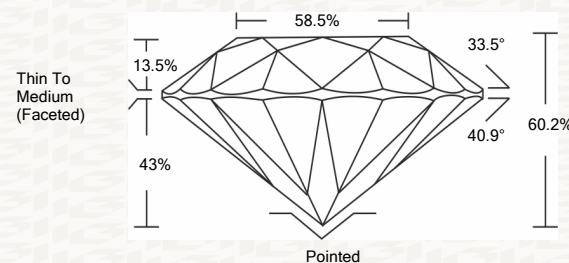




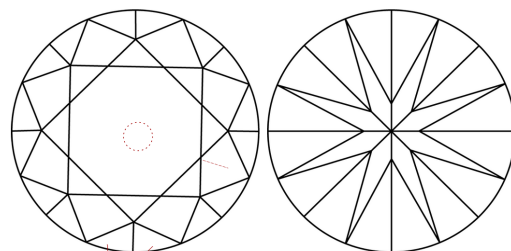
IGI GEMOLOGICAL REPORT

ADDITIONAL INFORMATION

PROPORTIONS



CLARITY CHARACTERISTICS



KEY TO SYMBOLS

Red symbols indicate internal characteristics. Green symbols indicate external characteristics.

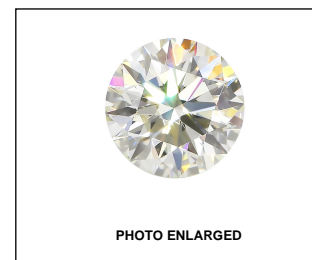
This Report is subject to the terms and conditions

© IGI 2000, edition 2019 all rights reserved.

GRADING SCALES

Table with 2 rows and 5 columns: COLOR GRADING SCALE (CL, NC, FT, VLT, LT) and CLARITY (10x) GRADING SCALE (FL, IF, VVS, VS, SI, I).

The laboratory grown diamond described in this Report (Report) has been graded, tested, analyzed, examined and/or inscribed by International Gemological Institute (I.G.I.).



IGI LABORATORY GROWN DIAMOND GRADING REPORT

02/28/2020 IGI Report Number LG407962058 Shape and Cutting Style ROUND BRILLIANT Measurements 8.45 - 8.50 X 5.10 MM

GRADING RESULTS

Carat Weight 2.22 CARATS Color Grade F Clarity Grade VS 1 Cut Grade IDEAL

ADDITIONAL GRADING INFORMATION

Polish EXCELLENT Symmetry EXCELLENT Fluorescence NONE Inscription(s) LABGROWN IGI LG407962058

Comments: HEARTS & ARROWS This Laboratory grown diamond was created by chemical vapor deposition process (CVD) Type IIa



IGI Report No. LG407962058 ROUND BRILLIANT 8.45 - 8.50 X 5.10 MM 2.22 CARATS F VS 1 IDEAL 60.2% 58.5% Thin To Medium (Faceted) Pointed EXCELLENT EXCELLENT NONE LABGROWN IGI LG407962058

IGI LABORATORY GROWN DIAMOND GRADING REPORT

02/28/2020 IGI Report Number LG407962058 Shape and Cutting Style ROUND BRILLIANT Measurements 8.45 - 8.50 X 5.10 MM

GRADING RESULTS

Carat Weight 2.22 CARATS Color Grade F Clarity Grade VS 1 Cut Grade IDEAL

ADDITIONAL GRADING INFORMATION

Polish EXCELLENT Symmetry EXCELLENT Fluorescence NONE Inscription(s) LABGROWN IGI LG407962058

Comments: HEARTS & ARROWS This Laboratory grown diamond was created by chemical vapor deposition process (CVD) Type IIa

