



IGI GEMOLOGICAL REPORT

IGI LABORATORY GROWN DIAMOND GRADING REPORT

02/28/2020
IGI Report Number LG407962059
Shape and Cutting Style ROUND BRILLIANT
Measurements 8.34 - 8.36 X 5.02 MM

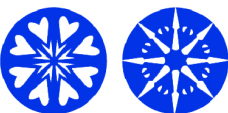
GRADING RESULTS

Carat Weight 2.12 CARATS
Color Grade G
Clarity Grade VS 1
Cut Grade IDEAL

ADDITIONAL GRADING INFORMATION

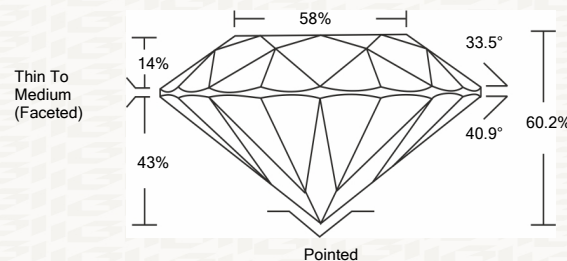
Polish EXCELLENT
Symmetry EXCELLENT
Fluorescence NONE
Inscription(s) LABGROWN IGI LG407962059

Comments: HEARTS & ARROWS
This Laboratory grown diamond was created by chemical vapor deposition process (CVD)
Type IIa

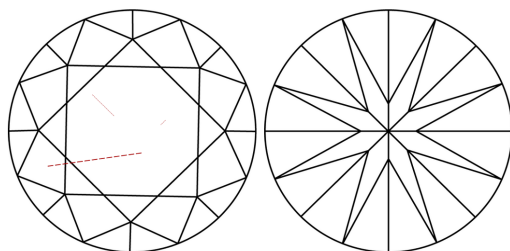


ADDITIONAL INFORMATION

PROPORTIONS



CLARITY CHARACTERISTICS



KEY TO SYMBOLS

Red symbols indicate internal characteristics.
Green symbols indicate external characteristics.

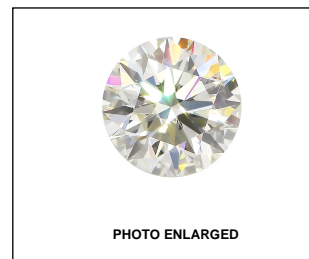
This Report is subject to the terms and conditions

© IGI 2000, edition 2019 all rights reserved.

GRADING SCALES

Table with 2 rows and 5 columns: COLOR GRADING SCALE (CL, NC, FT, VLT, LT) and CLARITY (10x) GRADING SCALE (FL, IF, VVS, VS, SI, I).

The laboratory grown diamond described in this Report (Report) has been graded, tested, analyzed, examined and/or inscribed by International Gemological Institute (I.G.I.).



IGI LABORATORY GROWN DIAMOND GRADING REPORT

02/28/2020
IGI Report Number LG407962059
Shape and Cutting Style ROUND BRILLIANT
Measurements 8.34 - 8.36 X 5.02 MM

GRADING RESULTS

Carat Weight 2.12 CARATS
Color Grade G
Clarity Grade VS 1
Cut Grade IDEAL

ADDITIONAL GRADING INFORMATION

Polish EXCELLENT
Symmetry EXCELLENT
Fluorescence NONE
Inscription(s) LABGROWN IGI LG407962059

Comments: HEARTS & ARROWS
This Laboratory grown diamond was created by chemical vapor deposition process (CVD)
Type IIa



IGI

IGI Report No. LG407962059
ROUND BRILLIANT
8.34 - 8.36 X 5.02 MM
Carat Weight 2.12 CARATS
Color Grade G
Clarity Grade VS 1
Cut Grade IDEAL
Depth 60.2%
Table 85%
Girdle Thin To Medium (Faceted)
Culet Pointed
Polish EXCELLENT
Symmetry EXCELLENT
Fluorescence NONE
Inscription(s) LABGROWN IGI LG407962059
Comments: HEARTS & ARROWS
This Laboratory grown diamond was created by chemical vapor deposition process (CVD)
Type IIa