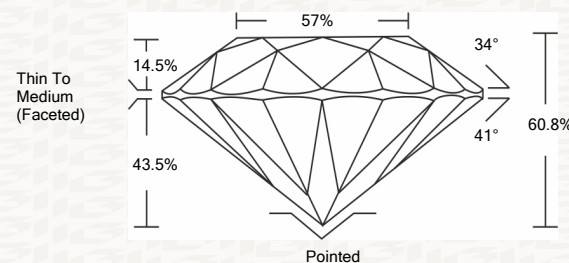




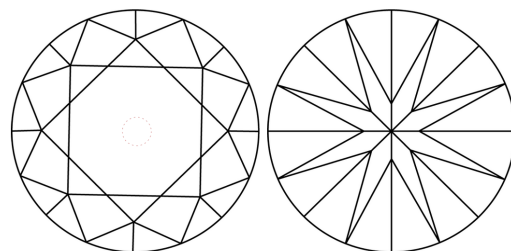
IGI GEMOLOGICAL REPORT

ADDITIONAL INFORMATION

PROPORTIONS



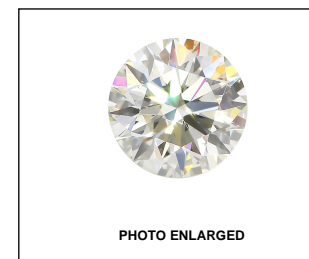
CLARITY CHARACTERISTICS



GRADING SCALES

Table with 5 columns for Color Grading Scale (CL, NC, FT, VLT, LT) and 5 columns for Clarity (10x) Grading Scale (FL, IF, VS, SI, I).

The laboratory grown diamond described in this Report (Report) has been graded, tested, analyzed, examined and/or inscribed by International Gemological Institute (I.G.I.).

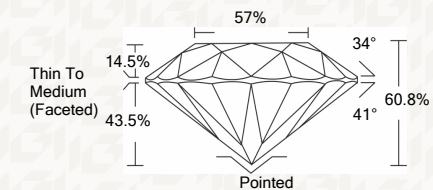


IGI LABORATORY GROWN DIAMOND GRADING REPORT

03/18/2020 IGI Report Number LG414091541 Shape and Cutting Style ROUND BRILLIANT Measurements 6.89 - 6.91 X 4.20 MM

GRADING RESULTS

Carat Weight 1.20 CARAT Color Grade E Clarity Grade VVS 2 Cut Grade IDEAL



ADDITIONAL GRADING INFORMATION

Polish EXCELLENT Symmetry EXCELLENT Fluorescence NONE Inscription(s) LABGROWN IGI LG414091541

Comments: HEARTS & ARROWS This Laboratory grown diamond was created by chemical vapor deposition process (CVD) Type IIa

IGI LABORATORY GROWN DIAMOND GRADING REPORT

03/18/2020 IGI Report Number LG414091541 Shape and Cutting Style ROUND BRILLIANT Measurements 6.89 - 6.91 X 4.20 MM

GRADING RESULTS

Carat Weight 1.20 CARAT Color Grade E Clarity Grade VVS 2 Cut Grade IDEAL

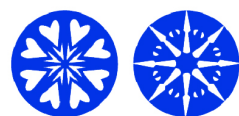
ADDITIONAL GRADING INFORMATION

Polish EXCELLENT Symmetry EXCELLENT Fluorescence NONE Inscription(s) LABGROWN IGI LG414091541

Comments: HEARTS & ARROWS This Laboratory grown diamond was created by chemical vapor deposition process (CVD) Type IIa

KEY TO SYMBOLS

Red symbols indicate internal characteristics. Green symbols indicate external characteristics.



This Report is subject to the terms and conditions

© IGI 2000, edition 2019 all rights reserved.



THE DOCUMENT WAS PRODUCED THE FOLLOWING SECURITY MEASURES: SPECIAL DOCUMENT PAPER, INK SCREENS, WATERMARK, BACKGROUND DESIGN, HOLOGRAM AND OTHER SECURITY FEATURES NOT LISTED AND DO EXCEED DOCUMENT SECURITY INDUSTRY DUDLINES



IGI

03/18/2020 IGI Report No. LG414091541 ROUND BRILLIANT 6.89 - 6.91 X 4.20 MM 1.20 CARAT E VVS 2 IDEAL 60.8% 57% Thin To Medium (Faceted) Pointed EXCELLENT EXCELLENT NONE LABGROWN IGI LG414091541 Comments: HEARTS & ARROWS This Laboratory grown diamond was created by chemical vapor deposition process (CVD) Type IIa