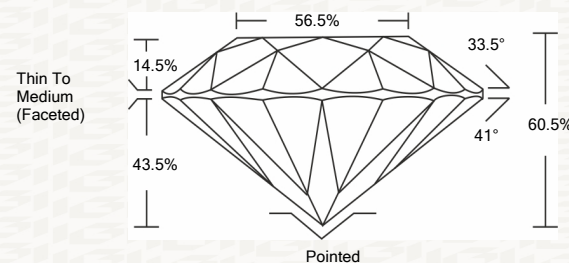




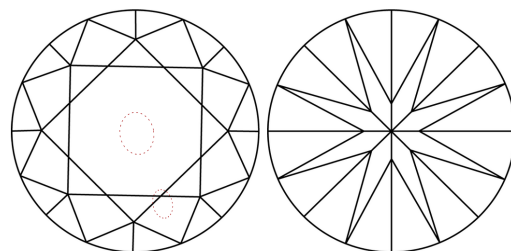
IGI GEMOLOGICAL REPORT

ADDITIONAL INFORMATION

PROPORTIONS



CLARITY CHARACTERISTICS



KEY TO SYMBOLS

Red symbols indicate internal characteristics. Green symbols indicate external characteristics.

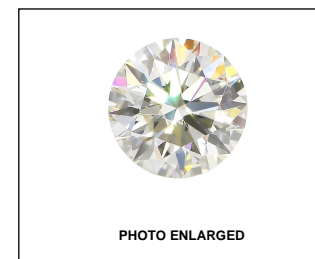
This Report is subject to the terms and conditions

© IGI 2000, edition 2019 all rights reserved.

GRADING SCALES

Table with 2 main sections: COLOR GRADING SCALE (CL, NC, FT, VLT, LT) and CLARITY (10x) GRADING SCALE (FL, IF, VVS, VS, SI, I)

The laboratory grown diamond described in this Report (Report) has been graded, tested, analyzed, examined and/or inscribed by International Gemological Institute (I.G.I.).

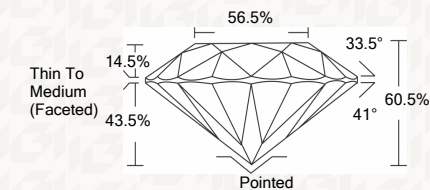


IGI LABORATORY GROWN DIAMOND GRADING REPORT

03/19/2020 IGI Report Number LG414091544 Shape and Cutting Style ROUND BRILLIANT Measurements 6.92 - 6.95 X 4.20 MM

GRADING RESULTS

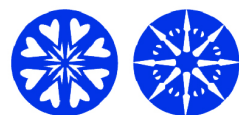
Carat Weight 1.21 CARAT Color Grade F Clarity Grade VS 2 Cut Grade IDEAL



ADDITIONAL GRADING INFORMATION

Polish EXCELLENT Symmetry EXCELLENT Fluorescence NONE Inscription(s) LABGROWN IGI LG414091544

Comments: HEARTS & ARROWS This Laboratory grown diamond was created by chemical vapor deposition process (CVD) Type IIa



IGI

03/19/2020 IGI Report No. LG414091544 ROUND BRILLIANT 6.92 - 6.95 X 4.20 MM Carat Weight 1.21 CARAT Color Grade F Clarity Grade VS 2 Depth 60.5% Table 56.5% Girdle Thin To Medium (Faceted) Culet Pointed Polish EXCELLENT Symmetry EXCELLENT Fluorescence NONE Inscription(s) LABGROWN IGI LG414091544 Comments: HEARTS & ARROWS This Laboratory grown diamond was created by chemical vapor deposition process (CVD) Type IIa