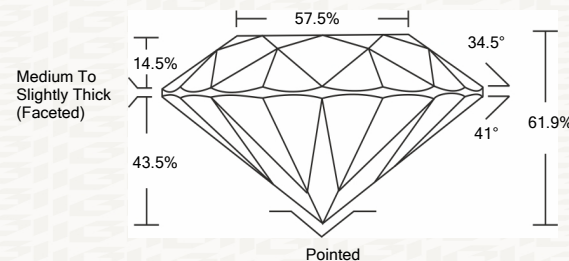




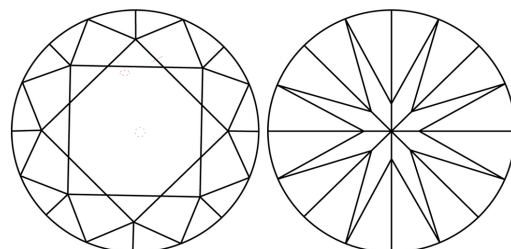
IGI GEMOLOGICAL REPORT

ADDITIONAL INFORMATION

PROPORTIONS



CLARITY CHARACTERISTICS



KEY TO SYMBOLS

Red symbols indicate internal characteristics. Green symbols indicate external characteristics.

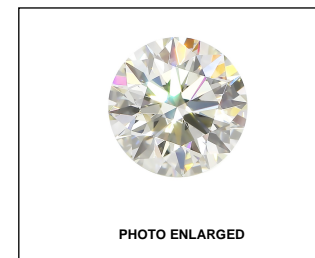
This Report is subject to the terms and conditions

© IGI 2000, edition 2019 all rights reserved.

GRADING SCALES

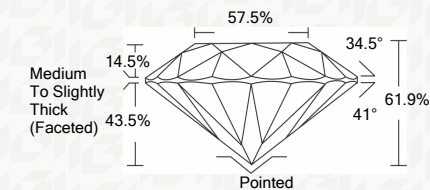
Table with 2 rows and 5 columns showing grading scales for Color (CL) and Clarity (10x) (CLARITY).

The laboratory grown diamond described in this Report (Report) has been graded, tested, analyzed, examined and/or inscribed by International Gemological Institute (IGI). A laboratory grown diamond is one that has essentially the same chemical, physical and optical properties as a mined diamond...



IGI LABORATORY GROWN DIAMOND GRADING REPORT

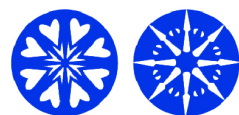
03/19/2020 IGI Report Number LG414091593 Shape and Cutting Style ROUND BRILLIANT Measurements 8.18 - 8.20 X 5.07 MM GRADING RESULTS Carat Weight 2.09 CARATS Color Grade E Clarity Grade VS 1 Cut Grade IDEAL



ADDITIONAL GRADING INFORMATION

Polish VERY GOOD Symmetry EXCELLENT Fluorescence NONE Inscription(s) LABGROWN IGI LG414091593

Comments: HEARTS & ARROWS This Laboratory grown diamond was created by chemical vapor deposition process (CVD) Type IIa



IGI

03/19/2020 IGI Report No. LG414091593

ROUND BRILLIANT 8.18 - 8.20 X 5.07 MM

Carat Weight 2.09 CARATS Color Grade E Clarity Grade VS 1 Cut Grade IDEAL Depth 61.9% Table 57.5% Girdle Medium To Slightly Thick (Faceted) Polished VERY GOOD EXCELLENT NONE LABGROWN IGI LG414091593

Comments: HEARTS & ARROWS This Laboratory grown diamond was created by chemical vapor deposition process (CVD) Type IIa