



IGI GEMOLOGICAL REPORT

IGI LABORATORY GROWN DIAMOND GRADING REPORT

03/19/2020
IGI Report Number LG414091600
Shape and Cutting Style ROUND BRILLIANT
Measurements 8.16 - 8.20 X 5.10 MM

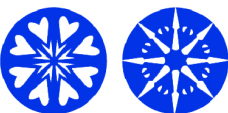
GRADING RESULTS

Carat Weight 2.11 CARATS
Color Grade F
Clarity Grade VS 1
Cut Grade IDEAL

ADDITIONAL GRADING INFORMATION

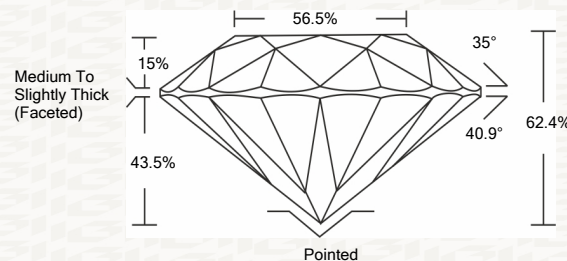
Polish EXCELLENT
Symmetry EXCELLENT
Fluorescence NONE
Inscription(s) LABGROWN IGI LG414091600

Comments: HEARTS & ARROWS
This Laboratory grown diamond was created by chemical vapor deposition process (CVD)
Type IIa

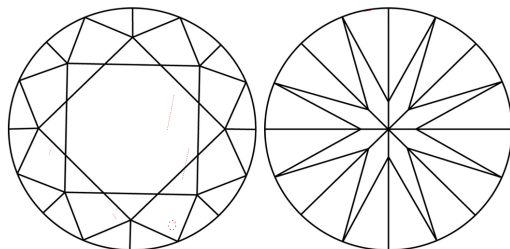


ADDITIONAL INFORMATION

PROPORTIONS



CLARITY CHARACTERISTICS



KEY TO SYMBOLS

Red symbols indicate internal characteristics.
Green symbols indicate external characteristics.

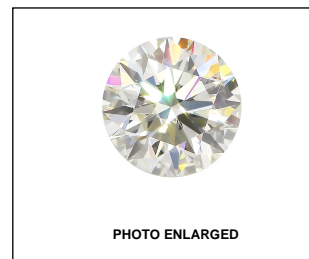
This Report is subject to the terms and conditions

© IGI 2000, edition 2019 all rights reserved.

GRADING SCALES

Table with 5 columns for Color Grading Scale (CL, NC, FT, VLT, LT) and Clarity (10x) Grading Scale (FL, IF, VVS, VS, SI, I).

The laboratory grown diamond described in this Report (Report) has been graded, tested, analyzed, examined and/or inscribed by International Gemological Institute (I.G.I.).

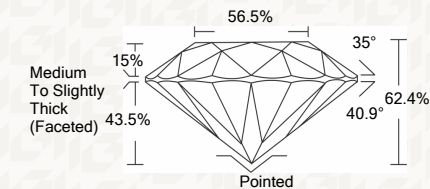


IGI LABORATORY GROWN DIAMOND GRADING REPORT

03/19/2020
IGI Report Number LG414091600
Shape and Cutting Style ROUND BRILLIANT
Measurements 8.16 - 8.20 X 5.10 MM

GRADING RESULTS

Carat Weight 2.11 CARATS
Color Grade F
Clarity Grade VS 1
Cut Grade IDEAL



ADDITIONAL GRADING INFORMATION

Polish EXCELLENT
Symmetry EXCELLENT
Fluorescence NONE
Inscription(s) LABGROWN IGI LG414091600

Comments: HEARTS & ARROWS
This Laboratory grown diamond was created by chemical vapor deposition process (CVD)
Type IIa



IGI

03/19/2020
IGI Report No. LG414091600
ROUND BRILLIANT
8.16 - 8.20 X 5.10 MM
Carat Weight 2.11 CARATS
Color Grade F
Clarity Grade VS 1
Depth 62.4%
Table 56.5%
Girdle Medium To Slightly Thick (Faceted)
Culet Pointed
Polish EXCELLENT
Symmetry EXCELLENT
Fluorescence NONE
Inscription(s) LABGROWN IGI LG414091600
Comments: HEARTS & ARROWS
This Laboratory grown diamond was created by chemical vapor deposition process (CVD)
Type IIa