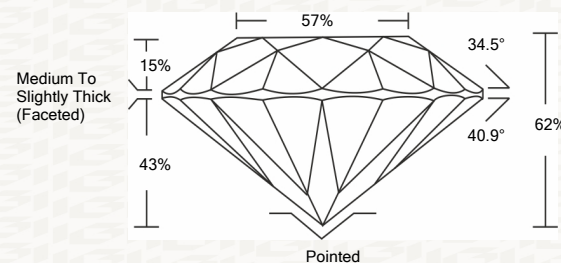




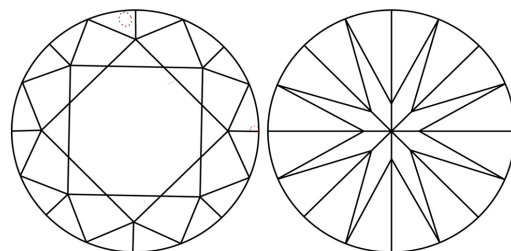
IGI GEMOLOGICAL REPORT

ADDITIONAL INFORMATION

PROPORTIONS



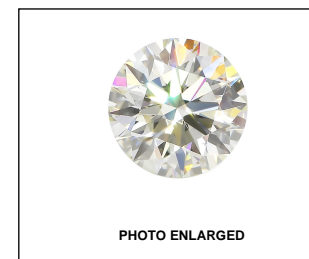
CLARITY CHARACTERISTICS



GRADING SCALES

Table with 2 rows and 5 columns: COLOR GRADING SCALE (CL, NC, FT, VLT, LT) and CLARITY (10x) GRADING SCALE (FL, IF, VVS, VS, SI, I).

The laboratory grown diamond described in this Report (Report) has been graded, tested, analyzed, examined and/or inscribed by International Gemological Institute (I.G.I.).

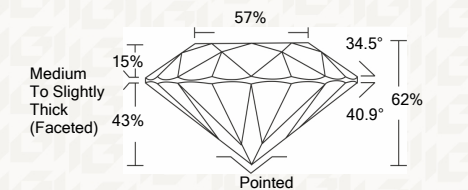


IGI LABORATORY GROWN DIAMOND GRADING REPORT

03/19/2020 IGI Report Number LG414091614 Shape and Cutting Style ROUND BRILLIANT Measurements 8.35 - 8.38 X 5.18 MM

GRADING RESULTS

Carat Weight 2.24 CARATS Color Grade F Clarity Grade VS 1 Cut Grade IDEAL



ADDITIONAL GRADING INFORMATION

Polish EXCELLENT Symmetry EXCELLENT Fluorescence NONE Inscription(s) LABGROWN IGI LG414091614

Comments: HEARTS & ARROWS This Laboratory grown diamond was created by chemical vapor deposition process (CVD) Type IIa

IGI LABORATORY GROWN DIAMOND GRADING REPORT

03/19/2020 IGI Report Number LG414091614 Shape and Cutting Style ROUND BRILLIANT Measurements 8.35 - 8.38 X 5.18 MM

GRADING RESULTS

Carat Weight 2.24 CARATS Color Grade F Clarity Grade VS 1 Cut Grade IDEAL

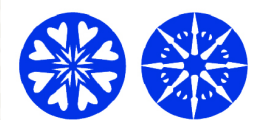
ADDITIONAL GRADING INFORMATION

Polish EXCELLENT Symmetry EXCELLENT Fluorescence NONE Inscription(s) LABGROWN IGI LG414091614

Comments: HEARTS & ARROWS This Laboratory grown diamond was created by chemical vapor deposition process (CVD) Type IIa

KEY TO SYMBOLS

Red symbols indicate internal characteristics. Green symbols indicate external characteristics.



This Report is subject to the terms and conditions

© IGI 2000, edition 2019 all rights reserved.



THE DOCUMENT WAS PRODUCED THE FOLLOWING SECURITY MEASURES: SPECIAL DOCUMENT PAPER, INK SCREENS, WATERMARK, BACKGROUND DESIGN, HOLOGRAM AND OTHER SECURITY FEATURES NOT LISTED AND DO EXCEED DOCUMENT SECURITY INDUSTRY DUDLINES



IGI

03/19/2020 IGI Report No. LG414091614 ROUND BRILLIANT 8.35 - 8.38 X 5.18 MM Carat Weight 2.24 CARATS Color Grade F VS 1 IDEAL 82% 57% Medium To Slightly Thick (Faceted) Pointed EXCELLENT EXCELLENT NONE LABGROWN IGI LG414091614 Comments: HEARTS & ARROWS This Laboratory grown diamond was created by chemical vapor deposition process (CVD) Type IIa