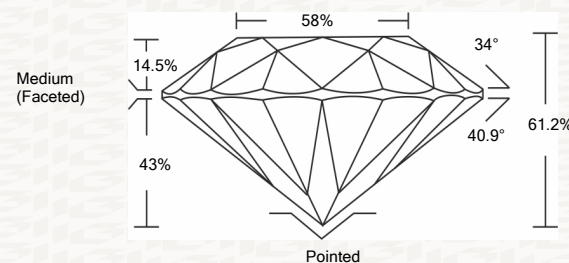




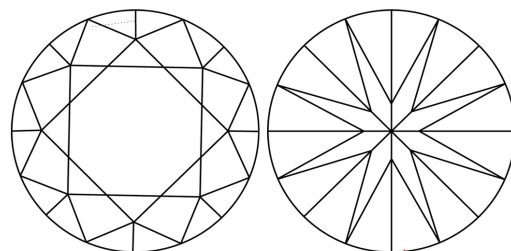
IGI GEMOLOGICAL REPORT

ADDITIONAL INFORMATION

PROPORTIONS



CLARITY CHARACTERISTICS



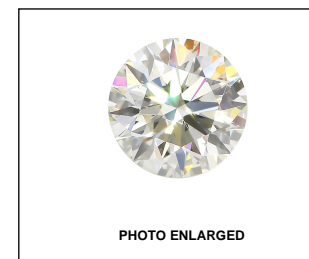
GRADING SCALES

| | | | | | | |
|-----------------------------|------------------------------|-----------------------------|------------------------|-------------------|-----------|---|
| COLOR GRADING SCALE | CL | NC | FT | VL | LT | |
| | COLORLESS D-F | NEAR COLORLESS G-J | FAINT K-M | VERY LIGHT N-R | LIGHT S-Z | |
| CLARITY (10x) GRADING SCALE | FL | IF | VVS | VS | SI | I |
| | FLAWLESS INTERNALLY FLAWLESS | VERY VERY SLIGHTLY INCLUDED | VERY SLIGHTLY INCLUDED | SLIGHTLY INCLUDED | INCLUDED | |

The laboratory grown diamond described in this Report (Report) has been graded, tested, analyzed, examined and/or inscribed by International Gemological Institute (I.G.I.). A laboratory grown diamond is one that has essentially the same chemical, physical and optical properties as a mined diamond, with the exception of being grown by man (a manufactured product). I.G.I. employs and utilizes those techniques and equipment currently available to I.G.I., including, without limitation, 10X magnification, corrected triplet loupe, binocular microscope, master color comparison stones, non-contact optical measuring devices, Diamond Sure™, Diamond View™, Spectrophotometer and such other instruments and/or processes as deemed appropriate by I.G.I. This Report includes advanced security features. A duly accredited gemologist or jeweler can advise you with respect to the importance of and interrelationship between cut, color, clarity and carat weight.

THIS REPORT IS NEITHER A GUARANTEE, VALUATION, NOR APPRAISAL OF THE GEMSTONE DESCRIBED HEREIN. PLEASE REVIEW THE LIMITATIONS AND RESTRICTIONS SET FORTH ONLINE. FOR ADDITIONAL INFORMATION, IMPORTANT LIMITATIONS AND DISCLAIMERS, PLEASE GO TO WWW.IGI.ORG OR CALL 1-888-BUY-IGIS.

© INTERNATIONAL GEMOLOGICAL INSTITUTE, INC.



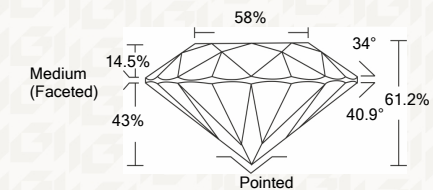
LASERSCRIBE SM

IGI LABORATORY GROWN DIAMOND GRADING REPORT

04/24/2020
 IGI Report Number **LG418023455**
 Shape and Cutting Style **ROUND BRILLIANT**
 Measurements **6.87 - 6.91 X 4.21 MM**

GRADING RESULTS

Carat Weight **1.22 CARAT**
 Color Grade **G**
 Clarity Grade **VS 1**
 Cut Grade **IDEAL**



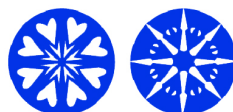
ADDITIONAL GRADING INFORMATION

Polish **EXCELLENT**
 Symmetry **EXCELLENT**
 Fluorescence **NONE**
 Inscription(s) **LABGROWN IGI LG418023455**

Comments: HEARTS & ARROWS
 No indication of post growth treatment
 This Laboratory grown diamond was created by chemical vapor deposition process (CVD)
 Type IIa

KEY TO SYMBOLS

Red symbols indicate internal characteristics.
 Green symbols indicate external characteristics.



This Report is subject to the terms and conditions

© IGI 2000, edition 2019 all rights reserved.



IGI

04/24/2020
 IGI Report No. LG418023455
ROUND BRILLIANT
6.87 - 6.91 X 4.21 MM

| | | | |
|---------------|------------------|--|--|
| Carat Weight | 1.22 CARAT | Culet | Pointed |
| Color Grade | G | Polish | EXCELLENT |
| Clarity Grade | VS 1 | Symmetry | EXCELLENT |
| Cut Grade | IDEAL | Fluorescence | NONE |
| Depth | 61.2% | Inscription(s) | LABGROWN IGI LG418023455 |
| Table | 58% | Comments: | HEARTS & ARROWS |
| Grade | Medium (Faceted) | No indication of post growth treatment | This Laboratory grown diamond was created by chemical vapor deposition process (CVD) |

Type IIa