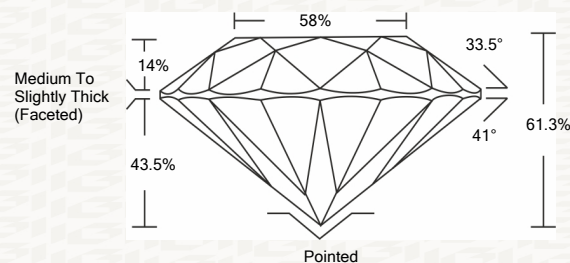




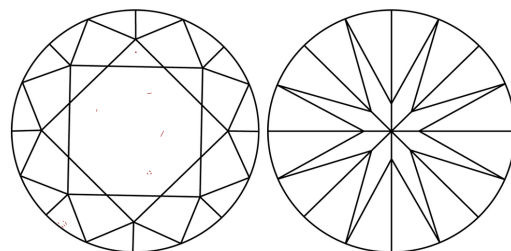
IGI GEMOLOGICAL REPORT

ADDITIONAL INFORMATION

PROPORTIONS



CLARITY CHARACTERISTICS



KEY TO SYMBOLS

Red symbols indicate internal characteristics. Green symbols indicate external characteristics.

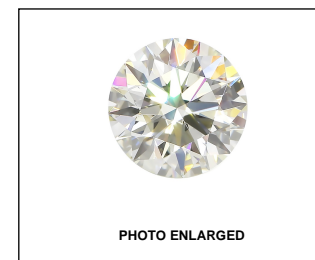
This Report is subject to the terms and conditions

© IGI 2000, edition 2019 all rights reserved.

GRADING SCALES

Table with 2 rows and 5 columns showing grading scales for Color and Clarity.

The laboratory grown diamond described in this Report (Report) has been graded, tested, analyzed, examined and/or inscribed by International Gemological Institute (I.G.I.).



LASERSCRIBE SM



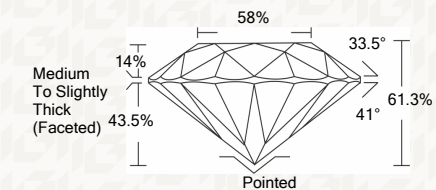
THE DOCUMENT WAS PRODUCED THE FOLLOWING SECURITY MEASURES: SPECIAL DOCUMENT SECURITY PAPER, SECURITY MARK, BACKGROUND DESIGNS HOLOGRAM AND OTHER SECURITY FEATURES NOT LISTED AND DO NOT VIOLATE ANY INDUSTRY DUBLINES

IGI LABORATORY GROWN DIAMOND GRADING REPORT

05/06/2020 IGI Report Number LG418025494 Shape and Cutting Style ROUND BRILLIANT Measurements 8.82 - 8.84 X 5.41 MM

GRADING RESULTS

Carat Weight 2.60 CARATS Color Grade E Clarity Grade VS 1 Cut Grade IDEAL



ADDITIONAL GRADING INFORMATION

Polish VERY GOOD Symmetry EXCELLENT Fluorescence NONE Inscription(s) LABGROWN IGI LG418025494

Comments: This Laboratory grown diamond was created by chemical vapor deposition process (CVD) Type IIa



IGI

05/06/2020 IGI Report No. LG418025494 ROUND BRILLIANT 8.82 - 8.84 X 5.41 MM Carat Weight 2.60 CARATS Color Grade E Clarity Grade VS 1 Depth 61.3% Table 58% Girdle Medium To Slightly Thick (Faceted) Polished Culet None Symmetry EXCELLENT Fluorescence NONE Inscription(s) LABGROWN IGI LG418025494 Comments: This Laboratory grown diamond was created by chemical vapor deposition process (CVD) Type IIa