



IGI GEMOLOGICAL REPORT

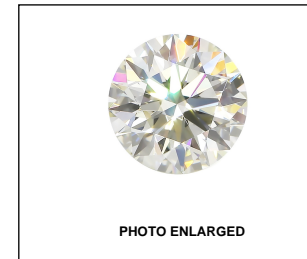
ADDITIONAL INFORMATION

GRADING SCALES

Table with 2 columns: COLOR GRADING SCALE and CLARITY (10x) GRADING SCALE. Rows include CL, NC, FT, VLT, LT and FL, IF, VVS, VS, SI, I.

The laboratory grown diamond described in this Report (Report) has been graded, tested, analyzed, examined and/or inscribed by International Gemological Institute (IGI). A laboratory grown diamond is one that has essentially the same chemical, physical and optical properties as a mined diamond, with the exception of being grown by man (a manufactured product).

© INTERNATIONAL GEMOLOGICAL INSTITUTE, INC.

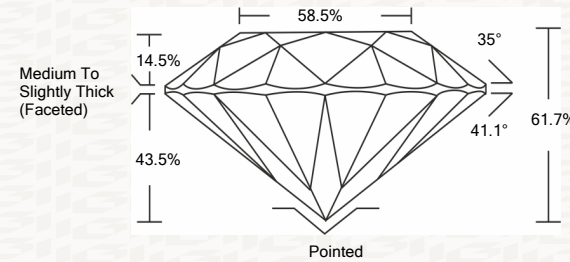


LABGROWN IGI LG425048547

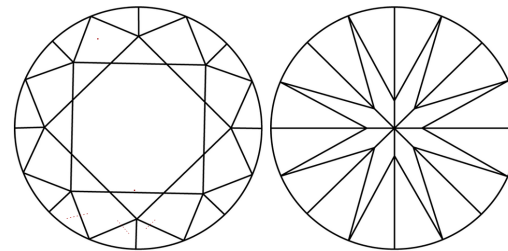
LASERSCRIBE SM



PROPORTIONS



CLARITY CHARACTERISTICS



KEY TO SYMBOLS

Red symbols indicate internal characteristics. Green symbols indicate external characteristics.

This Report is subject to the terms and conditions

© IGI 2000, edition 2019 all rights reserved.

THE DOCUMENT WAS PRODUCED WITH THE FOLLOWING SECURITY MEASURES: SPECIAL DOCUMENT PAPER, INK SCREENS, WATERMARK BACKGROUND DESIGNS HOLOGRAM AND OTHER SECURITY FEATURES NOT LISTED AND DO EXCEED DOCUMENT SECURITY INDUSTRY GUIDELINES

IGI LABORATORY GROWN DIAMOND GRADING REPORT

05/28/2020

IGI Report Number LG425048547

Shape and Cutting Style ROUND BRILLIANT

Measurements 8.22 - 8.26 X 5.09 MM

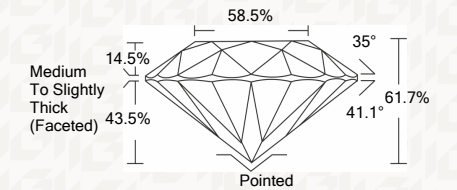
GRADING RESULTS

Carat Weight 2.13 CARATS

Color Grade E

Clarity Grade VS 1

Cut Grade IDEAL



ADDITIONAL GRADING INFORMATION

Polish EXCELLENT

Symmetry EXCELLENT

Fluorescence NONE

Inscription(s) LABGROWN IGI LG425048547

Comments: This Laboratory grown diamond was created by chemical vapor deposition process (CVD) Type IIa, No indications of post growth treatment.



IGI

05/28/2020 IGI Report No. LG425048547 ROUND BRILLIANT 8.22 - 8.26 X 5.09 MM Carat Weight 2.13 CARATS Color Grade E VS 1 IDEAL 61.7% 58.5% Medium To Slightly Thick (Faceted) Polished EXCELLENT EXCELLENT NONE LABGROWN IGI LG425048547 Comments: This Laboratory grown diamond was created by chemical vapor deposition process (CVD) Type IIa, No indications of post growth treatment.