



IGI GEMOLOGICAL REPORT

IGI LABORATORY GROWN DIAMOND GRADING REPORT

08/10/2020 IGI Report Number LG432015227

Shape and Cutting Style ROUND BRILLIANT

Measurements 8.73 - 8.77 X 5.44 MM

GRADING RESULTS

Carat Weight 2.56 CARATS

Color Grade F

Clarity Grade VS 1

Cut Grade IDEAL

ADDITIONAL GRADING INFORMATION

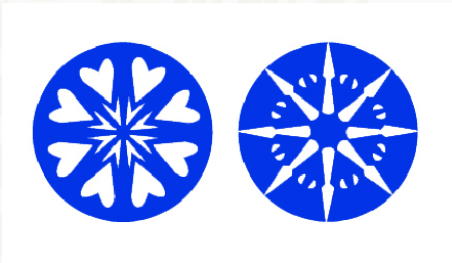
Polish EXCELLENT

Symmetry EXCELLENT

Fluorescence NONE

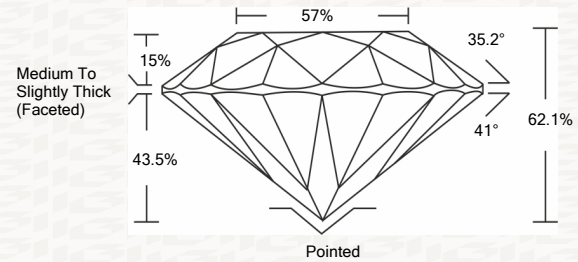
Inscription(s) LABGROWN IGI LG432015227

Comments: HEARTS & ARROWS This Laboratory grown diamond was created by chemical vapor deposition process (CVD) Type IIa, No indications of post growth treatment.

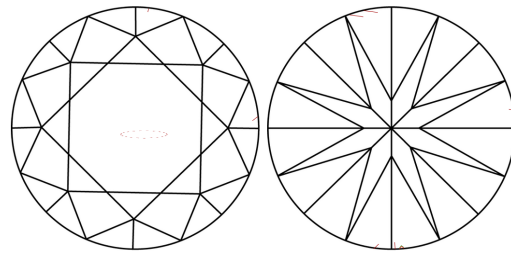


ADDITIONAL INFORMATION

PROPORTIONS



CLARITY CHARACTERISTICS



KEY TO SYMBOLS

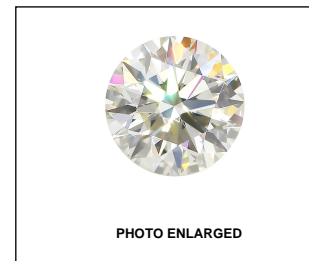
Red symbols indicate internal characteristics. Green symbols indicate external characteristics.

This Report is subject to the terms and conditions © IGI 2000, edition 2019 all rights reserved.

GRADING SCALES

Table with 2 rows and 5 columns showing grading scales for Color (CL) and Clarity (10x) across various categories like Colorless, Near Colorless, Faint, Very Light, and Light.

The laboratory grown diamond described in this Report (Report) has been graded, tested, analyzed, examined and/or inscribed by International Gemological Institute (IGI). A laboratory grown diamond is one that has essentially the same chemical, physical and optical properties as a mined diamond...



LASERSCRIBE SM



IGI LABORATORY GROWN DIAMOND GRADING REPORT

08/10/2020 IGI Report Number LG432015227

Shape and Cutting Style ROUND BRILLIANT

Measurements 8.73 - 8.77 X 5.44 MM

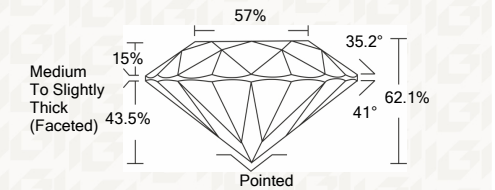
GRADING RESULTS

Carat Weight 2.56 CARATS

Color Grade F

Clarity Grade VS 1

Cut Grade IDEAL



ADDITIONAL GRADING INFORMATION

Polish EXCELLENT

Symmetry EXCELLENT

Fluorescence NONE

Inscription(s) LABGROWN IGI LG432015227

Comments: HEARTS & ARROWS This Laboratory grown diamond was created by chemical vapor deposition process (CVD) Type IIa, No indications of post growth treatment.



IGI

THE DOCUMENT WAS PRODUCED WITH THE FOLLOWING SECURITY MEASURES: SPECIAL DOCUMENT PAPER, INK SCREENS, WATERMARK BACKGROUND DESIGNS HOLOGRAM AND OTHER SECURITY FEATURES NOT LISTED AND DO EXCEED DOCUMENT SECURITY INDUSTRY GUIDELINES

08/10/2020 IGI Report No. LG432015227 ROUND BRILLIANT 8.73 - 8.77 X 5.44 MM 2.56 CARATS F VS 1 IDEAL 62.1% 57% Medium To Slightly Thick (Faceted) EXCELLENT EXCELLENT NONE LABGROWN IGI LG432015227 Comments: HEARTS & ARROWS This Laboratory grown diamond was created by chemical vapor deposition process (CVD) Type IIa, No indications of post growth treatment.