



INTERNATIONAL
GEMOLOGICAL
INSTITUTE

ELECTRONIC COPY

LG432019765

LABORATORY GROWN DIAMOND REPORT

EDUCATIONAL AND SCIENTIFIC LABORATORY
FOR THE IDENTIFICATION AND GRADING
OF DIAMONDS AND COLORED STONES

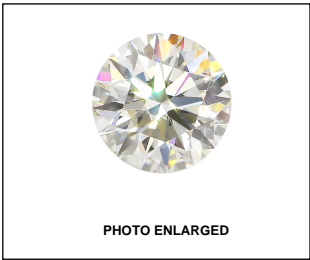
GRADING SCALES

| COLOR GRADING SCALE | CL | NC | FT | VLT | LT |
|-----------------------------------|------------------------------------|-----------------------------------|------------------------------|----------------------|--------------|
| | COLORLESS D-F | NEAR COLORLESS G-J | FAINT K-M | VERY LIGHT N-R | LIGHT S-Z |
| CLARITY (10x) GRADING SCALE | FL | IF | VVS | VS | SI |
| | FLAWLESS INTERNALLY FLAWLESS | VERY VERY SLIGHTLY INCLUDED | VERY SLIGHTLY INCLUDED | SLIGHTLY INCLUDED | INCLUDED |

The laboratory grown diamond described in this Report ("Report") has been graded, tested, analyzed, examined and/or inscribed by International Gemological Institute (IGI). A laboratory grown diamond is one that has essentially the same chemical, physical and optical properties as a mined diamond, with the exception of being grown by man (a manufactured product). IGI employs and utilizes those techniques and equipment currently available to IGI, including, without limitation, 10X magnification, corrected triplet loupe, binocular microscope, master color comparison stones, non-contact-optical measuring device, Diamond Sure™, Diamond View™, Spectrophotometer and such other instruments and/or processes as deemed appropriate by IGI. This Report includes advanced security features. A duly accredited gemologist or jeweler can advise you with respect to the importance of and interrelationship between cut, color, clarity and carat weight.

THIS REPORT IS NEITHER A GUARANTEE, VALUATION, NOR APPRAISAL OF THE GEMSTONE DESCRIBED HEREIN. PLEASE REVIEW THE LIMITATIONS AND RESTRICTIONS SET FORTH ONLINE. FOR ADDITIONAL INFORMATION, IMPORTANT LIMITATIONS AND DISCLAIMERS, PLEASE GO TO WWW.IGI.ORG OR CALL 1-888-BUY-IGI.

© INTERNATIONAL GEMOLOGICAL INSTITUTE, INC.

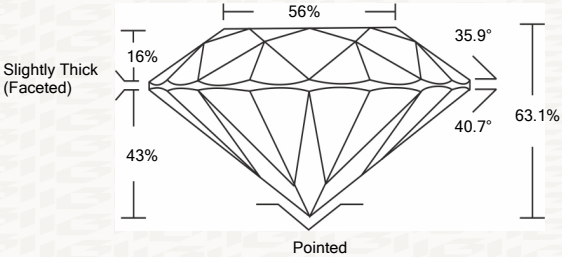


LASERSCRIBE SM

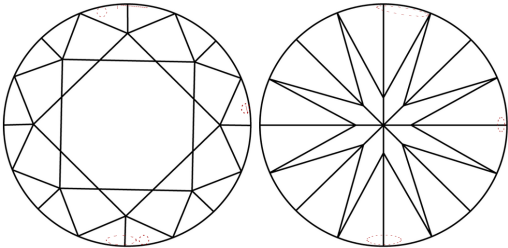


ADDITIONAL INFORMATION

PROPORTIONS

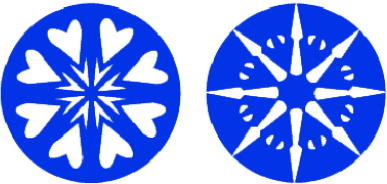


CLARITY CHARACTERISTICS



KEY TO SYMBOLS

Red symbols indicate internal characteristics.
Green symbols indicate external characteristics.



This Report is subject to the terms and conditions

© IGI 2000, edition 2019 all rights reserved.

IGI LABORATORY GROWN DIAMOND GRADING REPORT

08/10/2020

IGI Report Number **LG432019765**

Shape and Cutting Style **ROUND BRILLIANT**

Measurements **9.16 - 9.18 X 5.79 MM**

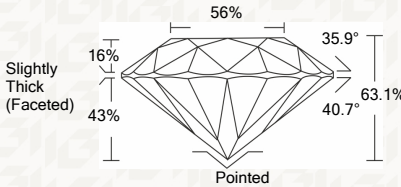
GRADING RESULTS

Carat Weight **3.04 CARATS**

Color Grade **F**

Clarity Grade **VS 2**

Cut Grade **EXCELLENT**



ADDITIONAL GRADING INFORMATION

Polish **EXCELLENT**

Symmetry **EXCELLENT**

Fluorescence **NONE**

Inscription(s) **LABGROWN IGI LG432019765**

Comments: HEARTS & ARROWS

This Laboratory grown diamond was created by chemical vapor deposition process (CVD)
Type IIa, No indications of post growth treatment.



IGI

| | | | | | | | | | | | | | | | | |
|------------|---------------------------|-----------------|-----------------------|-------------|---|------|-----------|-------|-----|--------------------------|----------|-----------|-----------|------|--------------------------|---|
| 08/10/2020 | IGI Report No LG432019765 | ROUND BRILLIANT | 9.16 - 9.18 X 5.79 MM | 3.04 CARATS | F | VS 2 | EXCELLENT | 63.1% | 56% | Slightly Thick (Faceted) | Polished | EXCELLENT | EXCELLENT | NONE | LABGROWN IGI LG432019765 | Comments: HEARTS & ARROWS This Laboratory grown diamond was created by chemical vapor deposition process (CVD) Type IIa, No indications of post growth treatment. |
|------------|---------------------------|-----------------|-----------------------|-------------|---|------|-----------|-------|-----|--------------------------|----------|-----------|-----------|------|--------------------------|---|



THE DOCUMENT WAS PRODUCED WITH THE FOLLOWING SECURITY MEASURES: SPECIAL DOCUMENT PAPER, INK SCREENS, WATERMARK BACKGROUND DESIGNS HOLOGRAM AND OTHER SECURITY FEATURES NOT LISTED AND DO EXCEED DOCUMENT SECURITY INDUSTRY GUIDELINES