

LG440015263

October 18, 2020  
IGI Report Number **LG440015263**  
Shape and Cutting Style **ROUND BRILLIANT**

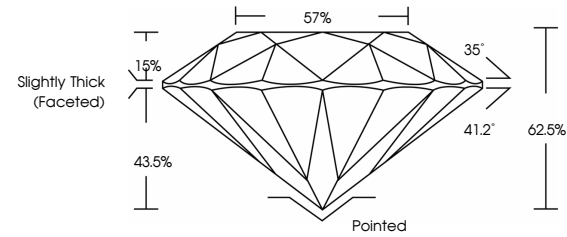
Measurements **6.95 - 6.97 X 4.36 MM**

**GRADING RESULTS**  
Carat Weight **1.30 Carat**  
Color Grade **E**  
Clarity Grade **VVS 2**  
Cut Grade **IDEAL**

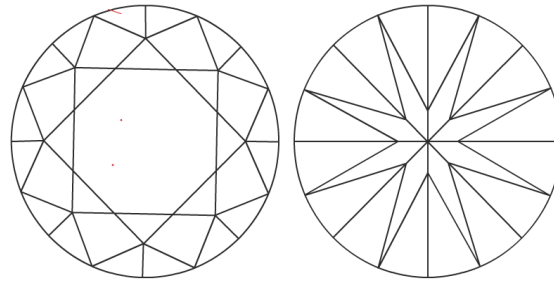
**ADDITIONAL GRADING INFORMATION**  
Polish **EXCELLENT**  
Symmetry **EXCELLENT**  
Fluorescence **NONE**  
Inscription(s) **LABGROWN IGI LG440015263**

Comments: No indications of post growth treatment

**PROPORTIONS**



**CLARITY CHARACTERISTICS**

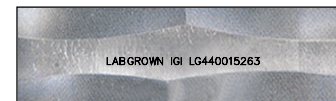


**KEY TO SYMBOLS**

Red symbols indicate internal characteristics.  
Green symbols indicate external characteristics.



PHOTO ENLARGED



LASERSCRIBE <sup>SM</sup>



The laboratory grown diamond described in this Report ("Report") has been graded, tested, analyzed, examined and/or inscribed by International Gemological Institute (IGI). A laboratory grown diamond is one that has essentially the same chemical, physical and optical properties as a mined diamond, with the exception of being grown by man (a manufactured product). This is a manufactured (man-made) diamond produced by CVD (chemical vapor deposition) or by HPHT (high pressure high temperature) growth processes and may include post-growth treatments to alter the color. IGI employs and utilizes those techniques and equipment currently available to IGI, including, without limitation, 10X magnification, corrected triplet loupe, binocular microscope, master color comparison stones, non-contact-optical measuring device, Spectrophotometer and such other instruments and/or processes as deemed appropriate by IGI. In the case where diamond melee is set in a mounting, a random testing procedure, regarding the diamonds being of natural or laboratory created origin will be performed. This Report includes advanced security features. A duly accredited gemologist or jeweler can advise you with respect to the importance of and interrelationship between cut, color, clarity and carat weight.

**THIS REPORT IS NEITHER A GUARANTEE, VALUATION, NOR APPRAISAL OF THE GEMSTONE DESCRIBED HEREIN. PLEASE REVIEW THE LIMITATIONS AND RESTRICTIONS SET FORTH ONLINE. FOR ADDITIONAL INFORMATION, IMPORTANT LIMITATIONS AND DISCLAIMERS, PLEASE GO TO WWW.IGI.ORG/TERMS.HTML OR CALL 1-888-BUY-IGIS.**

© INTERNATIONAL GEMOLOGICAL INSTITUTE, INC.

