



IGI GEMOLOGICAL REPORT

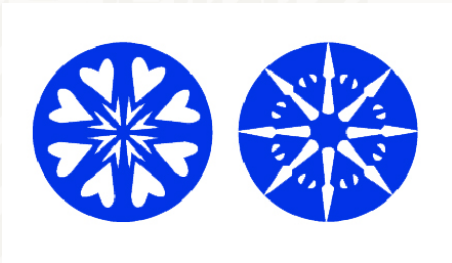
IGI LABORATORY GROWN DIAMOND GRADING REPORT

09/21/2020
IGI Report Number LG442053379
Shape and Cutting Style ROUND BRILLIANT
Measurements 8.61 - 8.64 X 5.28 MM
GRADING RESULTS
Carat Weight 2.40 CARATS
Color Grade D
Clarity Grade VS 1
Cut Grade IDEAL

ADDITIONAL GRADING INFORMATION

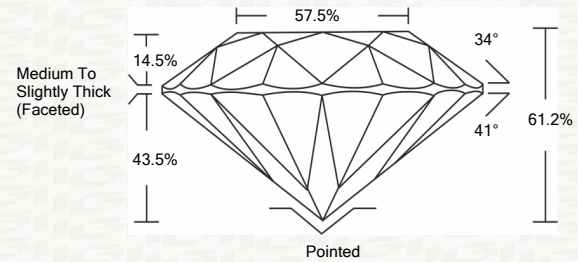
Polish EXCELLENT
Symmetry EXCELLENT
Fluorescence NONE
Inscription(s) LABGROWN IGI LG442053379

Comments: HEARTS & ARROWS
This Laboratory grown diamond was created by chemical vapor deposition process (CVD)
Type IIa, No indications of post growth treatment.

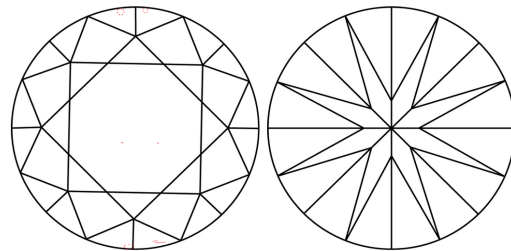


ADDITIONAL INFORMATION

PROPORTIONS



CLARITY CHARACTERISTICS



KEY TO SYMBOLS

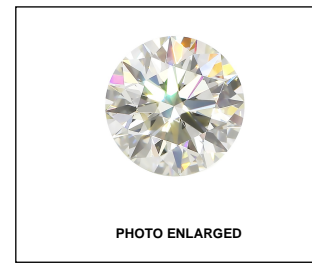
Red symbols indicate internal characteristics.
Green symbols indicate external characteristics.

This Report is subject to the terms and conditions
© IGI 2000, edition 2019 all rights reserved.

GRADING SCALES

Table with 2 rows and 5 columns showing grading scales for Color (CL) and Clarity (10x) across categories like Colorless, Near Colorless, Faint, Very Light, and Light.

The laboratory grown diamond described in this Report (Report) has been graded, tested, analyzed, examined and/or inscribed by International Gemological Institute (IGI). A laboratory grown diamond is one that has essentially the same chemical, physical and optical properties as a mined diamond...

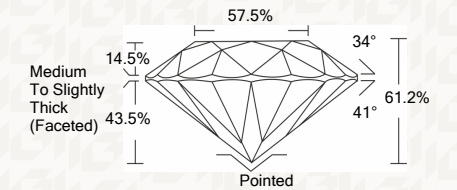


LASERSCRIBE SM



IGI LABORATORY GROWN DIAMOND GRADING REPORT

09/21/2020
IGI Report Number LG442053379
Shape and Cutting Style ROUND BRILLIANT
Measurements 8.61 - 8.64 X 5.28 MM
GRADING RESULTS
Carat Weight 2.40 CARATS
Color Grade D
Clarity Grade VS 1
Cut Grade IDEAL



ADDITIONAL GRADING INFORMATION

Polish EXCELLENT
Symmetry EXCELLENT
Fluorescence NONE
Inscription(s) LABGROWN IGI LG442053379

Comments: HEARTS & ARROWS
This Laboratory grown diamond was created by chemical vapor deposition process (CVD)
Type IIa, No indications of post growth treatment.



IGI

09/21/2020
IGI Report No. LG442053379
ROUND BRILLIANT
8.61 - 8.64 X 5.28 MM
Carat Weight 2.40 CARATS
Color Grade D
Clarity Grade VS 1
Cut Grade IDEAL
Depth 61.2%
Table 57.5%
Medium To Slightly Thick (Faceted)
Polish EXCELLENT
Symmetry EXCELLENT
Fluorescence NONE
Inscription(s) LABGROWN IGI LG442053379
Comments: HEARTS & ARROWS
This Laboratory grown diamond was created by chemical vapor deposition process (CVD)
Type IIa, No indications of post growth treatment.

THE DOCUMENT WAS PRODUCED WITH THE FOLLOWING SECURITY MEASURES: SPECIAL DOCUMENT PAPER, INK SCREENS, WATERMARK BACKGROUND DESIGNS HOLOGRAM AND OTHER SECURITY FEATURES NOT LISTED AND DO EXCEED DOCUMENT SECURITY INDUSTRY GUIDELINES