



01/16/2021	
IGI Report Number	LG445057526
Shape and Cutting Style	OVAL BRILLIANT
Measurements	9.61 x 6.82 x 4.21 mm
GRADING RESULTS	
Carat Weight	1.72 CARAT
Color Grade	I
Clarity Grade	VVS 1
ADDITIONAL GRADING INFORMATION	
Polish	EXCELLENT
Symmetry	EXCELLENT
Fluorescence	NONE
Inscription(s)	LABGROWN IGI LG445057526



LG445057526

Diagram illustrating the cross-section of a diamond-shaped object, showing dimensions and features:

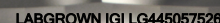
- Top width: 58.5%
- Height: 61.7%
- Bottom width: 43.5%
- Left width: 14.5%
- Left side feature: Slightly Thick To Thick (Faceted)
- Bottom feature: Pointed

Red symbols indicate internal characteristics.
Green symbols indicate external characteristics.

LABORATORY GROWN DIAMOND REPORT

COLOR GRADING SCALE	CL		NC		FT		VLT		LT	
	COLORLESS D-F		NEAR COLORLESS G-J		FAINT K-M		VERY LIGHT N-R		LIGHT S-Z	
CLARITY (10x) GRADING SCALE	FL	IF	VVS		VS		SI		I	
	FLAWLESS INTERNALLY FLAWLESS		VERY VERY SLIGHTLY INCLUDED		VERY SLIGHTLY INCLUDED		SLIGHTLY INCLUDED		INCLUDED	

© INTERNATIONAL GEMOLOGICAL INSTITUTE, INC.

LASERSCRIBESM

FD - 10 20

THIS DOCUMENT WAS PRODUCED WITH THE FOLLOWING SECURITY MEASURES: SPECIAL DOCUMENT PAPER, INK SCREENS, WATERMARK BACKGROUND DESIGNS, HOLOGRAM AND OTHER SECURITY FEATURES NOT LISTED AND DO EXCEED DOCUMENT SECURITY INDUSTRY GUIDELINES

ADDITIONAL GRADING INFORMATION	
Polish	EXCELLENT
Symmetry	EXCELLENT
Fluorescence	NONE
Inscription(s)	LABGROWN IGI LG445057526

Comments: This Laboratory Grown Diamond was created by Chemical Vapor Deposition (CVD) growth process.
Type IIa



1.72 CARAT	1	VS 1	61.7%	58.5%	Slightly Thick To Thick (Feared)	Pointed	EXCELLENT	NONE	LARGE DOWN (R) LW40607328
1.81 x 6.82 x 4.21 mm	Carat Weight	Clarity Grade	Depth	Table	Circle	Culet	Polish	Fluorescence	
OVAL BRILLIANT	Color Grade						Symmetry	Inscriptions(s)	
The Laboratory Grown Diamond was created by Chemical Vapor Deposition (CVD) growth process.									

This Laboratory Grown Diamond was created by Chemical Vapor Deposition (CVD) growth process.