



LABORATORY GROWN DIAMOND REPORT

LG459114998

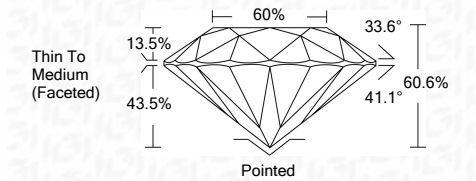
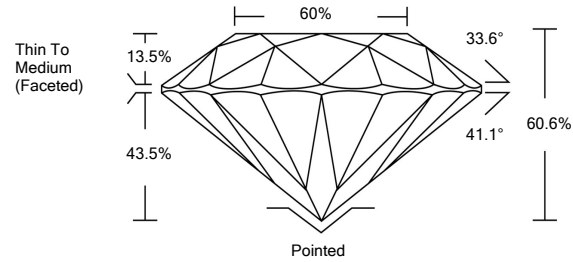
GRADING SCALES

Table with 5 columns for Color Grading Scale (CL, NC, FT, VLT, LT) and Clarity (10x) Grading Scale (FL, IF, VVS, VS, SI, I). Includes sub-labels like 'COLORLESS D-F', 'NEAR COLORLESS G-J', etc.

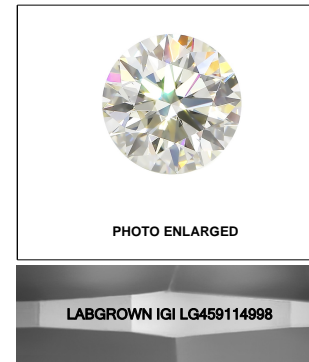
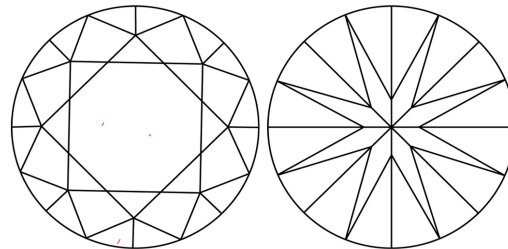
The laboratory grown diamond described in this Report (Report) has been graded, tested, analyzed, examined and/or inscribed by International Gemological Institute (IGI). A laboratory grown diamond is one that has essentially the same chemical, physical and optical properties as a mined diamond...

03/17/2021 IGI Report Number LG459114998 Shape and Cutting Style ROUND BRILLIANT Measurements 7.54 - 7.60 x 4.59 mm GRADING RESULTS Carat Weight 1.61 CARAT Color Grade G Clarity Grade VVS 2 Cut Grade EXCELLENT

PROPORTIONS



CLARITY CHARACTERISTICS



LASERSCRIBE<sup>SM</sup>

KEY TO SYMBOLS

Red symbols indicate internal characteristics. Green symbols indicate external characteristics.

ADDITIONAL GRADING INFORMATION

Polish EXCELLENT Symmetry EXCELLENT Fluorescence NONE Inscription(s) LABGROWN IGI LG459114998

Comments: This Laboratory Grown Diamond was created by Chemical Vapor Deposition (CVD) growth process and may include post-growth treatment. Type IIa

03/17/2021 IGI Report Number LG459114998 Shape and Cutting Style ROUND BRILLIANT Measurements 7.54 - 7.60 x 4.59 mm

GRADING RESULTS

Carat Weight 1.61 CARAT Color Grade G Clarity Grade VVS 2 Cut Grade EXCELLENT

ADDITIONAL GRADING INFORMATION

Polish EXCELLENT Symmetry EXCELLENT Fluorescence NONE Inscription(s) LABGROWN IGI LG459114998

Comments: This Laboratory Grown Diamond was created by Chemical Vapor Deposition (CVD) growth process and may include post-growth treatment. Type IIa



IGI

03/17/2021 IGI Report No. LG459114998 ROUND BRILLIANT 7.54 - 7.60 x 4.59 mm 1.61 CARAT G VVS 2 EXCELLENT 60.6% 60% Thin To Medium (Faceted) Pointed EXCELLENT EXCELLENT NONE LABGROWN IGI LG459114998