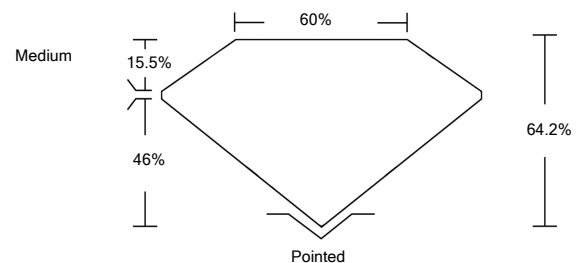




LABORATORY GROWN DIAMOND REPORT

LG470152744

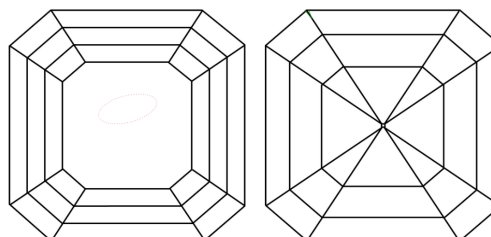
PROPORTIONS



GRADING SCALES

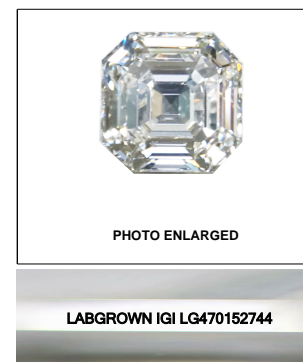
COLOR GRADING SCALE	CL	NC	FT	VL	LT	
	COLORLESS D-F	NEAR COLORLESS G-J	FAINT K-M	VERY LIGHT N-R	LIGHT S-Z	
CLARITY (10x) GRADING SCALE	FL	IF	VVS	VS	SI	I
	FLAWLESS INTERNALLY FLAWLESS	VERY VERY SLIGHTLY INCLUDED	VERY SLIGHTLY INCLUDED	SLIGHTLY INCLUDED	INCLUDED	INCLUDED

CLARITY CHARACTERISTICS



KEY TO SYMBOLS

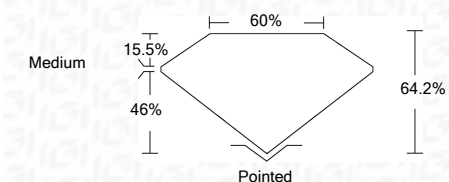
Red symbols indicate internal characteristics.
Green symbols indicate external characteristics.



LABGROWN IGI LG470152744

LASERSCRIBESM

04/21/2021
IGI Report Number **LG470152744**
Shape and Cutting Style **SQUARE EMERALD CUT**
Measurements **6.12 x 6.11 x 3.92 mm**
GRADING RESULTS
Carat Weight **1.26 CARAT**
Color Grade **F**
Clarity Grade **VVS 2**



ADDITIONAL GRADING INFORMATION
Polish **EXCELLENT**
Symmetry **EXCELLENT**
Fluorescence **NONE**
Inscription(s) **LABGROWN IGI LG470152744**

Comments: As Grown - No indication of post-growth treatment
This Laboratory Grown Diamond was created by Chemical Vapor Deposition (CVD) growth process
Type IIa

04/21/2021
IGI Report Number **LG470152744**
Shape and Cutting Style **SQUARE EMERALD CUT**
Measurements **6.12 x 6.11 x 3.92 mm**

GRADING RESULTS
Carat Weight **1.26 CARAT**
Color Grade **F**
Clarity Grade **VVS 2**

ADDITIONAL GRADING INFORMATION
Polish **EXCELLENT**
Symmetry **EXCELLENT**
Fluorescence **NONE**
Inscription(s) **LABGROWN IGI LG470152744**

Comments: As Grown - No indication of post-growth treatment
This Laboratory Grown Diamond was created by Chemical Vapor Deposition (CVD) growth process
Type IIa



IGI

04/21/2021
IGI Report No. **LG470152744**
SQUARE EMERALD CUT
Carat Weight **1.26 CARAT**
Color Grade **F**
Clarity Grade **VVS 2**
Depth **64.2%**
Table **60%**
Girdle **Medium**
Culet **Pointed**
Polish **EXCELLENT**
Symmetry **EXCELLENT**
Fluorescence **NONE**
Inscription(s) **LABGROWN IGI LG470152744**
Comments:
As Grown - No indication of post-growth treatment
This Laboratory Grown Diamond was created by Chemical Vapor Deposition (CVD) growth process
Type IIa