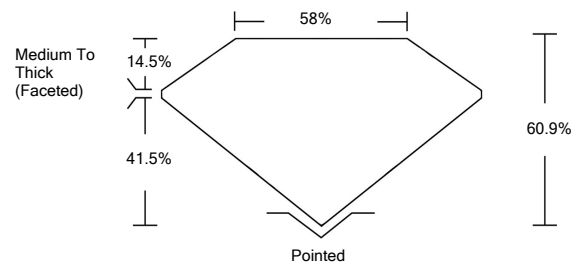




LABORATORY GROWN DIAMOND REPORT

LG476163249

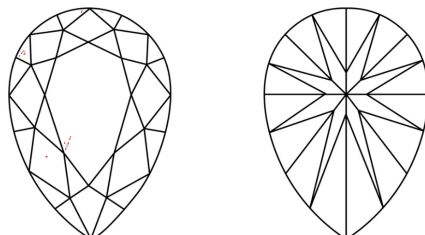
PROPORTIONS



GRADING SCALES

COLOR GRADING SCALE	CL	NC	FT	VL	LT	
	COLORLESS D-F	NEAR COLORLESS G-J	FAINT K-M	VERY LIGHT N-R	LIGHT S-Z	
CLARITY (10x) GRADING SCALE	FL	IF	VVS	VS	SI	I
	FLAWLESS INTERNALLY FLAWLESS	VERY VERY SLIGHTLY INCLUDED	VERY SLIGHTLY INCLUDED	SLIGHTLY INCLUDED	INCLUDED	INCLUDED

CLARITY CHARACTERISTICS



KEY TO SYMBOLS

Red symbols indicate internal characteristics.
Green symbols indicate external characteristics.

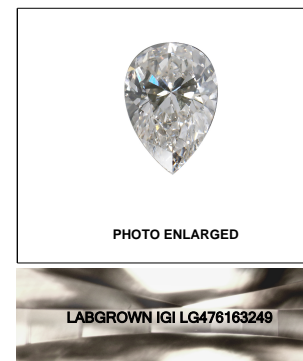


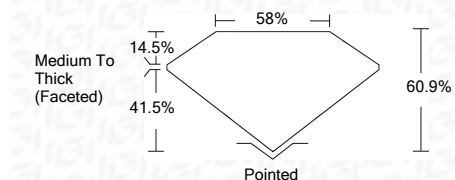
PHOTO ENLARGED
LASERSCRIBESM

06/04/2021

IGI Report Number **LG476163249**
Shape and Cutting Style **PEAR BRILLIANT**
Measurements **9.79 x 6.16 x 3.75 mm**

GRADING RESULTS

Carat Weight **1.36 CARAT**
Color Grade **G**
Clarity Grade **VS 2**



ADDITIONAL GRADING INFORMATION

Polish **EXCELLENT**
Symmetry **EXCELLENT**
Fluorescence **NONE**
Inscription(s) **LABGROWN IGI LG476163249**

Comments: As Grown - No indication of post-growth treatment
This Laboratory Grown Diamond was created by High Pressure High Temperature (HPHT) growth process Type II



06/04/2021
IGI Report No. LG476163249
PEAR BRILLIANT
9.79 x 6.16 x 3.75 mm
1.36 CARAT
G
VS 2
60.9%
58%
Medium To Thick (Faceted)
Pointed
EXCELLENT
EXCELLENT
NONE
LABGROWN IGI LG476163249

As Grown - No indication of post-growth treatment
This Laboratory Grown Diamond was created by High Pressure High Temperature (HPHT) growth process Type II

06/04/2021
IGI Report Number **LG476163249**

Shape and Cutting Style **PEAR BRILLIANT**
Measurements **9.79 x 6.16 x 3.75 mm**

GRADING RESULTS

Carat Weight **1.36 CARAT**
Color Grade **G**
Clarity Grade **VS 2**

ADDITIONAL GRADING INFORMATION

Polish **EXCELLENT**
Symmetry **EXCELLENT**
Fluorescence **NONE**
Inscription(s) **LABGROWN IGI LG476163249**

Comments: As Grown - No indication of post-growth treatment
This Laboratory Grown Diamond was created by High Pressure High Temperature (HPHT) growth process Type II

