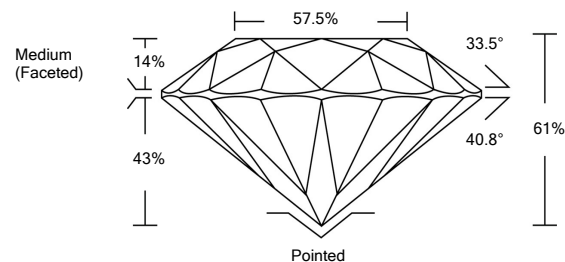




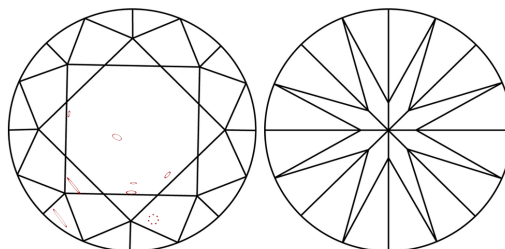
LG476186488

LABORATORY GROWN DIAMOND REPORT

PROPORTIONS



CLARITY CHARACTERISTICS



KEY TO SYMBOLS

Red symbols indicate internal characteristics.
Green symbols indicate external characteristics.

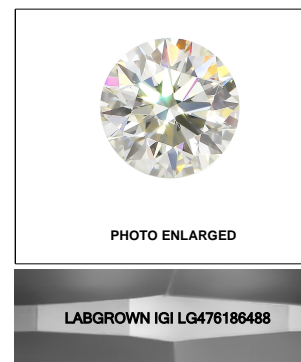
GRADING SCALES

COLOR GRADING SCALE	CL	NC	FT	VL	LT	
	COLORLESS D-F	NEAR COLORLESS G-J	FAINT K-M	VERY LIGHT N-R	LIGHT S-Z	
CLARITY (10x) GRADING SCALE	FL	IF	VVS	VS	SI	I
	FLAWLESS INTERNALLY FLAWLESS	VERY VERY SLIGHTLY INCLUDED	VERY SLIGHTLY INCLUDED	SLIGHTLY INCLUDED	INCLUDED	INCLUDED

The laboratory grown diamond described in this Report (Report) has been graded, tested, analyzed, examined and/or inscribed by International Gemological Institute (IGI). A laboratory grown diamond is one that has essentially the same chemical, physical and optical properties as a mined diamond, with the exception of being grown by man (a manufactured product). IGI employs and utilizes those techniques and equipment currently available to IGI, including, without limitation, 10X magnification, corrected triplet loupe, binocular microscope, master color comparison stones, non-contact-optical measuring device, Diamond Sure™, Diamond View™, Spectrophotometer and such other instruments and/or processes as deemed appropriate by IGI. This Report includes advanced security features. A duly accredited gemologist or jeweler can advise you with respect to the importance of and interrelationship between cut, color, clarity and carat weight.

THIS REPORT IS NEITHER A GUARANTEE, VALUATION, NOR APPRAISAL OF THE GEMSTONE DESCRIBED HEREIN. PLEASE REVIEW THE LIMITATIONS AND RESTRICTIONS SET FORTH ONLINE. FOR ADDITIONAL INFORMATION, IMPORTANT LIMITATIONS AND DISCLAIMERS, PLEASE GO TO WWW.IGI.ORG OR CALL 1-888-BUY-IGIS.

© INTERNATIONAL GEMOLOGICAL INSTITUTE, INC.



LASERSCRIBESM

05/22/2021

IGI Report Number **LG476186488**

Shape and Cutting Style **ROUND BRILLIANT**

Measurements **9.42 - 9.47 x 5.76 mm**

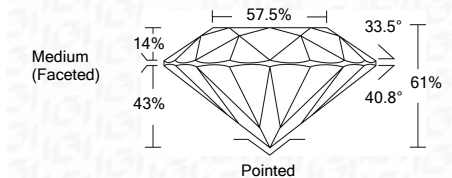
GRADING RESULTS

Carat Weight **3.16 CARATS**

Color Grade **D**

Clarity Grade **SI 1**

Cut Grade **IDEAL**



ADDITIONAL GRADING INFORMATION

Polish **EXCELLENT**

Symmetry **EXCELLENT**

Fluorescence **NONE**

Inscription(s) **LABGROWN IGI LG476186488**

Comments: As Grown - No indication of post-growth treatment.
This Laboratory Grown Diamond was created by High Pressure High Temperature (HPHT) growth process.
Type II



IGI

05/22/2021	IGI Report No. LG476186488	3.16 CARATS	D	Polished
IGI Report No. LG476186488	ROUND BRILLIANT	9.42 - 9.47 x 5.76 mm	SI 1	EXCELLENT
Carat Weight	Color Grade	Cut Grade	Depth	EXCELLENT
3.16 CARATS	D	IDEAL	61%	EXCELLENT
Color Grade	Clarity Grade	Table	Grade	Medium (Faceted)
D	SI 1	57.5%		
Cut Grade	Symmetry	Culet	Polish	Pointed
IDEAL	EXCELLENT	None	EXCELLENT	EXCELLENT
Fluorescence	Inscription(s)	Symmetry	Fluorescence	NONE
NONE	LABGROWN IGI LG476186488	EXCELLENT	EXCELLENT	LABGROWN IGI LG476186488
Inscription(s)	Comments:			
LABGROWN IGI LG476186488	As Grown - No indication of post-growth treatment.			
	This Laboratory Grown Diamond was created by High Pressure High Temperature (HPHT) growth process.			
	Type II			