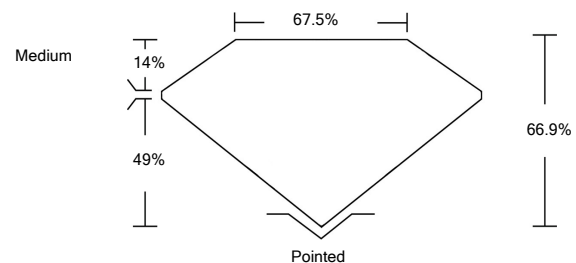




**LABORATORY GROWN DIAMOND REPORT**

LG478102733

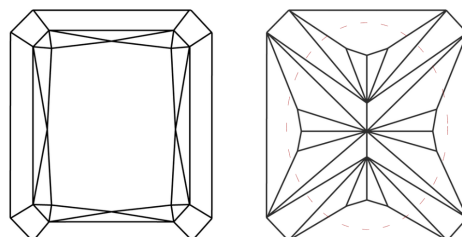
**PROPORTIONS**



**GRADING SCALES**

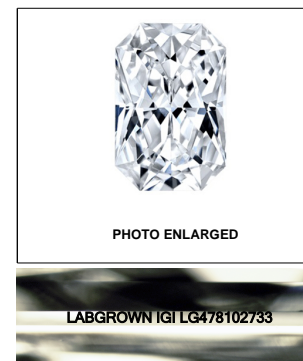
COLOR GRADING SCALE	CL	NC	FT	VL	LT	
	COLORLESS D-F	NEAR COLORLESS G-J	FAINT K-M	VERY LIGHT N-R	LIGHT S-Z	
CLARITY (10x) GRADING SCALE	FL	IF	VVS	VS	SI	I
	FLAWLESS INTERNALLY FLAWLESS	VERY VERY SLIGHTLY INCLUDED	VERY SLIGHTLY INCLUDED	SLIGHTLY INCLUDED	INCLUDED	INCLUDED

**CLARITY CHARACTERISTICS**



**KEY TO SYMBOLS**

Red symbols indicate internal characteristics.  
Green symbols indicate external characteristics.



LABGROWN IGI LG478102733

LASERSCRIBE<sup>SM</sup>

06/09/2021

IGI Report Number

**LG478102733**

Shape and Cutting Style

**CUT CORNERED  
RECTANGULAR MODIFIED  
BRILLIANT**

Measurements

**8.15 x 6.25 x 4.18 mm**

**GRADING RESULTS**

Carat Weight

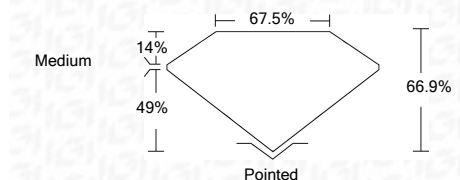
**1.80 CARAT**

Color Grade

**E**

Clarity Grade

**VVS 2**



**ADDITIONAL GRADING INFORMATION**

Polish

**EXCELLENT**

Symmetry

**EXCELLENT**

Fluorescence

**NONE**

Inscription(s)

**LABGROWN IGI LG478102733**

Comments: As Grown - No indication of post-growth treatment

This Laboratory Grown Diamond was created by Chemical Vapor Deposition (CVD) process  
Type IIa



**IGI**



06/09/2021  
IGI Report No. LG478102733  
**CUT CORNERED RECT. MODIFIED  
BRILLIANT**  
8.15 x 6.25 x 4.18 mm  
Carat Weight 1.80 CARAT  
Color Grade E  
Clarity Grade VVS 2  
Depth 66.9%  
Table 67.5%  
Girdle Medium  
Culet Pointed  
Polish EXCELLENT  
Symmetry EXCELLENT  
Fluorescence NONE  
Inscription(s) LABGROWN IGI  
LG478102733  
Comments:

As Grown - No indication of post-growth treatment  
This Laboratory Grown Diamond was created by Chemical Vapor Deposition (CVD) process  
Type IIa