



**INTERNATIONAL  
GEMOLOGICAL  
INSTITUTE**

**ELECTRONIC COPY**

**LABORATORY GROWN DIAMOND REPORT**

**LG478127353**

**IGI LABORATORY GROWN  
DIAMOND ID REPORT**

June 28, 2022  
IGI Report Number **LG478127353**  
**OVAL BRILLIANT**  
**10.69 X 7.71 X 4.77 MM**  
Carat Weight 2.40 CARATS  
Color Grade E  
Clarity Grade VVS 2  
Polish EXCELLENT  
Symmetry EXCELLENT  
Fluorescence NONE  
Inscription(s) LABGROWN IGI  
LG478127353

Comments: This Laboratory Grown Diamond was created by Chemical Vapor Deposition (CVD) growth process and may include post-growth treatment.

**LABORATORY GROWN DIAMOND REPORT**

**IGI LABORATORY GROWN DIAMOND IDENTIFICATION REPORT**

June 28, 2022  
IGI Report Number LG478127353  
Description LABORATORY GROWN DIAMOND  
Shape and Cutting Style **OVAL BRILLIANT**  
Measurements 10.69 X 7.71 X 4.77 MM

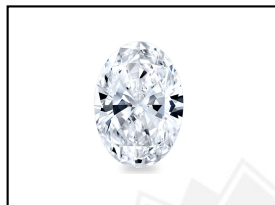
**GRADING RESULTS**

Carat Weight 2.40 CARATS  
Color Grade E  
Clarity Grade VVS 2

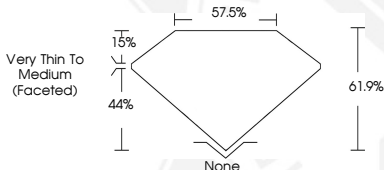
**ADDITIONAL GRADING INFORMATION**

Polish EXCELLENT  
Symmetry EXCELLENT  
Fluorescence NONE  
Inscription(s) LABGROWN IGI LG478127353

Comments: This Laboratory Grown Diamond was created by Chemical Vapor Deposition (CVD) growth process and may include post-growth treatment.



**LASERSCRIBE<sup>SM</sup>**  
Sample Images Used



**IGI LABORATORY GROWN  
DIAMOND ID REPORT**

June 28, 2022  
IGI Report Number **LG478127353**  
**OVAL BRILLIANT**  
**10.69 X 7.71 X 4.77 MM**  
Carat Weight 2.40 CARATS  
Color Grade E  
Clarity Grade VVS 2  
Polish EXCELLENT  
Symmetry EXCELLENT  
Fluorescence NONE  
Inscription(s) LABGROWN IGI  
LG478127353

Comments: This Laboratory Grown Diamond was created by Chemical Vapor Deposition (CVD) growth process and may include post-growth treatment.

THIS DOCUMENT WAS PRODUCED WITH THE FOLLOWING SECURITY MEASURES: SPECIAL DOCUMENT PAPER, INK SCREENS, WATERMARK, BACKGROUND DESIGN, HOLOGRAM AND OTHER SECURITY FEATURES NOT LISTED AND DO EXCEED DOCUMENT SECURITY INDUSTRY GUIDELINES.

For terms & conditions and to verify this report, please visit [www.igi.org](http://www.igi.org)