



ELECTRONIC COPY

LABORATORY GROWN DIAMOND REPORT

LABORATORY GROWN DIAMOND REPORT

LABORATORY GROWN DIAMOND REPORT

November 23, 2021

IGI Report Number **LG502117685**

Description	LABORATORY GROWN DIAMOND
Shape and Cutting Style	OVAL BRILLIANT

Measurements	10.37 X 7.60 X 4.73 MM
--------------	------------------------

GRADING RESULTS

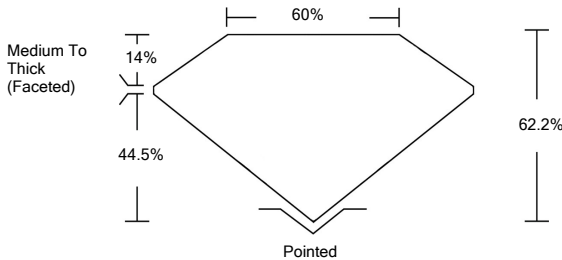
Carat Weight	2.33 CARATS
Color Grade	E
Clarity Grade	VS 2

ADDITIONAL GRADING INFORMATION

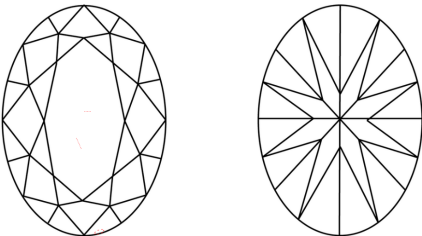
Polish	EXCELLENT
Symmetry	EXCELLENT
Fluorescence	NONE
Inscription(s)	LABGROWN IGI LG502117685

Comments: As Grown - No indication of post-growth treatment
This Laboratory Grown Diamond was created by Chemical
Vapor Deposition (CVD) growth process
Type IIa

PROPORTIONS



CLARITY CHARACTERISTICS



KEY TO SYMBOLS

Red symbols indicate internal characteristics.
Green symbols indicate external characteristics.

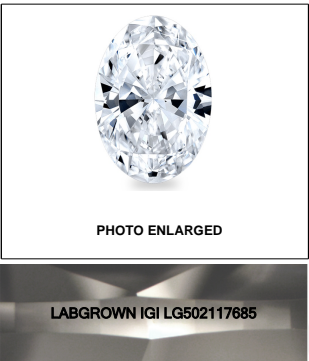
GRADING SCALES

COLOR GRADING SCALE	CL	NC	FT	VLT	LT
	COLORLESS D-F	NEAR COLORLESS G-J	FAINT K-M	VERY LIGHT N-R	LIGHT S-Z
CLARITY (10x) GRADING SCALE	FL	VVS	VS	SI	I
	FLAWLESS	VERY VERY SLIGHTLY INCLUDED	VERY SLIGHTLY INCLUDED	SLIGHTLY INCLUDED	INCLUDED

The laboratory grown diamond described in this Report ("Report") has been graded, tested, analyzed, examined and/or inscribed by International Gemological Institute ("IGI"). A laboratory grown diamond is one that has essentially the same chemical, physical and optical properties as a naturally occurring diamond except it was created by man (a manufactured product). IGI employs and utilizes those techniques and equipment currently available to IGI, including, without limitation, 10X magnification, corrected incident light, binocular microscope, master color comparison stones, non-contact infrared spectrometer, ultraviolet fluorescence examination, etc., and uses such other instruments and/or processes as deemed appropriate by IGI. This Report includes adequate security features. A duly accredited gemologist or jeweler can advise you with regard to the importance of and interrelationship between cut, color, clarity and carat weight.

THIS REPORT IS NEITHER A GUARANTEE, VALUATION, NOR APPRAISAL OF THE GEMSTONE DESCRIBED HEREIN. PLEASE REVIEW THE LIMITATIONS AND RESTRICTIONS SET FORTH ONLINE. FOR MORE INFORMATION REGARDING OUR POLICIES, CONDITIONS, TERMS AND DISCLAIMERS, PLEASE GO TO WWW.IGI.ORG OR CALL 1-888-BUY-IGI.

© INTERNATIONAL GEMOLOGICAL INSTITUTE, INC.

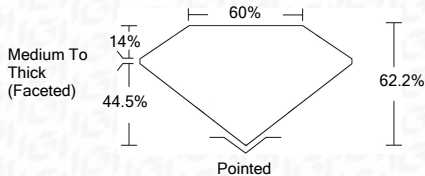
**LASERSCRIBESM**

© IGI 2020, International Gemological Institute

FD - 10 20

www.igi.org

November 23, 2021	
IGI Report Number	LG502117685
Description	LABORATORY GROWN DIAMOND
Shape and Cutting Style	OVAL BRILLIANT
Measurements	10.37 X 7.60 X 4.73 MM
GRADING RESULTS	
Carat Weight	2.33 CARAT(S)
Color Grade	E
Clarity Grade	VVS 2



ADDITIONAL GRADING INFORMATION

Polish	EXCELLENT
Symmetry	EXCELLENT
Fluorescence	NONE
Inscription(s)	LABGROWN IGI LG502117685

Comments: As Grown - No indication of post-growth treatment
This Laboratory Grown Diamond was created by Chemical Vapor Deposition (CVD) growth process
Type IIa



IGI

November 23, 2021	
IQV Report No LG892117685	
OVER BRILLIANT	
10.37 X 7.60 X 4.73 MM	2.33 CARATS
Carat Weight	E
Color Grade	VVS 2
Clarity Grade	62.2%
Depth	80%
Table	Medium To Thick (Faceted)
Girdle	Painted
Culet	EXCELLENT
Polish	EXCELLENT
Symmetry	NONE
Fluorescence	LARGEDOWN (GI)
Inscriptions(s)	LG892117685
Comments:	As Grown - No indication of post-growth treatment This Laboratory Grown Diamond was created by Chemical Vapor Deposition (CVD) growth process. Type IIa