

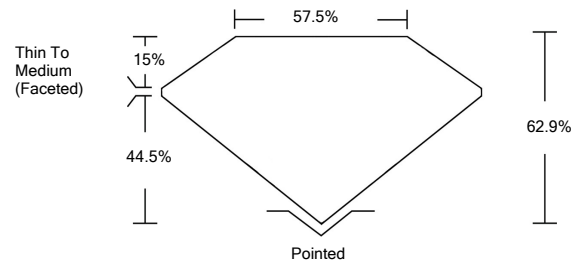


**INTERNATIONAL  
GEMOLOGICAL  
INSTITUTE**

LABORATORY GROWN  
DIAMOND REPORT

December 11, 2021	
IGI Report Number	LG506180977
Description	LABORATORY GROWN DIAMOND
Shape and Cutting Style	OVAL BRILLIANT
Measurements	10.36 X 7.63 X 4.80 MM
GRADING RESULTS	
Carat Weight	2.36 CARATS
Color Grade	E
Clarity Grade	VVS 2

## PROPORTIONS



COLOR GRADING SCALE	CL		NC	FT	VLT	LT
	COLORLESS D-F		NEAR COLORLESS G-J	FAINT K-M	VERY LIGHT N-R	LIGHT S-Z
CLARITY (10x) GRADING SCALE	FL	IF	VVS	VS	SI	I
	FLAWLESS Internally Flawless		VERY VERY SLIGHTLY INCLUDED	VERY SLIGHTLY INCLUDED	SLIGHTLY INCLUDED	INCLUDED

December 11, 2021	
IGI Report Number	LG506180977
Description	LABORATORY GROWN DIAMOND
Shape and Cutting Style	OVAL BRILLIANT
Measurements	10.36 X 7.63 X 4.80 MM

## GRADING RESULTS

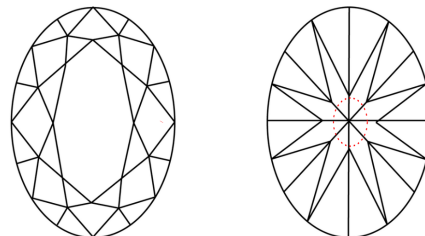
Carat Weight	2.36 CARATS
Color Grade	E
Clarity Grade	VS 2

### ADDITIONAL GRADING INFORMATION

Polish	EXCELLENT
Symmetry	EXCELLENT
Fluorescence	NONE
Inscription(s)	LABGROWN IGI LG506180977

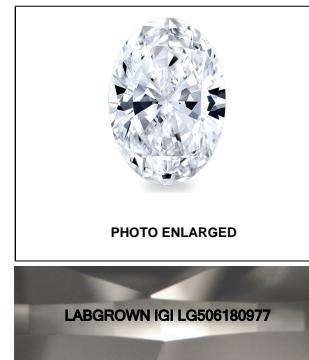
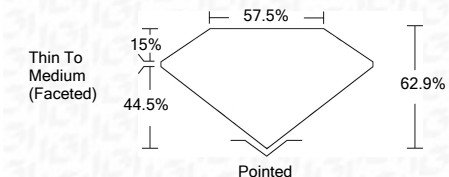
Comments: As Grown - No indication of post-growth treatment  
This Laboratory Grown Diamond was created by Chemical  
Vapor Deposition (CVD) process  
Type IIa

## CLARITY CHARACTERISTICS



## KEY TO SYMBOLS

Red symbols indicate internal characteristics.  
Green symbols indicate external characteristics.

LASERSCRIBE<sup>SM</sup>

### ADDITIONAL GRADING INFORMATION

Polish	EXCELLENT
Symmetry	EXCELLENT
Fluorescence	NONE
Inscription(s)	LABGROWN IGI LG506180977

Comments: As Grown - No indication of post-growth treatment  
This Laboratory Grown Diamond was created by Chemical Vapor Deposition (CVD) process  
Type IIa



IGI

[illegible]