



**ELECTRONIC COPY**

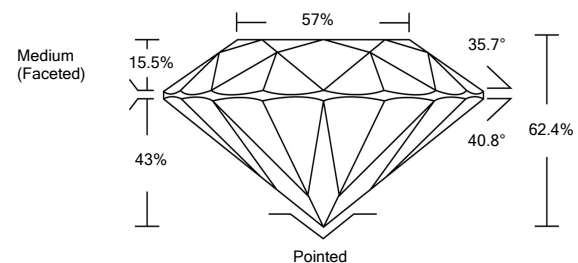
LG514269319

**LABORATORY GROWN DIAMOND REPORT**

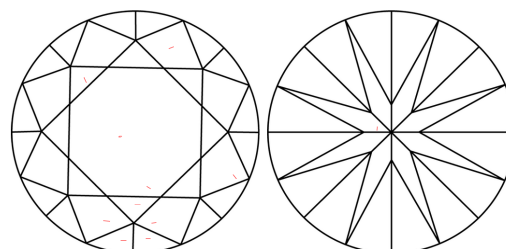
**GRADING SCALES**

| COLOR GRADING SCALE         | CL                           | NC                          | FT                     | VLT               | LT        |          |
|-----------------------------|------------------------------|-----------------------------|------------------------|-------------------|-----------|----------|
|                             | COLORLESS D-F                | NEAR COLORLESS G-J          | FAINT K-M              | VERY LIGHT N-R    | LIGHT S-Z |          |
| CLARITY (10x) GRADING SCALE | FL                           | IF                          | VVS                    | VS                | SI        | I        |
|                             | FLAWLESS INTERNALLY FLAWLESS | VERY VERY SLIGHTLY INCLUDED | VERY SLIGHTLY INCLUDED | SLIGHTLY INCLUDED |           | INCLUDED |

**PROPORTIONS**

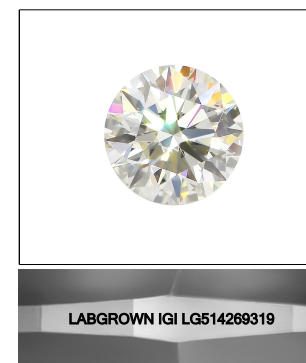


**CLARITY CHARACTERISTICS**



**KEY TO SYMBOLS**

Red symbols indicate internal characteristics.  
Green symbols indicate external characteristics.



**LASERSCRIBE<sup>SM</sup>**

Sample Image Used

January 27, 2022

IGI Report Number

**LG514269319**

Description

**LABORATORY GROWN  
DIAMOND**

Shape and Cutting Style

**ROUND BRILLIANT**

Measurements

**7.49 - 7.53 X 4.69 MM**

**GRADING RESULTS**

Carat Weight

**1.64 CARAT**

Color Grade

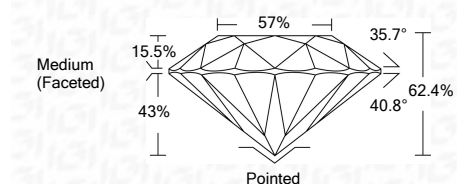
**D**

Clarity Grade

**VS 1**

Cut Grade

**IDEAL**



**ADDITIONAL GRADING INFORMATION**

Polish

**EXCELLENT**

Symmetry

**EXCELLENT**

Fluorescence

**NONE**

Inscription(s)

**LABGROWN IGI LG514269319**

Comments: As Grown - No indication of post-growth treatment.  
This Laboratory Grown Diamond was created by High Pressure High Temperature (HPHT) growth process.  
Type II

January 27, 2022

IGI Report Number

**LG514269319**

Description

**LABORATORY GROWN  
DIAMOND**

Shape and Cutting Style

**ROUND BRILLIANT**

Measurements

**7.49 - 7.53 X 4.69 MM**

**GRADING RESULTS**

Carat Weight

**1.64 CARAT**

Color Grade

**D**

Clarity Grade

**VS 1**

Cut Grade

**IDEAL**

**ADDITIONAL GRADING INFORMATION**

Polish

**EXCELLENT**

Symmetry

**EXCELLENT**

Fluorescence

**NONE**

Inscription(s)

**LABGROWN IGI LG514269319**

Comments: As Grown - No indication of post-growth treatment.  
This Laboratory Grown Diamond was created by High Pressure High Temperature (HPHT) growth process.  
Type II



**IGI**

|                            |   |              |              |
|----------------------------|---|--------------|--------------|
| IGI Report No. LG514269319 | 1.64 CARAT  | D            | Pointed      |
| ROUND BRILLIANT            | VS 1  | EXCELLENT    | EXCELLENT    |
| 7.49 - 7.53 X 4.69 MM      | IDEAL   | EXCELLENT    | EXCELLENT    |
| Carat Weight               | 62.4%   | NONE         | NONE         |
| Color Grade                | 57%   | LABGROWN IGI | LABGROWN IGI |
| Clarity Grade              | Medium (Faceted)  | LG514269319  | LG514269319  |
| Cut Grade                  |   |              |              |
| Depth                      |   |              |              |
| Table                      |   |              |              |
| Girdle                     |   |              |              |
| Culet                      |   |              |              |
| Polish                     |   |              |              |
| Symmetry                   |   |              |              |
| Fluorescence               |   |              |              |
| Inscription(s)             |   |              |              |
| Comments:                  | As Grown - No indication of post-growth treatment.<br>This Laboratory Grown Diamond was created by High Pressure High Temperature (HPHT) growth process.<br>Type II |              |              |