



**INTERNATIONAL  
GEMOLOGICAL  
INSTITUTE**

**LABORATORY GROWN DIAMOND REPORT**

**IGI LABORATORY GROWN DIAMOND IDENTIFICATION REPORT**

February 16, 2022  
 IGI Report Number LG515230328  
 Description LABORATORY GROWN DIAMOND  
 Shape and Cutting Style PRINCESS CUT  
 Measurements 4.92 X 4.90 X 3.49 MM

**GRADING RESULTS**

Carat Weight 0.73 CARAT  
 Color Grade E  
 Clarity Grade VS 1

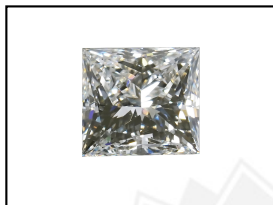
**ADDITIONAL GRADING INFORMATION**

Polish VERY GOOD  
 Symmetry EXCELLENT  
 Fluorescence NONE  
 Inscription(s) LABGROWN IGI LG515230328

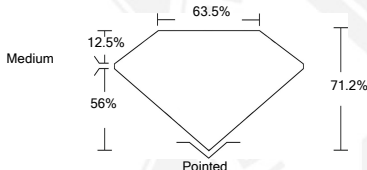
Comments: As Grown - No indication of post-growth treatment.  
 This Laboratory Grown Diamond was created by High Pressure High Temperature (HPHT) growth process.  
 Type II

**ELECTRONIC COPY LABORATORY GROWN  
DIAMOND REPORT**

**LG515230328**



**LASERSCRIBE<sup>SM</sup>**  
Sample Images Used



**IGI LABORATORY GROWN  
DIAMOND ID REPORT**

February 16, 2022  
 IGI Report Number **LG515230328**  
**PRINCESS CUT**  
**4.92 X 4.90 X 3.49 MM**  
 Carat Weight 0.73 CARAT  
 Color Grade E  
 Clarity Grade VS 1  
 Polish VERY GOOD  
 Symmetry EXCELLENT  
 Fluorescence NONE  
 Inscription(s) LABGROWN IGI  
 LG515230328

Comments: As Grown - No indication of post-growth treatment.  
 This Laboratory Grown Diamond was created by High Pressure High Temperature (HPHT) growth process.  
 Type II

**IGI LABORATORY GROWN  
DIAMOND ID REPORT**

February 16, 2022  
 IGI Report Number **LG515230328**  
**PRINCESS CUT**  
**4.92 X 4.90 X 3.49 MM**  
 Carat Weight 0.73 CARAT  
 Color Grade E  
 Clarity Grade VS 1  
 Polish VERY GOOD  
 Symmetry EXCELLENT  
 Fluorescence NONE  
 Inscription(s) LABGROWN IGI  
 LG515230328

Comments: As Grown - No indication of post-growth treatment.  
 This Laboratory Grown Diamond was created by High Pressure High Temperature (HPHT) growth process.  
 Type II

THE DOCUMENT WAS PRODUCED WITH THE FOLLOWING SECURITY MEASURES: SPECIAL DOCUMENT PAPER, INK SCREENS, WATERMARK, BACKGROUND DESIGN, HOLOGRAM AND OTHER SECURITY FEATURES NOT LISTED AND DO EXCEEDED DOCUMENT SECURITY INDUSTRY GUIDELINES.

For Terms & Conditions and to verify this report, please visit [www.igi.org](http://www.igi.org)