



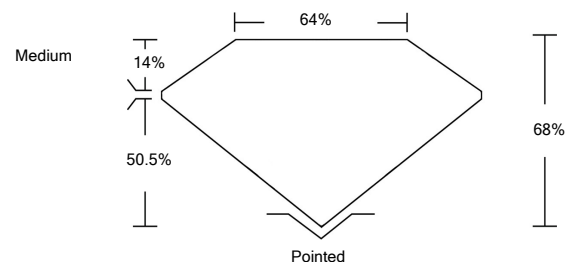
ELECTRONIC COPY

LG519231963

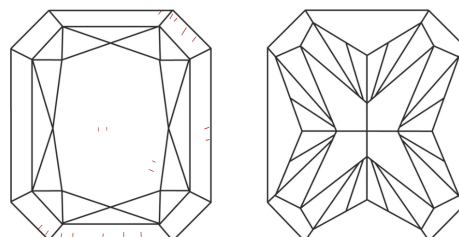
GRADING SCALES

| | | | | | | |
|-----------------------------|------------------------------|-----------------------------|------------------------|-------------------|-----------|---|
| COLOR GRADING SCALE | CL | NC | FT | VL | LT | |
| | COLORLESS D-F | NEAR COLORLESS G-J | FAINT K-M | VERY LIGHT N-R | LIGHT S-Z | |
| CLARITY (10x) GRADING SCALE | FL | IF | VVS | VS | SI | I |
| | FLAWLESS INTERNALLY FLAWLESS | VERY VERY SLIGHTLY INCLUDED | VERY SLIGHTLY INCLUDED | SLIGHTLY INCLUDED | INCLUDED | |

PROPORTIONS

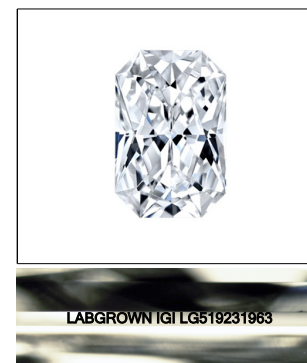


CLARITY CHARACTERISTICS



KEY TO SYMBOLS

Red symbols indicate internal characteristics.
Green symbols indicate external characteristics.

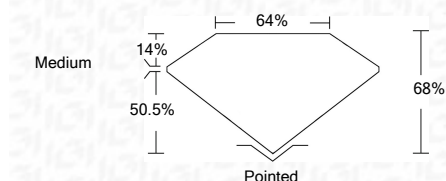


LASERSCRIBESM
Sample Image Used

March 16, 2022
IGI Report Number **LG519231963**
Description **LABORATORY GROWN DIAMOND**
Shape and Cutting Style **CUT CORNERED RECTANGULAR MODIFIED BRILLIANT**
Measurements **8.43 X 6.03 X 4.10 MM**

GRADING RESULTS

Carat Weight **1.87 CARAT**
Color Grade **E**
Clarity Grade **VS 2**



ADDITIONAL GRADING INFORMATION

Polish **EXCELLENT**
Symmetry **EXCELLENT**
Fluorescence **NONE**
Inscription(s) **LABGROWN IGI LG519231963**

Comments: As Grown - No indication of post-growth treatment.
This Laboratory Grown Diamond was created by High Pressure High Temperature (HPHT) growth process.
Type II



IGI

| | | | | | | | | | | | | | |
|----------------------------|---------------------------------------|-----------------------|------------|--------|-------|--------|----------|--------------|----------------|-----------|---|------|--------------------------|
| IGI Report No. LG519231963 | CUT CORNERED RECT. MODIFIED BRILLIANT | 8.43 X 6.03 X 4.10 MM | 1.87 CARAT | E | VS 2 | 68% | 64% | Medium | Pointed | EXCELLENT | EXCELLENT | NONE | LABGROWN IGI LG519231963 |
| Color Grade | Clarity Grade | Depth | Table | Girdle | Culet | Polish | Symmetry | Fluorescence | Inscription(s) | Comments: | As Grown - No indication of post-growth treatment. This Laboratory Grown Diamond was created by High Pressure High Temperature (HPHT) growth process. Type II | | |

