



**ELECTRONIC COPY**

**LABORATORY GROWN DIAMOND REPORT**

March 10, 2022  
 IGI Report Number **LG519241701**  
 Description **LABORATORY GROWN  
DIAMOND**  
 Shape and Cutting Style **ROUND BRILLIANT**  
 Measurements **7.92 - 7.96 X 4.86 MM**

**GRADING RESULTS**

Carat Weight **1.90 CARAT**  
 Color Grade **F**  
 Clarity Grade **VVS 2**  
 Cut Grade **IDEAL**

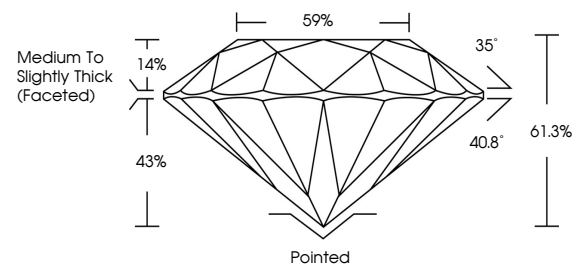
**ADDITIONAL GRADING INFORMATION**

Polish **EXCELLENT**  
 Symmetry **EXCELLENT**  
 Fluorescence **NONE**  
 Inscription(s) **LABGROWN IGI LG519241701**

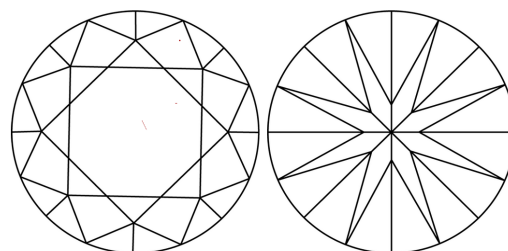
Comments: HEARTS & ARROWS  
 As Grown - No indication of post-growth treatment  
 This Laboratory Grown Diamond was created by  
 Chemical Vapor Deposition (CVD) process  
 Type IIa

LG519241701

**PROPORTIONS**



**CLARITY CHARACTERISTICS**



**KEY TO SYMBOLS**

Red symbols indicate internal characteristics.  
 Green symbols indicate external characteristics.

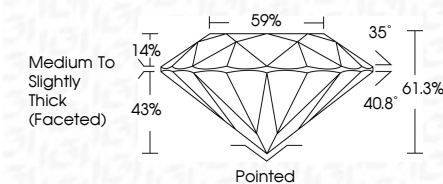


www.igi.org

**GRADING SCALES**

COLOR GRADING SCALE	CL	NC	FT	VLT	LT	
	COLORLESS D-F	NEAR COLORLESS G-J	FAINT K-M	VERY LIGHT N-R	LIGHT S-Z	
CLARITY (10x) GRADING SCALE	FL	IF	VVS	VS	SI	I
	FLAWLESS INTERNALLY FLAWLESS	VERY VERY SLIGHTLY INCLUDED	VERY SLIGHTLY INCLUDED	SLIGHTLY INCLUDED	INCLUDED	

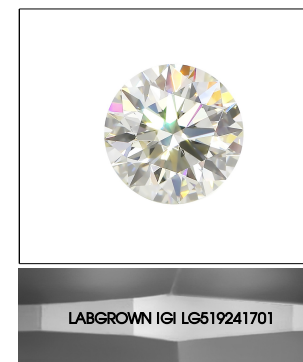
March 10, 2022  
 IGI Report Number **LG519241701**  
 Description **LABORATORY GROWN  
DIAMOND**  
 Shape and Cutting Style **ROUND BRILLIANT**  
 Measurements **7.92 - 7.96 X 4.86 MM**  
**GRADING RESULTS**  
 Carat Weight **1.90 CARAT**  
 Color Grade **F**  
 Clarity Grade **VVS 2**  
 Cut Grade **IDEAL**



**ADDITIONAL GRADING INFORMATION**

Polish **EXCELLENT**  
 Symmetry **EXCELLENT**  
 Fluorescence **NONE**  
 Inscription(s) **LABGROWN IGI LG519241701**

Comments: HEARTS & ARROWS  
 As Grown - No indication of post-growth treatment  
 This Laboratory Grown Diamond was created by  
 Chemical Vapor Deposition (CVD) process  
 Type IIa



**LASERSCRIBE<sup>SM</sup>**

Sample Image Used



**IGI**

March 10, 2022  
 IGI Report No. **LG519241701**  
**ROUND BRILLIANT**  
**7.92 - 7.96 X 4.86 MM**  
 Carat Weight **1.90 CARAT**  
 Color Grade **F**  
 Clarity Grade **VVS 2**  
 Cut Grade **IDEAL**  
 Depth **61.3%**  
 Table **59%**  
 Girdle **Medium to Slightly Thick (Faceted)**  
 Culet **Pointed**  
 Polish **EXCELLENT**  
 Symmetry **EXCELLENT**  
 Fluorescence **NONE**  
 Inscription(s) **LABGROWN IGI LG519241701**  
**Comments: HEARTS & ARROWS**  
 As Grown - No indication of post-growth treatment  
 This Laboratory Grown Diamond was created by Chemical Vapor Deposition (CVD) process  
 Type IIa