



ELECTRONIC COPY

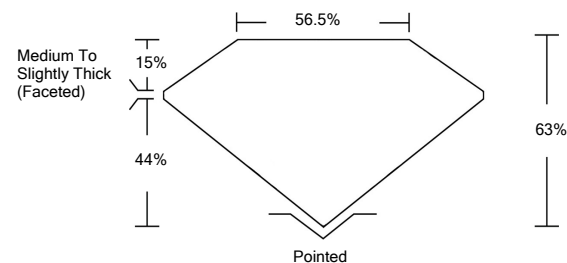
LABORATORY GROWN DIAMOND REPORT

March 21, 2022	
IGI Report Number	LG520210277
Description	LABORATORY GROWN DIAMOND
Shape and Cutting Style	OVAL BRILLIANT
Measurements	10.12 X 7.25 X 4.57 MM
GRADING RESULTS	
Carat Weight	2.07 CARATS
Color Grade	F
Clarity Grade	VVS 2
ADDITIONAL GRADING INFORMATION	
Polish	EXCELLENT
Symmetry	EXCELLENT
Fluorescence	NONE
Inscription(s)	LABGROWN IGI LG520210277

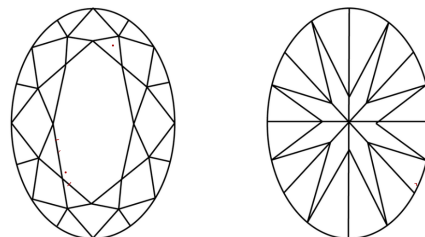
Comments: This Laboratory Grown Diamond was created by Chemical Vapor Deposition (CVD) growth process and may include post-growth treatment.
Type IIa

LG520210277

PROPORTIONS



CLARITY CHARACTERISTICS

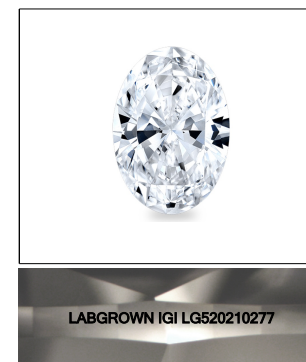


KEY TO SYMBOLS

Red symbols indicate internal characteristics.
Green symbols indicate external characteristics.

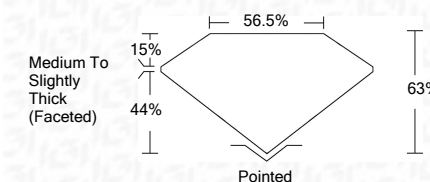
GRADING SCALES

COLOR GRADING SCALE	CL	NC	FT	VLT	LT	
	COLORLESS D-F	NEAR COLORLESS G-J	FAINT K-M	VERY LIGHT N-R	LIGHT S-Z	
CLARITY (10x) GRADING SCALE	FL	IF	VVS	VS	SI	I
	FLAWLESS INTERNALLY FLAWLESS	VERY VERY SLIGHTLY INCLUDED	VERY SLIGHTLY INCLUDED	SLIGHTLY INCLUDED	INCLUDED	



LASERSCRIBESM
Sample Image Used

March 21, 2022	
IGI Report Number	LG520210277
Description	LABORATORY GROWN DIAMOND
Shape and Cutting Style	OVAL BRILLIANT
Measurements	10.12 X 7.25 X 4.57 MM
GRADING RESULTS	
Carat Weight	2.07 CARATS
Color Grade	F
Clarity Grade	VVS 2



ADDITIONAL GRADING INFORMATION

Polish	EXCELLENT
Symmetry	EXCELLENT
Fluorescence	NONE
Inscription(s)	LABGROWN IGI LG520210277

Comments: This Laboratory Grown Diamond was created by Chemical Vapor Deposition (CVD) growth process and may include post-growth treatment.
Type IIa



IGI

March 21, 2022	IGI Report No. LG520210277
	OVAL BRILLIANT
	10.12 X 7.25 X 4.57 MM
	Carat Weight 2.07 CARATS
	Color Grade F
	Clarity Grade VVS 2
	Depth 63%
	Table 56.5%
	Girdle Medium To Slightly Thick (Faceted)
	Culet Pointed
	Polish EXCELLENT
	Symmetry EXCELLENT
	Fluorescence NONE
	Inscription(s) LABGROWN IGI LG520210277
	Comments: This Laboratory Grown Diamond was created by Chemical Vapor Deposition (CVD) growth process and may include post-growth treatment. Type IIa

