

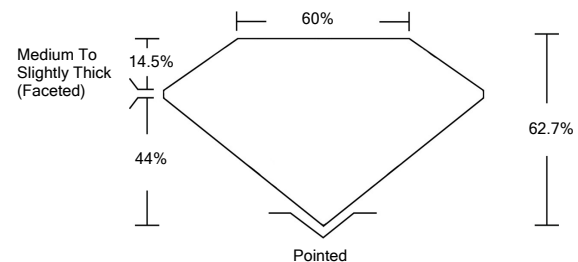


**ELECTRONIC COPY**

**LABORATORY GROWN DIAMOND REPORT**

LG523263159

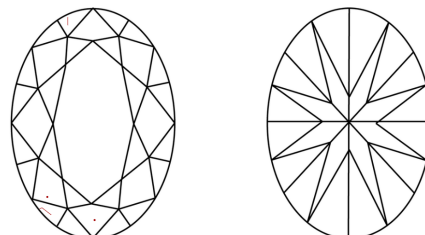
**PROPORTIONS**



**GRADING SCALES**

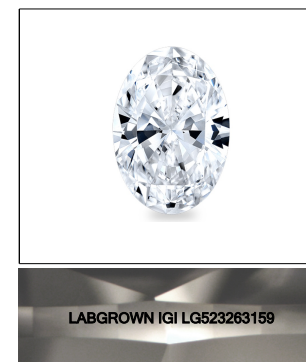
| COLOR GRADING SCALE         | CL                           | NC                          | FT                     | VL                | LT        |   |
|-----------------------------|------------------------------|-----------------------------|------------------------|-------------------|-----------|---|
|                             | COLORLESS D-F                | NEAR COLORLESS G-J          | FAINT K-M              | VERY LIGHT N-R    | LIGHT S-Z |   |
| CLARITY (10x) GRADING SCALE | FL                           | IF                          | VVS                    | VS                | SI        | I |
|                             | FLAWLESS INTERNALLY FLAWLESS | VERY VERY SLIGHTLY INCLUDED | VERY SLIGHTLY INCLUDED | SLIGHTLY INCLUDED | INCLUDED  |   |

**CLARITY CHARACTERISTICS**



**KEY TO SYMBOLS**

Red symbols indicate internal characteristics.  
Green symbols indicate external characteristics.



**LASERSCRIBE<sup>SM</sup>**  
Sample Image Used

April 1, 2022

IGI Report Number **LG523263159**

Description **LABORATORY GROWN DIAMOND**

Shape and Cutting Style **OVAL BRILLIANT**

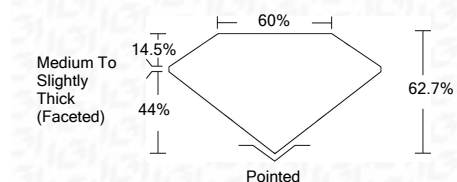
Measurements **10.11 X 7.21 X 4.52 MM**

**GRADING RESULTS**

Carat Weight **2.05 CARATS**

Color Grade **G**

Clarity Grade **VS 1**



**ADDITIONAL GRADING INFORMATION**

Polish **EXCELLENT**

Symmetry **EXCELLENT**

Fluorescence **NONE**

Inscription(s) **LABGROWN IGI LG523263159**

Comments: This Laboratory Grown Diamond was created by Chemical Vapor Deposition (CVD) growth process and may include post-growth treatment.  
Type IIa

April 1, 2022

IGI Report Number **LG523263159**

Description **LABORATORY GROWN DIAMOND**

Shape and Cutting Style **OVAL BRILLIANT**

Measurements **10.11 X 7.21 X 4.52 MM**

**GRADING RESULTS**

Carat Weight **2.05 CARATS**

Color Grade **G**

Clarity Grade **VS 1**

**ADDITIONAL GRADING INFORMATION**

Polish **EXCELLENT**

Symmetry **EXCELLENT**

Fluorescence **NONE**

Inscription(s) **LABGROWN IGI LG523263159**

Comments: This Laboratory Grown Diamond was created by Chemical Vapor Deposition (CVD) growth process and may include post-growth treatment.  
Type IIa



**IGI**

|                |   |                                    |           |
|----------------|---|------------------------------------|-----------|
| April 1, 2022  | IGI Report No. LG523263159  | 2.05 CARATS                        | G         |
| OVAL BRILLIANT | 10.11 X 7.21 X 4.52 MM  | VS 1                               | 62.7%     |
| Carat Weight   | 10.11 X 7.21 X 4.52 MM  | 60%                                | 14.5%     |
| Color Grade    | G   | Medium To Slightly Thick (Faceted) | Pointed   |
| Clarity Grade  | VS 1  | EXCELLENT                          | EXCELLENT |
| Depth          | 62.7%   | EXCELLENT                          | EXCELLENT |
| Table          | 60%   | NONE                               | NONE      |
| Girdle         | Medium To Slightly Thick (Faceted)  | LABGROWN IGI LG523263159           |           |
| Culet          | Pointed   |                                    |           |
| Polish         | EXCELLENT   |                                    |           |
| Symmetry       | EXCELLENT   |                                    |           |
| Fluorescence   | NONE  |                                    |           |
| Inscription(s) | LABGROWN IGI LG523263159  |                                    |           |
| Comments:      | This Laboratory Grown Diamond was created by Chemical Vapor Deposition (CVD) growth process and may include post-growth treatment. Type IIa |                                    |           |