



ELECTRONIC COPY

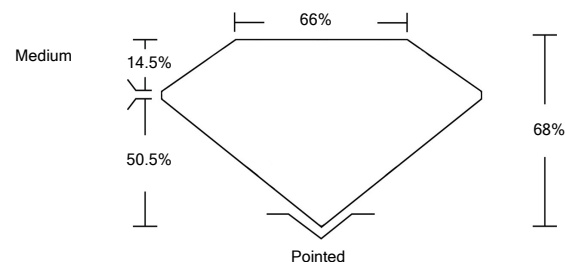
LABORATORY GROWN DIAMOND REPORT

April 19, 2022	
IGI Report Number	LG524208144
Description	LABORATORY GROWN DIAMOND
Shape and Cutting Style	CUT CORNERED RECTANGULAR MODIFIED BRILLIANT
Measurements	6.88 X 4.90 X 3.33 MM
GRADING RESULTS	
Carat Weight	1.00 CARAT
Color Grade	F
Clarity Grade	VVS 2
ADDITIONAL GRADING INFORMATION	
Polish	EXCELLENT
Symmetry	EXCELLENT
Fluorescence	NONE
Inscription(s)	LABGROWN IGI LG524208144

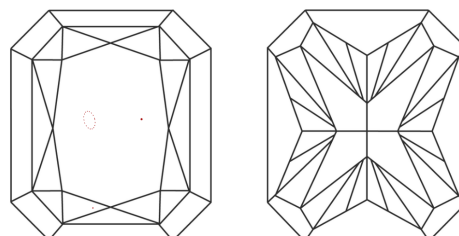
Comments: As Grown - No indication of post-growth treatment
This Laboratory Grown Diamond was created by Chemical Vapor Deposition (CVD) growth process
Type IIa

LG524208144

PROPORTIONS



CLARITY CHARACTERISTICS

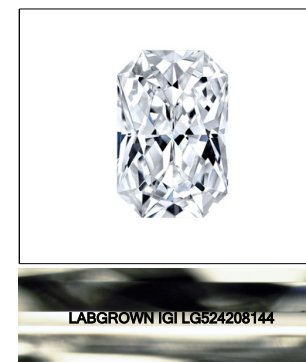


KEY TO SYMBOLS

Red symbols indicate internal characteristics.
Green symbols indicate external characteristics.

GRADING SCALES

COLOR GRADING SCALE	CL	NC	FT	VLT	LT	
	COLORLESS D-F	NEAR COLORLESS G-J	FAINT K-M	VERY LIGHT N-R	LIGHT S-Z	
CLARITY (10x) GRADING SCALE	FL	IF	VVS	VS	SI	I
	FLAWLESS INTERNALLY FLAWLESS	VERY VERY SLIGHTLY INCLUDED	VERY SLIGHTLY INCLUDED	SLIGHTLY INCLUDED	INCLUDED	

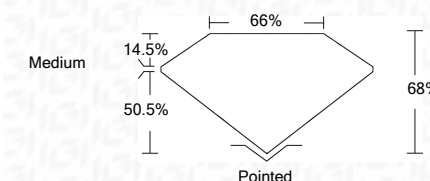


LASERSCRIBESM

Sample Image Used

April 19, 2022	
IGI Report Number	LG524208144
Description	LABORATORY GROWN DIAMOND
Shape and Cutting Style	CUT CORNERED RECTANGULAR MODIFIED BRILLIANT
Measurements	6.88 X 4.90 X 3.33 MM

GRADING RESULTS	
Carat Weight	1.00 CARAT
Color Grade	F
Clarity Grade	VVS 2



ADDITIONAL GRADING INFORMATION	
Polish	EXCELLENT
Symmetry	EXCELLENT
Fluorescence	NONE
Inscription(s)	LABGROWN IGI LG524208144

Comments: As Grown - No indication of post-growth treatment
This Laboratory Grown Diamond was created by Chemical Vapor Deposition (CVD) growth process
Type IIa



April 19, 2022	IGI Report No. LG524208144	CUT CORNERED RECT. MODIFIED BRILLIANT	6.88 X 4.90 X 3.33 MM	1.00 CARAT	F	VVS 2	68%	66%	Medium	Pointed	EXCELLENT	EXCELLENT	NONE	LABGROWN IGI LG524208144	As Grown - No indication of post-growth treatment This Laboratory Grown Diamond was created by Chemical Vapor Deposition (CVD) growth process Type IIa

