



ELECTRONIC COPY

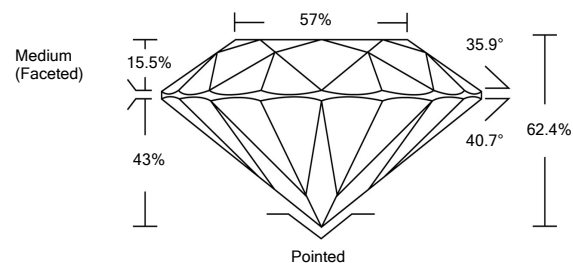
LG526269760

LABORATORY GROWN DIAMOND REPORT

GRADING SCALES

| COLOR GRADING SCALE | CL | NC | FT | VL | LT | |
|-----------------------------|------------------------------|-----------------------------|------------------------|-------------------|-----------|---|
| | COLORLESS D-F | NEAR COLORLESS G-J | FAINT K-M | VERY LIGHT N-R | LIGHT S-Z | |
| CLARITY (10x) GRADING SCALE | FL | IF | VVS | VS | SI | I |
| | FLAWLESS INTERNALLY FLAWLESS | VERY VERY SLIGHTLY INCLUDED | VERY SLIGHTLY INCLUDED | SLIGHTLY INCLUDED | INCLUDED | |

PROPORTIONS



April 30, 2022

IGI Report Number

LG526269760

Description

**LABORATORY GROWN
DIAMOND**

Shape and Cutting Style

ROUND BRILLIANT

Measurements

6.86 - 6.89 X 4.29 MM

GRADING RESULTS

Carat Weight

1.26 CARAT

Color Grade

E

Clarity Grade

VVS 2

Cut Grade

IDEAL

April 30, 2022

IGI Report Number

LG526269760

Description

**LABORATORY GROWN
DIAMOND**

Shape and Cutting Style

ROUND BRILLIANT

Measurements

6.86 - 6.89 X 4.29 MM

GRADING RESULTS

Carat Weight

1.26 CARAT

Color Grade

E

Clarity Grade

VVS 2

Cut Grade

IDEAL

ADDITIONAL GRADING INFORMATION

Polish

EXCELLENT

Symmetry

EXCELLENT

Fluorescence

NONE

Inscription(s)

LABGROWN IGI LG526269760

Comments: As Grown - No indication of post-growth treatment.

This Laboratory Grown Diamond was created by High Pressure High Temperature (HPHT) growth process.

Type II

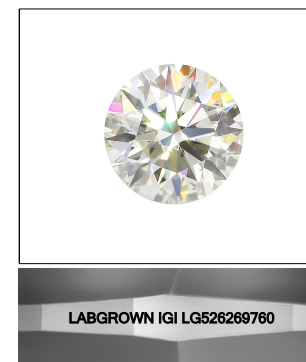
CLARITY CHARACTERISTICS



KEY TO SYMBOLS

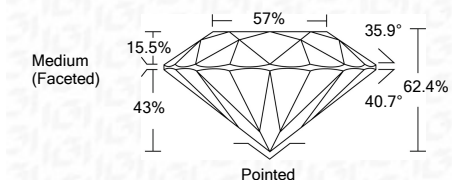
Red symbols indicate internal characteristics.

Green symbols indicate external characteristics.



LASERSCRIBESM

Sample Image Used



ADDITIONAL GRADING INFORMATION

Polish

EXCELLENT

Symmetry

EXCELLENT

Fluorescence

NONE

Inscription(s)

LABGROWN IGI LG526269760

Comments: As Grown - No indication of post-growth treatment.

This Laboratory Grown Diamond was created by High Pressure High Temperature (HPHT) growth process.

Type II



IGI

| | | | | |
|-----------------|----------------------------|------------------|-------|--|
| April 30, 2022 | IGI Report No. LG526269760 | 1.26 CARAT | E | Pointed |
| ROUND BRILLIANT | 6.86 - 6.89 X 4.29 MM | VVS 2 | IDEAL | EXCELLENT |
| Carat Weight | | 62.4% | 57% | EXCELLENT |
| Color Grade | | Medium (Faceted) | | NONE |
| Clarity Grade | | | | LABGROWN IGI LG526269760 |
| Cut Grade | | | | Inscription(s) |
| Depth | | | | Comments: As Grown - No indication of post-growth treatment. |
| Table | | | | This Laboratory Grown Diamond was created by High Pressure High Temperature (HPHT) growth process. |
| Girdle | | | | Type II |
| Culet | | | | |
| Polish | | | | |
| Symmetry | | | | |
| Fluorescence | | | | |
| Inscription(s) | | | | |