



ELECTRONIC COPY

LG526278614

LABORATORY GROWN DIAMOND REPORT

April 30, 2022
IGI Report Number **LG526278614**
Description **LABORATORY GROWN
DIAMOND**
Shape and Cutting Style **ROUND BRILLIANT**
Measurements **8.67 - 8.71 X 5.37 MM**

GRADING RESULTS

Carat Weight **2.51 CARATS**
Color Grade **G**
Clarity Grade **VS 1**
Cut Grade **IDEAL**

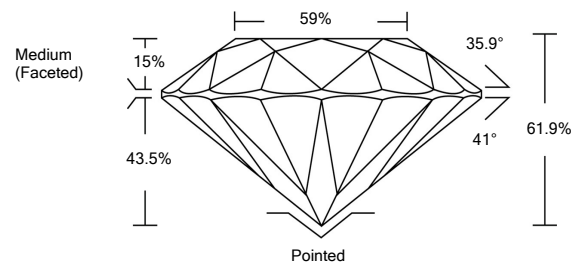
ADDITIONAL GRADING INFORMATION

Polish **EXCELLENT**
Symmetry **EXCELLENT**
Fluorescence **NONE**

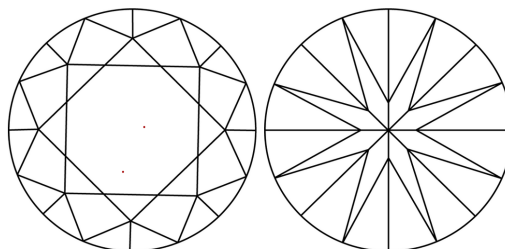
Inscription(s) **LABGROWN IGI LG526278614**

Comments: This Laboratory Grown Diamond was created by Chemical Vapor Deposition (CVD) growth process and may include post-growth treatment.
Type IIa

PROPORTIONS



CLARITY CHARACTERISTICS

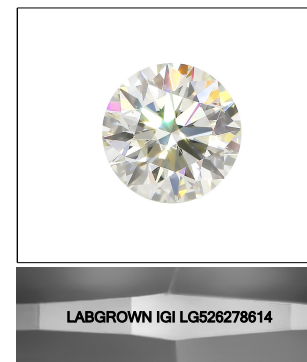


KEY TO SYMBOLS

Red symbols indicate internal characteristics.
Green symbols indicate external characteristics.

GRADING SCALES

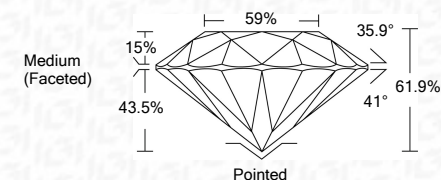
COLOR GRADING SCALE	CL	NC	FT	VL	LT	
	COLORLESS D-F	NEAR COLORLESS G-J	FAINT K-M	VERY LIGHT N-R	LIGHT S-Z	
CLARITY (10x) GRADING SCALE	FL	IF	VVS	VS	SI	I
	FLAWLESS INTERNALLY FLAWLESS	VERY VERY SLIGHTLY INCLUDED	VERY SLIGHTLY INCLUDED	SLIGHTLY INCLUDED		INCLUDED



LASERSCRIBESM

Sample Image Used

April 30, 2022
IGI Report Number **LG526278614**
Description **LABORATORY GROWN
DIAMOND**
Shape and Cutting Style **ROUND BRILLIANT**
Measurements **8.67 - 8.71 X 5.37 MM**
GRADING RESULTS
Carat Weight **2.51 CARATS**
Color Grade **G**
Clarity Grade **VS 1**
Cut Grade **IDEAL**



ADDITIONAL GRADING INFORMATION

Polish **EXCELLENT**
Symmetry **EXCELLENT**
Fluorescence **NONE**

Inscription(s) **LABGROWN IGI LG526278614**

Comments: This Laboratory Grown Diamond was created by Chemical Vapor Deposition (CVD) growth process and may include post-growth treatment.
Type IIa



IGI



April 30, 2022	IGI Report No. LG526278614	2.51 CARATS	G	Pointed	EXCELLENT	EXCELLENT	LABGROWN IGI LG526278614	<p>Comments: This Laboratory Grown Diamond was created by Chemical Vapor Deposition (CVD) growth process and may include post-growth treatment. Type IIa</p>
ROUND BRILLIANT	8.67 - 8.71 X 5.37 MM	VS 1	IDEAL	61.9%	59%	Medium (Faceted)	NONE	
Color Grade	2.51 CARATS	VS 1	IDEAL	61.9%	59%	Medium (Faceted)	NONE	
Clarity Grade	2.51 CARATS	VS 1	IDEAL	61.9%	59%	Medium (Faceted)	NONE	
Cut Grade	2.51 CARATS	VS 1	IDEAL	61.9%	59%	Medium (Faceted)	NONE	
Depth	2.51 CARATS	VS 1	IDEAL	61.9%	59%	Medium (Faceted)	NONE	
Table	2.51 CARATS	VS 1	IDEAL	61.9%	59%	Medium (Faceted)	NONE	
Culet	2.51 CARATS	VS 1	IDEAL	61.9%	59%	Medium (Faceted)	NONE	
Polish	2.51 CARATS	VS 1	IDEAL	61.9%	59%	Medium (Faceted)	NONE	
Symmetry	2.51 CARATS	VS 1	IDEAL	61.9%	59%	Medium (Faceted)	NONE	