



ELECTRONIC COPY

LG528205474

LABORATORY GROWN DIAMOND REPORT

April 30, 2022
IGI Report Number LG528205474
Description LABORATORY GROWN DIAMOND
Shape and Cutting Style ROUND BRILLIANT
Measurements 8.74 - 8.77 X 5.41 MM

GRADING RESULTS

Carat Weight 2.53 CARATS
Color Grade G
Clarity Grade VS 1
Cut Grade IDEAL

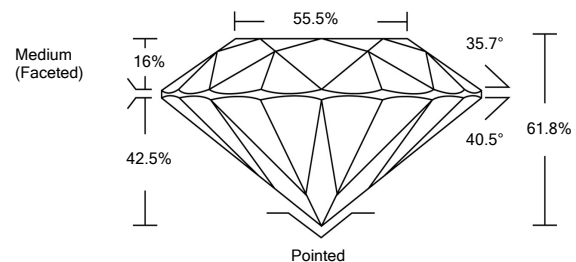
ADDITIONAL GRADING INFORMATION

Polish EXCELLENT
Symmetry EXCELLENT
Fluorescence NONE

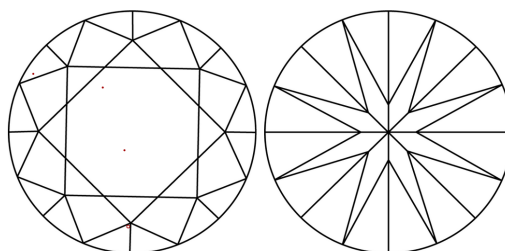
Inscription(s) LABGROWN IGI LG528205474

Comments: This Laboratory Grown Diamond was created by Chemical Vapor Deposition (CVD) growth process and may include post-growth treatment. Type IIa

PROPORTIONS



CLARITY CHARACTERISTICS

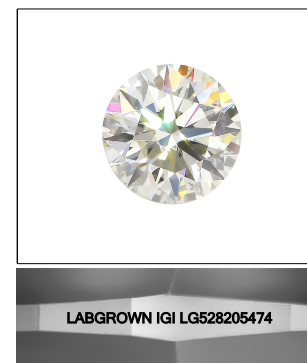


KEY TO SYMBOLS

Red symbols indicate internal characteristics.
Green symbols indicate external characteristics.

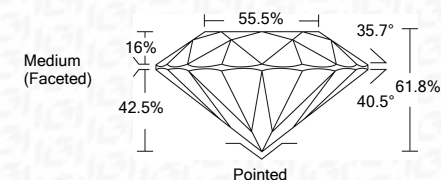
GRADING SCALES

Table showing Color Grading Scale (CL to LT) and Clarity (10x) Grading Scale (FL to I).



LASERSCRIBE SM
Sample Image Used

April 30, 2022
IGI Report Number LG528205474
Description LABORATORY GROWN DIAMOND
Shape and Cutting Style ROUND BRILLIANT
Measurements 8.74 - 8.77 X 5.41 MM
GRADING RESULTS
Carat Weight 2.53 CARATS
Color Grade G
Clarity Grade VS 1
Cut Grade IDEAL



ADDITIONAL GRADING INFORMATION

Polish EXCELLENT
Symmetry EXCELLENT
Fluorescence NONE

Inscription(s) LABGROWN IGI LG528205474

Comments: This Laboratory Grown Diamond was created by Chemical Vapor Deposition (CVD) growth process and may include post-growth treatment. Type IIa



IGI

April 30, 2022
IGI Report No. LG528205474
ROUND BRILLIANT
8.74 - 8.77 X 5.41 MM
2.53 CARATS
G
VS 1
IDEAL
61.8%
55.5%
Medium (Faceted)
Pointed
EXCELLENT
EXCELLENT
NONE
LABGROWN IGI LG528205474
Comments: This Laboratory Grown Diamond was created by Chemical Vapor Deposition (CVD) growth process and may include post-growth treatment. Type IIa