

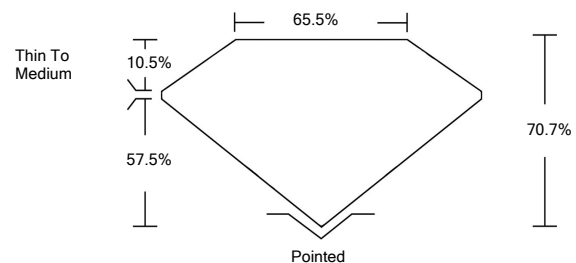


ELECTRONIC COPY

LABORATORY GROWN DIAMOND REPORT

LG528207106

PROPORTIONS



GRADING SCALES

COLOR GRADING SCALE	CL	NC	FT	VLT	LT	
	COLORLESS D-F	NEAR COLORLESS G-J	FAINT K-M	VERY LIGHT N-R	LIGHT S-Z	
CLARITY (10x) GRADING SCALE	FL	IF	VVS	VS	SI	I
	FLAWLESS INTERNALLY FLAWLESS	VERY VERY SLIGHTLY INCLUDED	VERY SLIGHTLY INCLUDED	SLIGHTLY INCLUDED	INCLUDED	INCLUDED

May 7, 2022

IGI Report Number **LG528207106**

Description **LABORATORY GROWN DIAMOND**

Shape and Cutting Style **PRINCESS CUT**

Measurements **7.09 X 6.99 X 4.94 MM**

GRADING RESULTS

Carat Weight **2.08 CARATS**

Color Grade **F**

Clarity Grade **VVS 2**

May 7, 2022

IGI Report Number **LG528207106**

Description **LABORATORY GROWN DIAMOND**

Shape and Cutting Style **PRINCESS CUT**

Measurements **7.09 X 6.99 X 4.94 MM**

GRADING RESULTS

Carat Weight **2.08 CARATS**

Color Grade **F**

Clarity Grade **VVS 2**

ADDITIONAL GRADING INFORMATION

Polish **EXCELLENT**

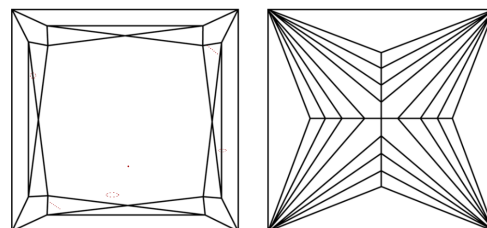
Symmetry **EXCELLENT**

Fluorescence **NONE**

Inscription(s) **LABGROWN IGI LG528207106**

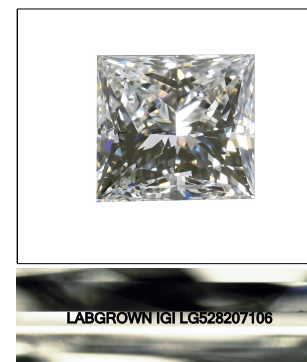
Comments: This Laboratory Grown Diamond was created by Chemical Vapor Deposition (CVD) growth process and may include post-growth treatment.
Type IIa

CLARITY CHARACTERISTICS



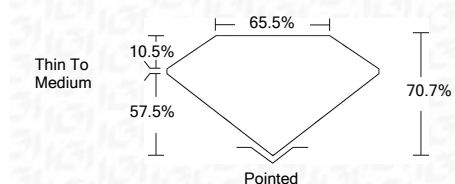
KEY TO SYMBOLS

Red symbols indicate internal characteristics.
Green symbols indicate external characteristics.



LASERSCRIBESM

Sample Image Used



ADDITIONAL GRADING INFORMATION

Polish **EXCELLENT**

Symmetry **EXCELLENT**

Fluorescence **NONE**

Inscription(s) **LABGROWN IGI LG528207106**

Comments: This Laboratory Grown Diamond was created by Chemical Vapor Deposition (CVD) growth process and may include post-growth treatment.
Type IIa



IGI

May 7, 2022
IGI Report No. LG528207106
PRINCESS CUT
7.09 X 6.99 X 4.94 MM
2.08 CARATS
Color Grade **F**
Clarity Grade **VVS 2**
Depth **70.7%**
Table **65.5%**
Girdle **Thin To Medium**
Culet **Pointed**
Polish **EXCELLENT**
Symmetry **EXCELLENT**
Fluorescence **NONE**
Inscription(s) **LABGROWN IGI LG528207106**
Comments:

This Laboratory Grown Diamond was created by Chemical Vapor Deposition (CVD) growth process and may include post-growth treatment.
Type IIa