

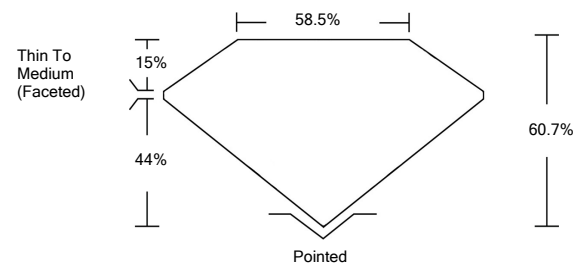


ELECTRONIC COPY

LABORATORY GROWN DIAMOND REPORT

LG528223682

PROPORTIONS



GRADING SCALES

| | | | | | | |
|-----------------------------|------------------------------|-----------------------------|------------------------|-------------------|-----------|---|
| COLOR GRADING SCALE | CL | NC | FT | VLT | LT | |
| | COLORLESS D-F | NEAR COLORLESS G-J | FAINT K-M | VERY LIGHT N-R | LIGHT S-Z | |
| CLARITY (10x) GRADING SCALE | FL | IF | VVS | VS | SI | I |
| | FLAWLESS INTERNALLY FLAWLESS | VERY VERY SLIGHTLY INCLUDED | VERY SLIGHTLY INCLUDED | SLIGHTLY INCLUDED | INCLUDED | |

May 6, 2022

IGI Report Number **LG528223682**

Description **LABORATORY GROWN DIAMOND**

Shape and Cutting Style **OVAL BRILLIANT**

Measurements **10.41 X 7.30 X 4.43 MM**

GRADING RESULTS

Carat Weight **2.06 CARATS**

Color Grade **D**

Clarity Grade **VS 1**

May 6, 2022

IGI Report Number **LG528223682**

Description **LABORATORY GROWN DIAMOND**

Shape and Cutting Style **OVAL BRILLIANT**

Measurements **10.41 X 7.30 X 4.43 MM**

GRADING RESULTS

Carat Weight **2.06 CARATS**

Color Grade **D**

Clarity Grade **VS 1**

ADDITIONAL GRADING INFORMATION

Polish **EXCELLENT**

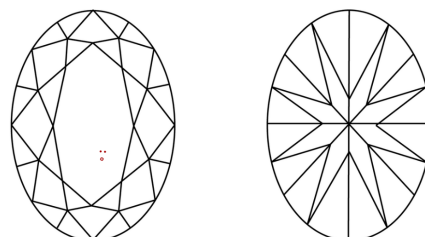
Symmetry **EXCELLENT**

Fluorescence **NONE**

Inscription(s) **LABGROWN IGI LG528223682**

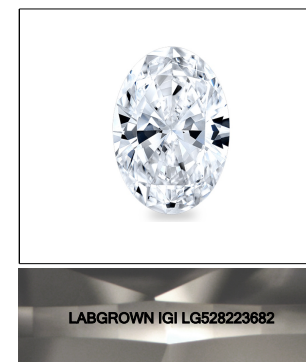
Comments: As Grown - No indication of post-growth treatment. This Laboratory Grown Diamond was created by High Pressure High Temperature (HPHT) growth process. Type II

CLARITY CHARACTERISTICS

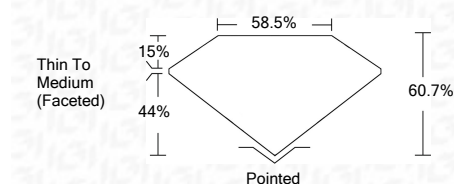


KEY TO SYMBOLS

Red symbols indicate internal characteristics.
Green symbols indicate external characteristics.



LASERSCRIBESM
Sample Image Used



ADDITIONAL GRADING INFORMATION

Polish **EXCELLENT**

Symmetry **EXCELLENT**

Fluorescence **NONE**

Inscription(s) **LABGROWN IGI LG528223682**

Comments: As Grown - No indication of post-growth treatment. This Laboratory Grown Diamond was created by High Pressure High Temperature (HPHT) growth process. Type II



| | | | |
|----------------------------|----------------------------|------------------------|--------------------------|
| May 6, 2022 | IGI Report No. LG528223682 | 2.06 CARATS | D |
| IGI Report No. LG528223682 | OVAL BRILLIANT | 10.41 X 7.30 X 4.43 MM | VS 1 |
| Carat Weight | 2.06 CARATS | Depth | 60.7% |
| Color Grade | D | Table | 58.5% |
| Clarity Grade | VS 1 | Grade | Thin To Medium (Faceted) |
| Depth | 60.7% | Culet | Pointed |
| Table | 58.5% | Polish | EXCELLENT |
| Grade | Thin To Medium (Faceted) | Symmetry | EXCELLENT |
| Culet | Pointed | Fluorescence | NONE |
| Polish | EXCELLENT | Inscription(s) | LABGROWN IGI LG528223682 |
| Symmetry | EXCELLENT | Comments: | |
| Fluorescence | NONE | | |
| Inscription(s) | LABGROWN IGI LG528223682 | | |

As Grown - No indication of post-growth treatment. This Laboratory Grown Diamond was created by High Pressure High Temperature (HPHT) growth process. Type II