

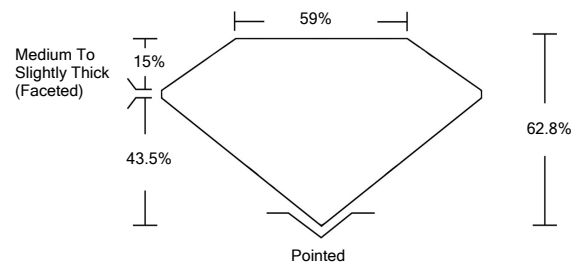


**ELECTRONIC COPY**

**LABORATORY GROWN DIAMOND REPORT**

LG528237750

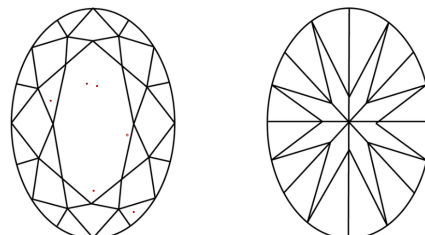
**PROPORTIONS**



**GRADING SCALES**

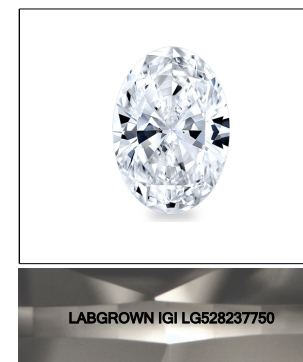
COLOR GRADING SCALE	CL	NC	FT	VL	LT	
	COLORLESS D-F	NEAR COLORLESS G-J	FAINT K-M	VERY LIGHT N-R	LIGHT S-Z	
CLARITY (10x) GRADING SCALE	FL	IF	VVS	VS	SI	I
	FLAWLESS INTERNALLY FLAWLESS	VERY VERY SLIGHTLY INCLUDED	VERY SLIGHTLY INCLUDED	SLIGHTLY INCLUDED	INCLUDED	

**CLARITY CHARACTERISTICS**



**KEY TO SYMBOLS**

Red symbols indicate internal characteristics.  
Green symbols indicate external characteristics.



**LASERSCRIBE<sup>SM</sup>**  
Sample Image Used

May 6, 2022

IGI Report Number **LG528237750**

Description **LABORATORY GROWN DIAMOND**

Shape and Cutting Style **OVAL BRILLIANT**

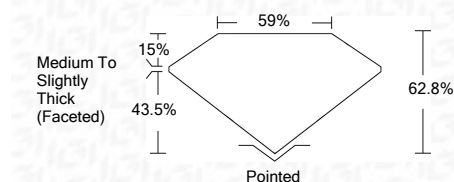
Measurements **10.19 X 6.94 X 4.36 MM**

**GRADING RESULTS**

Carat Weight **2.00 CARATS**

Color Grade **F**

Clarity Grade **VS 1**



**ADDITIONAL GRADING INFORMATION**

Polish **EXCELLENT**

Symmetry **EXCELLENT**

Fluorescence **NONE**

Inscription(s) **LABGROWN IGI LG528237750**

Comments: This Laboratory Grown Diamond was created by Chemical Vapor Deposition (CVD) growth process and may include post-growth treatment.  
Type IIa

May 6, 2022

IGI Report Number **LG528237750**

Description **LABORATORY GROWN DIAMOND**

Shape and Cutting Style **OVAL BRILLIANT**

Measurements **10.19 X 6.94 X 4.36 MM**

**GRADING RESULTS**

Carat Weight **2.00 CARATS**

Color Grade **F**

Clarity Grade **VS 1**

**ADDITIONAL GRADING INFORMATION**

Polish **EXCELLENT**

Symmetry **EXCELLENT**

Fluorescence **NONE**

Inscription(s) **LABGROWN IGI LG528237750**

Comments: This Laboratory Grown Diamond was created by Chemical Vapor Deposition (CVD) growth process and may include post-growth treatment.  
Type IIa



**IGI**

May 6, 2022	IGI Report No. LG528237750	2.00 CARATS	F
IGI Report No. LG528237750	OVAL BRILLIANT	10.19 X 6.94 X 4.36 MM	VS 1
Carat Weight	2.00 CARATS	10.19 X 6.94 X 4.36 MM	62.8%
Color Grade	F	10.19 X 6.94 X 4.36 MM	59%
Clarity Grade	VS 1	10.19 X 6.94 X 4.36 MM	Medium To Slightly Thick (Faceted)
Depth	62.8%	10.19 X 6.94 X 4.36 MM	Pointed
Table	59%	10.19 X 6.94 X 4.36 MM	EXCELLENT
Girdle	Medium To Slightly Thick (Faceted)	10.19 X 6.94 X 4.36 MM	EXCELLENT
Culet	Pointed	10.19 X 6.94 X 4.36 MM	NONE
Polish	EXCELLENT	10.19 X 6.94 X 4.36 MM	LABGROWN IGI LG528237750
Symmetry	EXCELLENT	10.19 X 6.94 X 4.36 MM	
Fluorescence	NONE	10.19 X 6.94 X 4.36 MM	
Inscription(s)	LABGROWN IGI LG528237750	10.19 X 6.94 X 4.36 MM	
Comments:	This Laboratory Grown Diamond was created by Chemical Vapor Deposition (CVD) growth process and may include post-growth treatment. Type IIa	10.19 X 6.94 X 4.36 MM	