

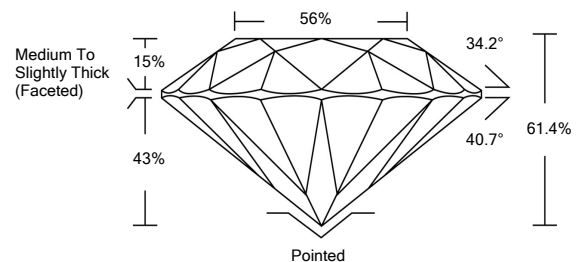


ELECTRONIC COPY

LABORATORY GROWN DIAMOND REPORT

LG528237762

PROPORTIONS



GRADING SCALES

| | | | | | | |
|-----------------------------|------------------------------|-----------------------------|------------------------|-------------------|-----------|---|
| COLOR GRADING SCALE | CL | NC | FT | VL | LT | |
| | COLORLESS D-F | NEAR COLORLESS G-J | FAINT K-M | VERY LIGHT N-R | LIGHT S-Z | |
| CLARITY (10x) GRADING SCALE | FL | IF | VVS | VS | SI | I |
| | FLAWLESS INTERNALLY FLAWLESS | VERY VERY SLIGHTLY INCLUDED | VERY SLIGHTLY INCLUDED | SLIGHTLY INCLUDED | INCLUDED | |

May 6, 2022

IGI Report Number

LG528237762

Description

LABORATORY GROWN DIAMOND

Shape and Cutting Style

ROUND BRILLIANT

Measurements

7.63 - 7.65 X 4.69 MM

GRADING RESULTS

Carat Weight

1.68 CARAT

Color Grade

F

Clarity Grade

VS 1

Cut Grade

IDEAL

May 6, 2022

IGI Report Number

LG528237762

Description

LABORATORY GROWN DIAMOND

Shape and Cutting Style

ROUND BRILLIANT

Measurements

7.63 - 7.65 X 4.69 MM

GRADING RESULTS

Carat Weight

1.68 CARAT

Color Grade

F

Clarity Grade

VS 1

Cut Grade

IDEAL

ADDITIONAL GRADING INFORMATION

Polish

EXCELLENT

Symmetry

EXCELLENT

Fluorescence

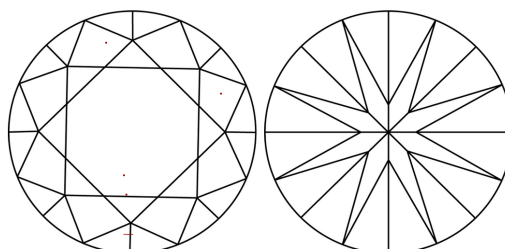
NONE

Inscription(s)

LABGROWN IGI LG528237762

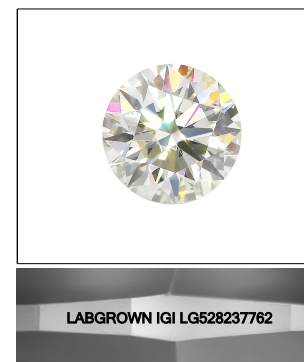
Comments: This Laboratory Grown Diamond was created by Chemical Vapor Deposition (CVD) growth process and may include post-growth treatment. Type IIa

CLARITY CHARACTERISTICS



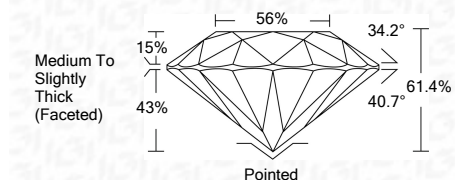
KEY TO SYMBOLS

Red symbols indicate internal characteristics. Green symbols indicate external characteristics.



LASERSCRIBESM

Sample Image Used



ADDITIONAL GRADING INFORMATION

Polish

EXCELLENT

Symmetry

EXCELLENT

Fluorescence

NONE

Inscription(s)

LABGROWN IGI LG528237762

Comments: This Laboratory Grown Diamond was created by Chemical Vapor Deposition (CVD) growth process and may include post-growth treatment. Type IIa



IGI

| | | | | | | | | | | | | | | | | | |
|----------------------------|----------------------------|-----------------------|------------|------|-------|-------|-----|------------------------------------|---------|----------|-----------|-----------|-----------|--------------------------|---|----------------|--------------------------|
| May 6, 2022 | IGI Report No. LG528237762 | 1.68 CARAT | F | VS 1 | IDEAL | 61.4% | 56% | Medium To Slightly Thick (Faceted) | Pointed | Polished | EXCELLENT | EXCELLENT | NONE | LABGROWN IGI LG528237762 | Comments: This Laboratory Grown Diamond was created by Chemical Vapor Deposition (CVD) growth process and may include post-growth treatment. Type IIa | | |
| IGI Report No. LG528237762 | ROUND BRILLIANT | 7.63 - 7.65 X 4.69 MM | 1.68 CARAT | VS 1 | IDEAL | 61.4% | 56% | Medium To Slightly Thick (Faceted) | Pointed | Polish | EXCELLENT | Symmetry | EXCELLENT | Fluorescence | NONE | Inscription(s) | LABGROWN IGI LG528237762 |