

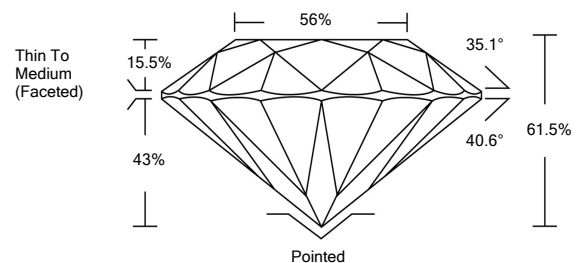


ELECTRONIC COPY

LABORATORY GROWN DIAMOND REPORT

LG530210540

PROPORTIONS



GRADING SCALES

COLOR GRADING SCALE	CL	NC	FT	VL	LT	
	COLORLESS D-F	NEAR COLORLESS G-J	FAINT K-M	VERY LIGHT N-R	LIGHT S-Z	
CLARITY (10x) GRADING SCALE	FL	IF	VVS	VS	SI	I
	FLAWLESS INTERNALLY FLAWLESS	VERY VERY SLIGHTLY INCLUDED	VERY SLIGHTLY INCLUDED	SLIGHTLY INCLUDED	INCLUDED	

May 25, 2022

IGI Report Number

LG530210540

Description

LABORATORY GROWN DIAMOND

Shape and Cutting Style

ROUND BRILLIANT

Measurements

8.71 - 8.76 X 5.38 MM

GRADING RESULTS

Carat Weight

2.51 CARATS

Color Grade

G

Clarity Grade

VS 1

Cut Grade

IDEAL

May 25, 2022

IGI Report Number

LG530210540

Description

LABORATORY GROWN DIAMOND

Shape and Cutting Style

ROUND BRILLIANT

Measurements

8.71 - 8.76 X 5.38 MM

GRADING RESULTS

Carat Weight

2.51 CARATS

Color Grade

G

Clarity Grade

VS 1

Cut Grade

IDEAL

ADDITIONAL GRADING INFORMATION

Polish

EXCELLENT

Symmetry

EXCELLENT

Fluorescence

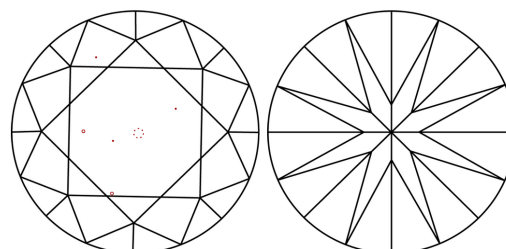
NONE

Inscription(s)

LABGROWN IGI LG530210540

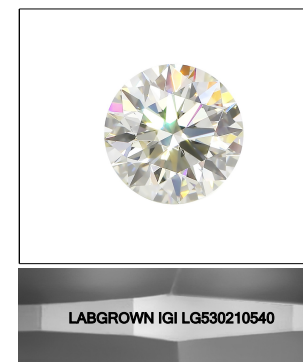
Comments: This Laboratory Grown Diamond was created by Chemical Vapor Deposition (CVD) growth process and may include post-growth treatment. Type IIa

CLARITY CHARACTERISTICS



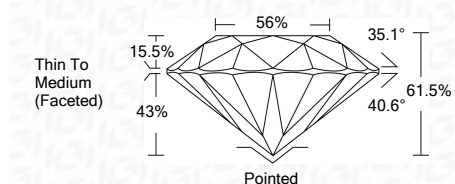
KEY TO SYMBOLS

Red symbols indicate internal characteristics. Green symbols indicate external characteristics.



LASERSCRIBESM

Sample Image Used



ADDITIONAL GRADING INFORMATION

Polish

EXCELLENT

Symmetry

EXCELLENT

Fluorescence

NONE

Inscription(s)

LABGROWN IGI LG530210540

Comments: This Laboratory Grown Diamond was created by Chemical Vapor Deposition (CVD) growth process and may include post-growth treatment. Type IIa



IGI

May 25, 2022	IGI Report No. LG530210540	2.51 CARATS	G
ROUND BRILLIANT	8.71 - 8.76 X 5.38 MM	VS 1	IDEAL
Carat Weight	8.71 - 8.76 X 5.38 MM	61.5%	56%
Color Grade		Thin To Medium (Faceted)	Pointed
Clarity Grade		EXCELLENT	EXCELLENT
Cut Grade		EXCELLENT	NONE
Depth		LABGROWN IGI	LABGROWN IGI
Table		Inscriptions(s)	
Girdle		Comments:	This Laboratory Grown Diamond was created by Chemical Vapor Deposition (CVD) growth process and may include post-growth treatment. Type IIa
Culet			
Polish			
Symmetry			
Fluorescence			
Inscriptions(s)			