



ELECTRONIC COPY

LG532239489

LABORATORY GROWN DIAMOND REPORT

May 28, 2022
 IGI Report Number **LG532239489**
 Description **LABORATORY GROWN
DIAMOND**
 Shape and Cutting Style **ROUND BRILLIANT**
 Measurements **9.21 - 9.26 X 5.66 MM**

GRADING RESULTS

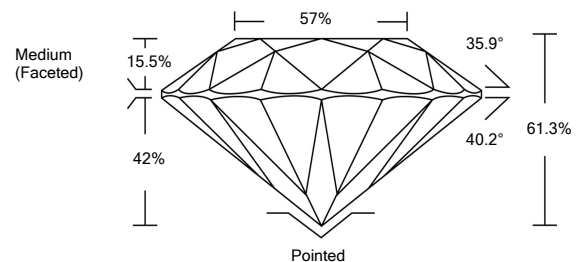
Carat Weight **2.99 CARATS**
 Color Grade **G**
 Clarity Grade **VVS 2**
 Cut Grade **IDEAL**

ADDITIONAL GRADING INFORMATION

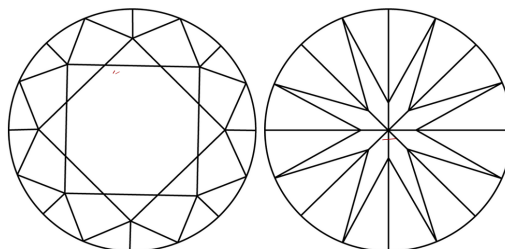
Polish **EXCELLENT**
 Symmetry **EXCELLENT**
 Fluorescence **NONE**
 Inscription(s) **LABGROWN IGI LG532239489**

Comments: HEARTS & ARROWS
 This Laboratory Grown Diamond was created by Chemical Vapor Deposition (CVD) growth process and may include post-growth treatment.
 Type IIa

PROPORTIONS

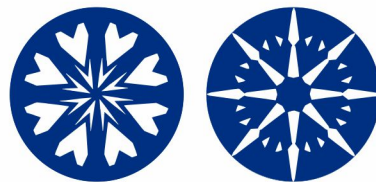


CLARITY CHARACTERISTICS



KEY TO SYMBOLS

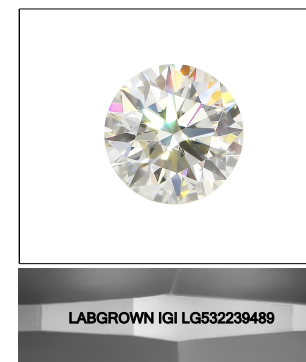
Red symbols indicate internal characteristics.
 Green symbols indicate external characteristics.



www.igi.org

GRADING SCALES

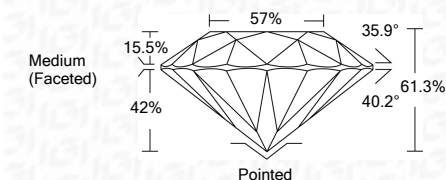
| COLOR GRADING SCALE | CL | NC | FT | VL | LT | |
|-----------------------------|------------------------------|-----------------------------|------------------------|-------------------|-----------|---|
| | COLORLESS D-F | NEAR COLORLESS G-J | FAINT K-M | VERY LIGHT N-R | LIGHT S-Z | |
| CLARITY (10x) GRADING SCALE | FL | IF | VVS | VS | SI | I |
| | FLAWLESS INTERNALLY FLAWLESS | VERY VERY SLIGHTLY INCLUDED | VERY SLIGHTLY INCLUDED | SLIGHTLY INCLUDED | INCLUDED | |



LASERSCRIBESM

Sample Image Used

May 28, 2022
 IGI Report Number **LG532239489**
 Description **LABORATORY GROWN
DIAMOND**
 Shape and Cutting Style **ROUND BRILLIANT**
 Measurements **9.21 - 9.26 X 5.66 MM**
GRADING RESULTS
 Carat Weight **2.99 CARATS**
 Color Grade **G**
 Clarity Grade **VVS 2**
 Cut Grade **IDEAL**



ADDITIONAL GRADING INFORMATION

Polish **EXCELLENT**
 Symmetry **EXCELLENT**
 Fluorescence **NONE**
 Inscription(s) **LABGROWN IGI LG532239489**
 Comments: HEARTS & ARROWS
 This Laboratory Grown Diamond was created by Chemical Vapor Deposition (CVD) growth process and may include post-growth treatment.
 Type IIa



IGI

| | | | |
|----------------------------|------------------|-------|--------------------------|
| IGI Report No. LG532239489 | 2.99 CARATS | G | Pointed |
| ROUND BRILLIANT | VVS 2 | IDEAL | EXCELLENT |
| 9.21 - 9.26 X 5.66 MM | 61.3% | 57% | EXCELLENT |
| Carat Weight | Medium (Faceted) | | NONE |
| Color Grade | | | LABGROWN IGI LG532239489 |
| Clarity Grade | | | |
| Cut Grade | | | |
| Depth | | | |
| Table | | | |
| Girdle | | | |
| Culet | | | |
| Polish | | | |
| Symmetry | | | |
| Fluorescence | | | |
| Inscription(s) | | | |

HEARTS & ARROWS
 This Laboratory Grown Diamond was created by Chemical Vapor Deposition (CVD) growth process and may include post-growth treatment.
 Type IIa