

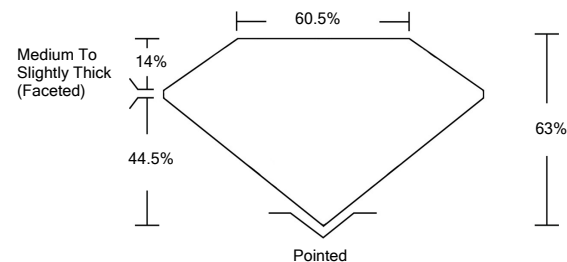


ELECTRONIC COPY

LABORATORY GROWN DIAMOND REPORT

LG534237576

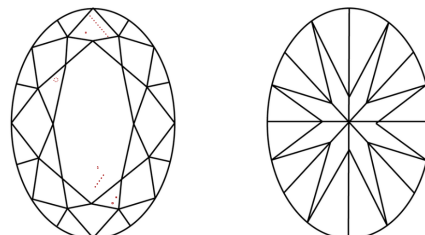
PROPORTIONS



GRADING SCALES

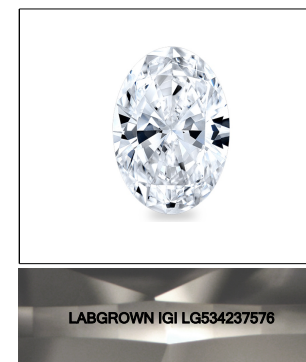
COLOR GRADING SCALE	CL	NC	FT	VL	LT	
	COLORLESS D-F	NEAR COLORLESS G-J	FAINT K-M	VERY LIGHT N-R	LIGHT S-Z	
CLARITY (10x) GRADING SCALE	FL	IF	VVS	VS	SI	I
	FLAWLESS INTERNALLY FLAWLESS	VERY VERY SLIGHTLY INCLUDED	VERY SLIGHTLY INCLUDED	SLIGHTLY INCLUDED	INCLUDED	

CLARITY CHARACTERISTICS



KEY TO SYMBOLS

Red symbols indicate internal characteristics.
Green symbols indicate external characteristics.



LASERSCRIBESM
Sample Image Used

June 20, 2022

IGI Report Number **LG534237576**

Description **LABORATORY GROWN DIAMOND**

Shape and Cutting Style **OVAL BRILLIANT**

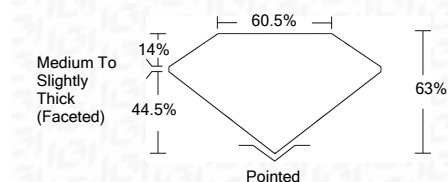
Measurements **10.67 X 7.60 X 4.79 MM**

GRADING RESULTS

Carat Weight **2.43 CARATS**

Color Grade **G**

Clarity Grade **VS 2**



ADDITIONAL GRADING INFORMATION

Polish **EXCELLENT**

Symmetry **EXCELLENT**

Fluorescence **NONE**

Inscription(s) **LABGROWN IGI LG534237576**

Comments: This Laboratory Grown Diamond was created by Chemical Vapor Deposition (CVD) growth process and may include post-growth treatment.
Type IIa

June 20, 2022

IGI Report Number **LG534237576**

Description **LABORATORY GROWN DIAMOND**

Shape and Cutting Style **OVAL BRILLIANT**

Measurements **10.67 X 7.60 X 4.79 MM**

GRADING RESULTS

Carat Weight **2.43 CARATS**

Color Grade **G**

Clarity Grade **VS 2**

ADDITIONAL GRADING INFORMATION

Polish **EXCELLENT**

Symmetry **EXCELLENT**

Fluorescence **NONE**

Inscription(s) **LABGROWN IGI LG534237576**

Comments: This Laboratory Grown Diamond was created by Chemical Vapor Deposition (CVD) growth process and may include post-growth treatment.
Type IIa



IGI Report No. LG534237576	2.43 CARATS	G
OVAL BRILLIANT	VS 2	63%
10.67 X 7.60 X 4.79 MM	60.5%	Medium To Slightly Thick (Faceted)
Carat Weight	Pointed	
Color Grade	EXCELLENT	
Clarity Grade	EXCELLENT	
Depth	EXCELLENT	
Table	NONE	
Girdle	LABGROWN IGI	
	LG534237576	
Culet		
Polish		
Symmetry		
Fluorescence		
Inscription(s)		
Comments:		

This Laboratory Grown Diamond was created by Chemical Vapor Deposition (CVD) growth process and may include post-growth treatment.
Type IIa

