



**ELECTRONIC COPY**

**LABORATORY GROWN DIAMOND REPORT**

July 5, 2022  
 IGI Report Number **LG536203417**  
 Description **LABORATORY GROWN  
DIAMOND**  
 Shape and Cutting Style **OVAL BRILLIANT**  
 Measurements **10.34 X 7.36 X 4.60 MM**

**GRADING RESULTS**

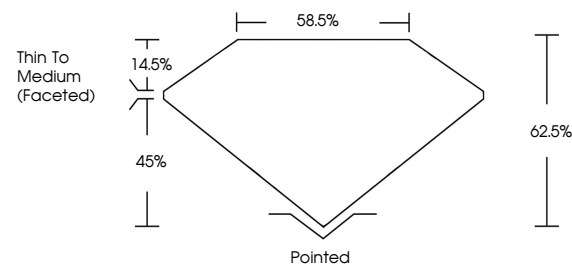
Carat Weight **2.13 CARATS**  
 Color Grade **E**  
 Clarity Grade **VS 1**

**ADDITIONAL GRADING INFORMATION**

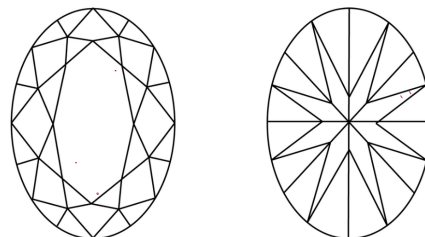
Polish **EXCELLENT**  
 Symmetry **EXCELLENT**  
 Fluorescence **NONE**  
 Inscription(s) **LABGROWN IGI LG536203417**  
 Comments: This Laboratory Grown Diamond was created by Chemical Vapor Deposition (CVD) growth process and may include post-growth treatment. Type IIa

LG536203417

**PROPORTIONS**



**CLARITY CHARACTERISTICS**



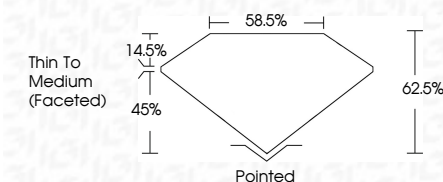
**KEY TO SYMBOLS**

Red symbols indicate internal characteristics.  
 Green symbols indicate external characteristics.

**GRADING SCALES**

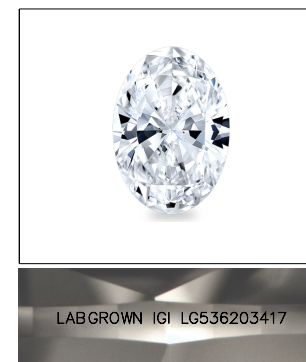
|                             |                              |                             |                        |                   |           |   |
|-----------------------------|------------------------------|-----------------------------|------------------------|-------------------|-----------|---|
| COLOR GRADING SCALE         | CL                           | NC                          | FT                     | VLT               | LT        |   |
|                             | COLORLESS D-F                | NEAR COLORLESS G-J          | FAINT K-M              | VERY LIGHT N-R    | LIGHT S-Z |   |
| CLARITY (10x) GRADING SCALE | FL                           | IF                          | VVS                    | VS                | SI        | I |
|                             | FLAWLESS INTERNALLY FLAWLESS | VERY VERY SLIGHTLY INCLUDED | VERY SLIGHTLY INCLUDED | SLIGHTLY INCLUDED | INCLUDED  |   |

July 5, 2022  
 IGI Report Number **LG536203417**  
 Description **LABORATORY GROWN  
DIAMOND**  
 Shape and Cutting Style **OVAL BRILLIANT**  
 Measurements **10.34 X 7.36 X 4.60 MM**  
**GRADING RESULTS**  
 Carat Weight **2.13 CARATS**  
 Color Grade **E**  
 Clarity Grade **VS 1**



**ADDITIONAL GRADING INFORMATION**

Polish **EXCELLENT**  
 Symmetry **EXCELLENT**  
 Fluorescence **NONE**  
 Inscription(s) **LABGROWN IGI LG536203417**  
 Comments: This Laboratory Grown Diamond was created by Chemical Vapor Deposition (CVD) growth process and may include post-growth treatment. Type IIa



LABGROWN IGI LG536203417

**LASERSCRIBE<sup>SM</sup>**

Sample Image Used



|              |                           |              |             |             |   |               |      |       |       |       |       |                          |         |        |           |          |           |              |      |                |                          |           |  |
|--------------|---------------------------|--------------|-------------|-------------|---|---------------|------|-------|-------|-------|-------|--------------------------|---------|--------|-----------|----------|-----------|--------------|------|----------------|--------------------------|-----------|--|
| July 5, 2022 | IGI Report No LG536203417 | Carat Weight | 2.13 CARATS | Color Grade | E | Clarity Grade | VS 1 | Depth | 62.5% | Table | 58.5% | Thin To Medium (Faceted) | Pointed | Polish | EXCELLENT | Symmetry | EXCELLENT | Fluorescence | NONE | Inscription(s) | LABGROWN IGI LG536203417 | Comments: |  |
|--------------|---------------------------|--------------|-------------|-------------|---|---------------|------|-------|-------|-------|-------|--------------------------|---------|--------|-----------|----------|-----------|--------------|------|----------------|--------------------------|-----------|--|

The Laboratory Grown Diamond was created by Chemical Vapor Deposition (CVD) growth process and may include post-growth treatment. Type IIa