



ELECTRONIC COPY

LABORATORY GROWN DIAMOND REPORT

July 12, 2022	
IGI Report Number	LG537217156
Description	LABORATORY GROWN DIAMOND
Shape and Cutting Style	OVAL BRILLIANT
Measurements	11.13 X 7.89 X 4.89 MM

GRADING RESULTS

Carat Weight	2.63 CARATS
Color Grade	F
Clarity Grade	VVS 2

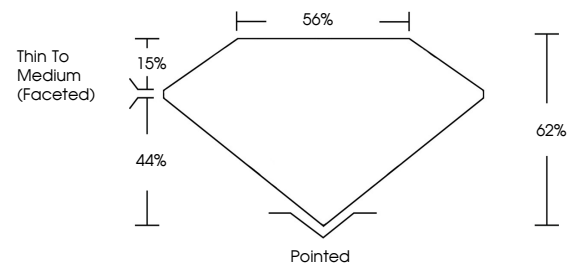
ADDITIONAL GRADING INFORMATION

Polish	EXCELLENT
Symmetry	EXCELLENT
Fluorescence	NONE

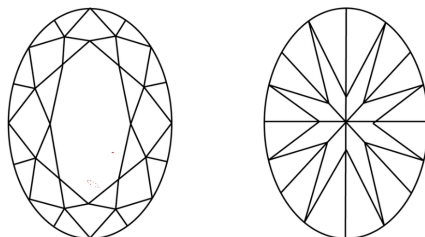
Inscription(s) **LABGROWN IGI LG537217156**
 Comments: As Grown - No indication of post-growth treatment.
 This Laboratory Grown Diamond was created by Chemical Vapor Deposition (CVD) growth process.
 Type IIa

LG537217156

PROPORTIONS



CLARITY CHARACTERISTICS

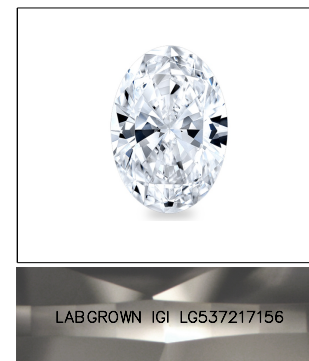


KEY TO SYMBOLS

Red symbols indicate internal characteristics.
Green symbols indicate external characteristics.

GRADING SCALES

COLOR GRADING SCALE	CL		NC		FT		VLT		LT	
	COLORLESS D-F		NEAR COLORLESS G-J		FAINT K-M		VERY LIGHT N-R		LIGHT S-Z	
CLARITY (10x) GRADING SCALE	FL IF		VVS		VS		SI		I	
	FLAWLESS INTERNALLY FLAWLESS		VERY VERY SLIGHTLY INCLUDED		VERY SLIGHTLY INCLUDED		SLIGHTLY INCLUDED		INCLUDED	

LASERSCRIBESM

Sample Image Used



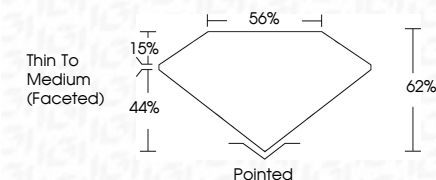
© IGI 2020, International Gemological Institute

FD - 10 20

www.igi.org

LABORATORY GROWN DIAMOND REPORT

July 12, 2022	
IGI Report Number	LG537217156
Description	LABORATORY GROWN DIAMOND
Shape and Cutting Style	OVAL BRILLIANT
Measurements	11.13 X 7.89 X 4.89 MM
GRADING RESULTS	
Carat Weight	2.63 CARATS
Color Grade	F
Clarity Grade	VVS 2



ADDITIONAL GRADING INFORMATION

Polish	EXCELLENT
Symmetry	EXCELLENT
Fluorescence	NONE
Inscription(s)	LABGROWN IGI LG537217156
Comments: As Grown - No indication of post-growth treatment.	
This Laboratory Grown Diamond was created by Chemical Vapor Deposition (CVD) growth process.	
Type IIa	



July 12, 2022	As Group - No indication of post-growth treatment.
© Report No. GS37217155	The Laboratory Grown Diamond was created by Chemical Vapor Deposition (CVD) growth process.
DVAL BELGIANT	
1.13 X 7.89 X 4.89 MM	
Carat Weight	2.63 CARATS
Color Grade	F
Clarity Grade	VS 2
Depth	62%
Table	56%
Grade	Thin To Medium (rounded)
Culet	Pointed
Polish	EXCELLENT
Symmetry	EXCELLENT
Fluorescence	NONE
Inscription(s)	LABGROWN ISI
Comments:	GS37217155

As Grown - No Indication of post-growth treatment.