



**ELECTRONIC COPY**

## LABORATORY GROWN DIAMOND REPORT

July 14, 2022	
IGI Report Number	LG537234058
Description	LABORATORY GROWN DIAMOND
Shape and Cutting Style	CUT CORNERED RECTANGULAR MODIFIED BRILLIANT
Measurements	8.06 X 5.74 X 3.64 MM

## GRADING RESULTS

Carat Weight	1.44 CARAT
Color Grade	E
Clarity Grade	VVS 2

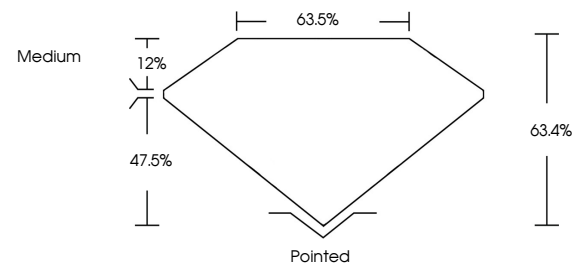
### ADDITIONAL GRADING INFORMATION

Polish	EXCELLENT
Symmetry	EXCELLENT
Fluorescence	NONE

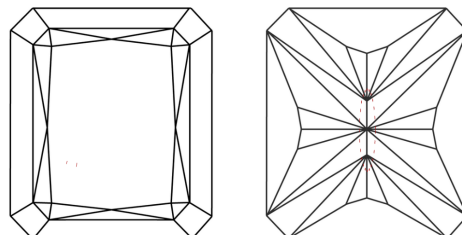
Inscription(s) **LABGROWN IGI LG537234058**  
 Comments: As Grown - No indication of post-growth treatment.  
 This Laboratory Grown Diamond was created by Chemical Vapor Deposition (CVD) growth process.  
 Type IIa

LG537234058

## PROPORTIONS



## CLARITY CHARACTERISTICS

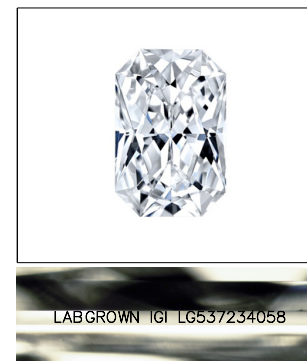


## KEY TO SYMBOLS

Red symbols indicate internal characteristics.  
Green symbols indicate external characteristics.

## GRADING SCALES

COLOR GRADING SCALE	CL		NC		FT		VLT		LT	
	COLORLESS D-F		NEAR COLORLESS G-J		FAINT K-M		VERY LIGHT N-R		LIGHT S-Z	
CLARITY (10x) GRADING SCALE	FL IF		VVS		VS		SI		I	
	FLAWLESS INTERNALLY FLAWLESS		VERY VERY SLIGHTLY INCLUDED		VERY SLIGHTLY INCLUDED		SLIGHTLY INCLUDED		INCLUDED	

LASERSCRIBE<sup>SM</sup>

Sample Image Used



© IGI 2020, International Gemological Institute

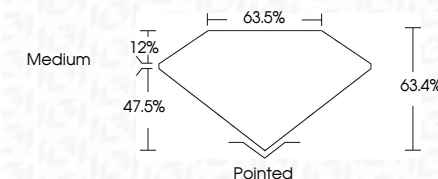
FD - 10 20

www.igi.org

## LABORATORY GROWN DIAMOND REPORT

July 14, 2022	
IGI Report Number	LG537234058
Description	LABORATORY GROWN DIAMOND
Shape and Cutting Style	CUT CORNERED RECTANGULAR MODIFIED BRILLIANT
Measurements	8.06 X 5.74 X 3.64 MM

GRADING RESULTS	
Carat Weight	1.44 CARAT
Color Grade	E
Clarity Grade	VVS 2



### ADDITIONAL GRADING INFORMATION

Polish	EXCELLENT
Symmetry	EXCELLENT
Fluorescence	NONE
Inscription(s)	LABGROWN IGI LG537234058

Inscription(s) LABGROWN IGI LG537234058

Comments: As Grown - No indication of post-growth treatment.  
This Laboratory Grown Diamond was created by Chemical Vapor Deposition (CVD) growth process.  
Type IIa

[illegible]

As Grown - No Indication of post-growth treatment.